



S-Flex door allows Hand Operation without winches.



Both models open without obstructions and are available in variety of exterior materials.



Flex Barn End Door System

Choose from either the V-Flex top opening or S-Flex side opening doors:

- Welded steel frame
- "Quad Wrap" dead air space insulation
- Weighs approximately 200 lbs.
- Rubber seal assures tight fit, tightness increases as fans come on.
- Includes hinges and 6" spring latch closure

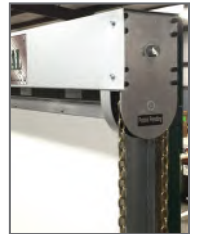
#D-SFLEZ-CUST 12' x 9' open to the side Metal door



STURDY SEAL[™] BY EAGAN MANUFACTURING, INC.

Eagan Bi-Fold End Door

- Significant energy cost savings.
- Excellent sealing capability.
- Polyurethane foam injected door panels with an R-7 insulation value.
- Door comes complete with all necessary hardware.
- Skin on the back side of the door is black to aid in room darkening.
- Quality product that will last for many years to come.
- Very easy to operate.



*Available in 10', 12' and 14' widths



Hired-Hand Automated RollSeal Door System RS-300

Features Include:

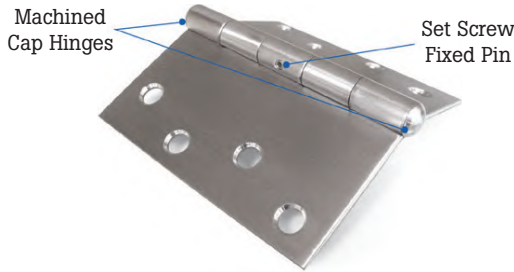
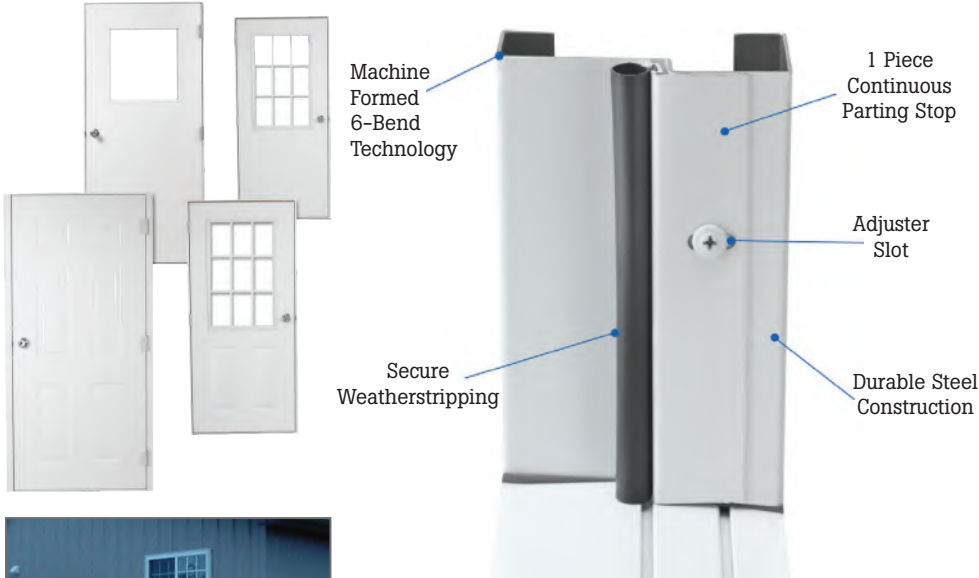
- Standard sizes up to 13' wide and 14' tall
- Aluminum tracks and covers
- RollSeal patented seal system, 3 ply fabric, double seal with dead air space for good thermal insulation
- Excellent seal for pressurization applications
- Additional switches and opening devices
- Remote transmitter/receiver option
- Three operators to choose from:
 - Manual chain hoist operator
 - Tube motor operator
 - Manaras opera continuous duty operator
- Fabric and window options

- #H6621-6107 Roll Seal Door Complete 12' W x 10' H
- #H6421-6024 Roll Seal 300 Track Right Assy 10'
- #H6421-6025 Roll Seal 300 Track Left Assy 10'
- #H6450-3502 Velcro Complete Kit For RS-300 Roll Seal 10'
- #H6421-9304 Roll Seal Panel RS-300 400 F Velcro 10' Right
- #H6421-9305 Roll Seal Panel RS-300 400 F Velcro 10' Left



A Hog Slat exclusive, the Barngard Door™ series has proven to deliver value beyond what is available in the marketplace.

The advanced technology and flexible platform of the Barngard Door™ series continues to deliver value. Featuring adjustable weatherstrips, header sweep and sill sweep. The precision folded jambs, baked bright white finish, 4" x 4-1/2" hinges and the industry's best warranty are sure to make this door an industry standard for years to come.



- #BG882668 Door Complete Barngard R88 2'6" x 6'8"
- #BG882868 Door Complete Barngard R88 2'8" x 6'8"
- #BG883068 Door Complete Unit Barngard R88 3'0" x 6'8"
- #BG882668W Door Complete Barngard R88 2'6" x 6'8" Steel W/22" x 22"
- #BG883068W Door Complete Barngard R88 3'0" x 6'8" W/22" x 22" Lite
- #BG884068 Door Complete Barngard R88 4'0" x 6'8"
- #BG886068 Door Complete Barngard R88 Double Door 6'0" x 6'8"



Barn Door

Specialty door designed to handle the extreme conditions of the confinement buildings. Insulated foam core is framed with dimensional lumber and both sides covered with a aluminum skin laminated to 3/8" plywood. The edges are capped with a rugged PVC U-channel. Doors are pre-hung with (3) 8" strap hinges on to the 2' x 4' frame and fully weather-stripped. Door slab comes pre-drilled for installation of the Dura Latch.

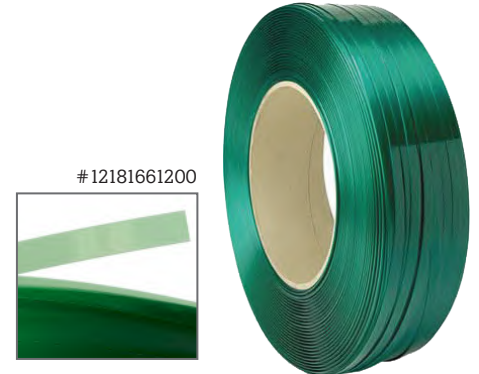
Now with stainless steel strap hinges.

- #2668LSS 30" Left barn door
- #2668RSS 30" Right barn door
- #3668LSS 36" Left barn door
- #3668RSS 36" Right barn door
- #MMS3668KI Barn door trim kit
- #1043 8" tee hinge w/ removable pin



Tri-Ply

- #844190 52" x 600' roll



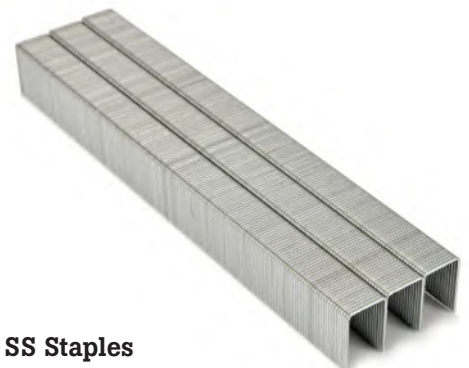
Green Tri-Ply Strapping

- #12181661200 1/2" x .018" x 12000', green
- #844191 1/2" x .026" x 8200', white



Tri-Ply Tape

- #844192 4" x 165' white
- #844193 4" x 165' black



SS Staples

- Box of 5000
- #844194 1" crown x 1" leg



Barn Door Trolley Parts

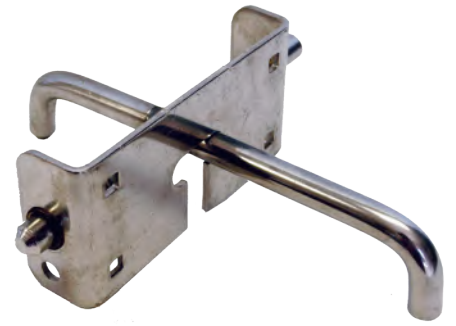
- #712100 Round Rail Barn Door Track 12
- #712101 ... Wheel Kit for Round Rail Track (sold per pair)



Barn Door Latch

Rugged, simple latching D-style door latch. Adjusts from 1/2" to 2" door slab. Galvanized steel construction with hardware. Great latch for any door or gate. Can be padlocked through handle. Weight: 1.2 lbs.

- #806221 Whitcomb 1/2" to 2" door slab
- #20700027 Latch 3/4" to 2-1/4" door slab



Stainless Steel Door Latch

The only completely stainless steel barn latch complete with SS hardware. Spring loaded plunger style latch that installs easily to any style door or gate. Fits up to a 2" door slab. Weight: 2.5 lbs.

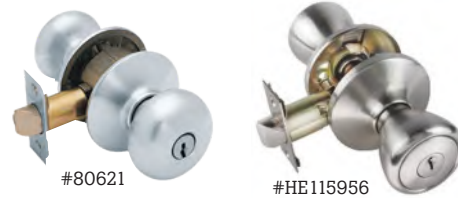
- #8000601501 Stainless Steel Door Latch



Tuff Latch

This massive built latch is the most dependable barn door latch on the market. Designed specifically for use in confinement buildings and recommended for use with our Barn Door. Electroplate finish that features 6x6 mounting plate and 3/8" thick striker arm. Includes mounting hardware and will fit up to 2" thick door slab. Weight: 6.5 lbs.

- #001760 Tuff Latch



#80621

#HE115956



#HE803203

#606210

Entry Door Locksets

- #80621Schlage keyed entry lock set
- #606210 Schlage passage set, no lock
- #HE115956 Steel Harbor Economy Grade Satin Nickel
- #HE803203 ... Kwikset Lockset Keyed Entry Satin Chrome



Universal Door & Gate Latch

- #HE873013 Universal Door/Gate Latch \$5.28



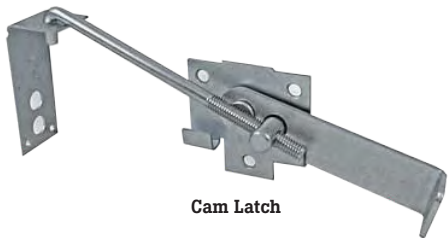
Safety Gate Latch Hook

Heavy-duty, self-locking latch prevents livestock from opening doors and gates. 6" long. plated galvanized finish.

- #V2120 Safety Gate Latch Hook



Jam Latch



Cam Latch

Cam & Jam Latch

Dual purpose latch used to secure sliding doors. Durable galvanized finish with over-center cam style locking action.

- #P188000 Cam & Jam Latch



HOG SLAT®

METAL ROOF AND WALL SYSTEMS

Versatile, durable and affordable roofing systems.



Choose your color!

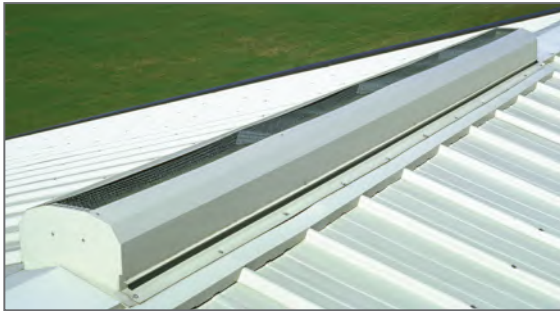




High Profile Ridge Vents

Lock formed 26 ga steel in either white or galvanized finish. Bird screened with 1/2" galvanized hardware cloth. Stack height is 13-1/2" above ridge line. 9" throat allows 3 sq. ft. of free opening for the 4' and 7.5' for the 10' models.

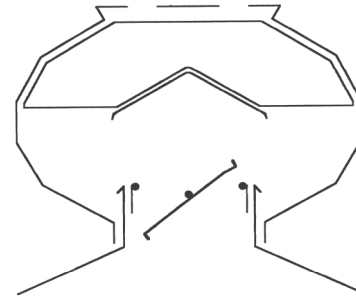
- #K50300GALV.....4' high profile ridge vent, galv., 30 lbs
- #K50300P.....4' high profile ridge vent, white, 30 lbs
- #RV-900.....10' high profile ridge vent, galv., 78 lbs
- #RV-900W.....10' high profile ridge vent, white, 78 lbs



Low Profile Ridge Vents 10'

Fully hemmed and formed 26 ga. steel in either painted or galvanized finish. Only extends 3" above the ridge line. Features 3-3/4" nailing flange for an overall width of 16".

- #RV35.....10' low profile ridge vent, galv
- #K50020-WH20.....10' low profile ridge vent, painted



High Profile Ridge Vents with Damper

Same basic construction as the high profile model with the addition of air flow regulating damper in the 9" throat. Use as exhaust vents on naturally ventilated buildings. Free opening is 3 sq ft. for the 4' model and 6 sq. ft. for the 8' model.

- #K50310-WH20.....4' Ridge vent w/ damper, 33 lbs
- #RV800D.....8' Ridge vent w/ damper, 60 lbs



Poly Intake / Exhaust Vent

One-piece construction of rugged polyethylene with UV inhibitors, this ridge vent will not rust when used to exhaust warm, moist air in the confinement buildings. Stands 24" high, 36" wide and 48" long. Rated at 3000 cfm exhaust and includes bird screen.

- #SRV-3000.....Poly Ridge Vent



Save on LP costs with TempShield!

Insulate your curtains and reduce heat loss! TempShield turns a regular vinyl curtain into an insulated curtain!

Item#	Layer Configuration	Roll Size	Usage Suggestions
#MWDBDF3X125	Foil-Bubble-Bubble-Foil	3'x125'	Curtain/Side wall
#MWDBDF3X200	Foil-Bubble-Bubble-Foil	3'x200'	Curtain/Side wall
#MWDBDF4X125	Foil-Bubble-Bubble-Foil	4'x125'	Curtain/Side wall
#MWDBDF4X200	Foil-Bubble-Bubble-Foil	4'x 200'	Curtain/Side wall
#MWDBDF5X125	Foil-Bubble-Bubble-Foil	5'x125'	Curtain/Side wall
#MWDBDF5X200	Foil-Bubble-Bubble-Foil	5'x200'	Curtain/Side wall
#MWDBDF6X125	Foil-Bubble-Bubble-Foil	6'x125'	Curtain/Side wall
#MWDBDF6X200	Foil-Bubble-Bubble-Foil	6'x200'	Curtain/Side wall
#MWDBDF8X125	Foil-Bubble-Bubble-Foil	8'x125'	Curtain/Side wall
#MWDBWF3x125	Foil-Bubble-Bubble-W poly	3'x125'	Curtain/Side wall
#MWDBWF3x200	Foil-Bubble-Bubble-W poly	3'x200'	Curtain/Side wall
#MWDBWF4x125	Foil-Bubble-Bubble-W poly	4'x125'	Curtain/Side wall
#MWDBWF4x200	Foil-Bubble-Bubble-W poly	4'x200'	Curtain/Side wall
#MWDBWF5x125	Foil-Bubble-Bubble-W poly	5'x125'	Curtain/Side wall
#MWDBWF5x200	Foil-Bubble-Bubble-W poly	5'x200'	Curtain/Side wall
#MWDBWF6X200	Foil-Bubble-Bubble-W poly	6'x200'	Cool Cell/Fan
#MWDBWF8x125	Foil-Bubble-Bubble-W poly	8'x125'	Curtain/Side wall
#MWSBDF6x125	Foil-Bubble-Foil	6'x125'	Curtain/Side wall
#MWSBDF7x125	Foil-Bubble-Foil	7'x125'	Curtain/Side wall
#MWSBDF7x200	Foil-Bubble-Foil	7'x200'	Curtain/Side wall
#MWSBWF6x125	Foil-Bubble-W Poly	6'x125'	Curtain/Side wall
#MWSBWF6x200	Foil-Bubble-W Poly	6'x200'	Curtain/Side wall

Handi-Foam

PROFESSIONAL POLYURETHANE FOAM SYSTEM SAVES ENERGY!



Handi-Foam Tank with Gun

- #KT103304..... 10 lb. Tank w/ Gun
- #TS103305..... 16 lb. Tank w/ Gun

- Fills holes and blocks access of insects and rodents
- Bonds to wood, metal, concrete and is paintable
- Comes with 9' hose, 1/4" brass nozzle and wand
- Tack free in approximately 10 minutes
- Can be trimmed in 1 hour with a full cure in 24 hours



Dispensing Gun

- #F61039..... 7" Dispensing Gun



Gun & Hose Kit

- #TS103306..... Gun & Hose Kit only (no tank)



Multi-Purpose Cleaner

- #P10083..... 12 oz. Cleaner



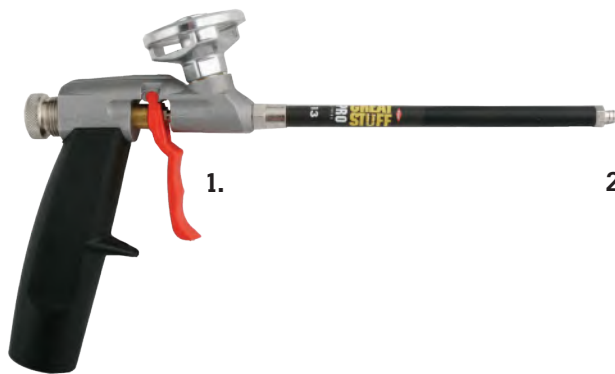
Handi-Foam - Black

- #P30251..... 24 oz. can (no gun)
- #P30295..... 29 oz. can (no gun)



Handi-Foam with Straw

- #P30053..... 12 oz. can - black w/ straw



EnerFoam Professional Gun Foam System

- Replaces up to 40 quart tubes of traditional caulk or adhesive.
- Fast curing. Foam can be trimmed in less than one hour. Initial skin time is less than six minutes! Faster than any other foam
- Unique mechanical valve. Spring loaded for reuse. Won't glue shut after use.
- Contains no solvents. Compatible with EPS foamboard.

- 1) #KENER13..... Gun PRO13 for spray foam
- 2) #KDOW192268..... Cleaner for gun (KENER13)
- 3) #KENER43..... Foam spray black, 20 oz. bottle



Ag-Tite Black Foam Insulation

- with Hose and Gun

- #043669..... Ag Tite Canister



Touch N Foam Insulation

- 12 oz. aerosol
- Triple expanding polyurethane foam
- Seals & insulates block and concrete
- For interior/exterior use

- #77282..... 12 oz. can
- #09223330..... 8 oz. can



PPD Panel

- 4' x 8' x 3/8" thick Fir plywood
- .040 High Density Polyethylene sheet laminated one side
- Use in non-contact animal areas
- Wt. 38 lbs.

#84574 4' x 8' plywood w/ .040 HDPE



FRP Panel

- 4' x 8' x 3/8" thick Fir plywood
- .050 textured fiberglass sheet laminated one side
- Use in animal contact area
- Wt. 41 lbs.

#84571 4' x 8' plywood w/ .050 FRP



Extruded Plastic Sheets

High Density Polyethylene sheets are the perfect choice whenever smooth, slick surfaces are desired. Can be sawed and nailed like wood and are waterproof and chemical resistant. Use the 1/8" thickness over existing plywood surfaces. 1/4" thickness and above can fastened directly to stud walls.

- #1038 4' x 8' x 1/8", 21 lbs
- #1034 4' x 8' x 1/4", 42 lbs
- #1035 4' x 10' x 1/4", 52 lbs
- #1036 4' x 8' x 3/8", 62 lbs
- #1037 4' x 8' x 1/2", 82 lbs

Corrugated PVC Liner

Durable, strong PVC sheets are excellent choice for lining the interior of confinement structures. These rust proof sheets are able to span 4' centers and still support ceiling insulation. See special one-stepper screws for fastening (Item# 805171).



- #HSC-338146 38" x 146"
- #HSC-338196 38" x 196"
- #HSC-338244 38" x 244"



Batten Strips

The most effective type of covering for sealing and preventing damage to the seams between wall panels. Animals can't work them loose and damage panels. Predrilled holes for easy installation.

#84588 8' x 1-3/4" aluminum



Nylon Drive Rivet

For fastening interior wall panels. Priced each.

#84576 1/4" x 1-1/2"



Grip-Rite® PrimeGuard Coated Deck Screw

- Star T Drive
- Type 17 point
- Coarse thread
- Approx. pound/count shown

- #805611 #8 x 2" long, 1 lb. 126 ct
- #805615 #8 x 2" long, 5 lb. 126 ct
- #805631 #9 x 2-1/2" long, 1 lb. 87 ct
- #805635 #9 x 2-1/2" long, 5 lb. 87 ct
- #805621 #9 x 3" long, 1 lb. 73 ct
- #805625 #9 x 3" long, 5 lb. 73 ct
- #805641 #10 x 3-1/2" long, 1 lb. 56 ct
- #805645 #10 x 3-1/2" long, 1 lb. 56 ct
- #805646 #10 x 4" long, 5 lb. 50 ct

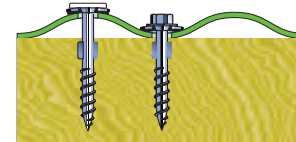


Stainless Steel Star Drive Screws

Flat head for flush finish. Use for fastening interior sheets. Priced each. Sold in 100 piece bags.

- #1030-1 #8 x 1-1/2"
- #1031-1 #10 x 2-1/2"
- #1032-1 #8 x 1-1/4"
- #1033-1 #9 x 2" Phillips Drive

PVC AND POLYCARBONATE PANELS



"One-Stepper" Screws

Self tapping, hex head with washer screws feature "wings" that drill out a larger hole to allow for expansion. Preferred fastener for installing corrugated PVC sheeting. Priced each.

- #805171 #12 x 1-1/4" S.S
- #ONESTEPPERS #12 x 1-3/4" Galv



Metal Screws

- #80501 Galv. #9 x 1"
- #80502 Galv. #10 x 1-1/2"
- #80503 Galv. #9 x 2"
- #80504 White #9 x 1"
- #80517 White #9 x 1-1/2"
- #MMS80506 White #10 x 2"

Stainless Steel Ring Shank Nails

For fastening interior wall panels. 136 nails per pound. Sold as 1 lb. quantities.

#1004040 10 ga x 1-3/4" 304 SS





GE Silicone

Contractor grade silicone sealant offers excellent adhesion and durability for general purpose caulking applications. Stays flexible over a wide range of temperature extremes. For exterior and interior use to seal wall panels and exterior metal sheeting. Not recommended to paint. Applies white and dries clear.

#003030White, 10.1 oz. cartridges



NP1

NP1 is a one-component flexible, polyurethane sealant for exterior and interior use. Can be used over a wide temperature range to seal cracks and seams. Can be used in high moisture areas. Available in white and gray.

#59500White, 10.1 oz. cartridges
 #59500GGray, 10.1 oz. cartridges
 #59500BBlack, 10 oz. cartridges



S-Hooks

#60672S-Hook Small 1" x .105"
 #60677S-Hook Medium 1-1/2" x .177"
 #HSH044 ...S-Hook for Brooder 1-7/8" x .192" Uneven
 #HSH045S-Hook Large 2-1/4" x .262"



Bolts

Stainless Steel Hex Bolts

#60686 1/4" x 1" ss
 #60619 1/4" x 1-1/2" ss
 #606871 1/4" x 2" ss
 #60506S 1/4" x 2-1/2" ss
 #606191 1/4" x 3" ss
 #605071S 1/4" x 3-1/2" ss
 #605073S 1/4" x 4-1/2" ss
 #605081 5/16" x 1/2" ss
 #605082 5/16" x 3/4" ss
 #605083 5/16" x 7/8" ss
 #606872 5/16" x 1" ss
 #605091 5/16" x 1-1/4" ss
 #60510S 5/16" x 1-1/2" ss
 #60511S 5/16" x 2" ss
 #60512S 5/16" x 2-1/2" ss
 #60513S 5/16" x 3" ss
 #60523S 5/16" x 3-1/2" ss
 #60689 5/16" x 4-1/2" ss
 #605141 3/8" x 3/4" ss
 #60617 3/8" x 1" ss
 #605161 3/8" x 1-1/4" ss
 #60610 3/8" x 1-1/2" ss
 #60631 3/8" x 2" ss
 #60519S 3/8" x 2-1/2" ss
 #60633 3/8" x 3" ss
 #606331 3/8" x 3-1/2" ss
 #605212S 3/8" x 4-1/2" ss
 #60534S 1/2" x 1" ss
 #60536S 1/2" x 1-1/2" ss
 #606874 1/2" x 2" ss
 #60538S 1/2" x 2-1/2" ss
 #60539S 1/2" x 3" ss
 #60540S 1/2" x 3-1/2" ss
 #60831 1/2" x 4-1/2" ss
 #60828 1/2" x 5-1/2" ss

Zinc Hex Bolts

#60502 1/4" x 1"
 #60504 1/4" x 1-1/2"
 #60505 1/4" x 2"
 #60506 1/4" x 2-1/2"
 #60507 1/4" x 3"
 #60592 1/4" x 3-1/2"
 #60594 1/4" x 4-1/2"
 #605071 5/16" x 1/2"
 #60508 5/16" x 3/4"
 #60509 5/16" x 1"
 #605092 5/16" x 1-1/4"
 #60510 5/16" x 1-1/2"
 #60511 5/16" x 2"
 #60512 5/16" x 2-1/2"
 #60513 5/16" x 3"
 #60523 5/16" x 3-1/2"
 #60562 5/16" x 4-1/2"
 #60514 3/8" x 3/4"
 #60515 3/8" x 1"
 #60516 3/8" x 1-1/4"
 #60517 3/8" x 1-1/2"
 #60518 3/8" x 2"
 #60519 3/8" x 2-1/2"
 #60520 3/8" x 3"
 #60521 3/8" x 3-1/2"
 #60825 3/8" x 4-1/2"
 #60534 1/2" x 1"
 #60535 1/2" x 1-1/4"
 #60536 1/2" x 1-1/2"
 #60537 1/2" x 2"
 #60538 1/2" x 2-1/2"
 #60539 1/2" x 3"
 #60540 1/2" x 3-1/2"
 #60542 1/2" x 4-1/2"
 #60550 1/2" x 5-1/2"

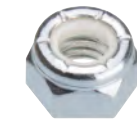


Stainless Steel Hex Nuts

#60602 1/4"
 #60618 5/16"
 #60606 3/8"
 #606061 1/2"

Zinc Hex Nuts

#60570 1/4"
 #60571 5/16"
 #60572 3/8"
 #60574 1/2"



Stainless Steel Lock Nuts

#60603 1/4"
 #60692 5/16"
 #60612 3/8"
 #60693 1/2"

Zinc Lock Nuts

#60680 1/4"
 #60681 5/16"
 #60682 3/8"
 #60683 1/2"



Stainless Steel Washers

#60579 1/4" - flat
 #605791 1/4" SS fender washer
 #60580 5/16" - flat
 #60583 1/2" - flat
 #60670 3/8" x 1-1/2" - flat fender-thick
 #60581S 3/8" x 1-1/2" - thin
 #60581 3/8" - flat



Stainless Steel Hinge

#103933" x 3" Stainless Steel Hinge



Stainless Steel Wedge Anchors

#606552	1/4" x 1-3/4" ss
#606625	1/4" x 2-1/4" ss
#HWSA-3823S	3/8" x 2-3/4" ss
#HWSA-3830S	3/8" x 3" ss
#606556	3/8" x 5" ss
#HWSA-1223S	1/2" x 2-3/4" ss
#606755	1/2" x 3-3/4" ss

Galvanized Steel Wedge Anchors

#60719	3/8" x 2-1/4"
#HWSA-3823	3/8" x 2-3/4"
#60722	3/8" x 3"
#60721	3/8" x 3-3/4"
#HWSA-3850	3/8" x 16 x 5"
#HSCPA-1223	1/2" x 2-3/4"
#90361	1/2" x 4-1/4"



Stainless Steel Lag Bolts

#607161	1/4" x 2"
#606873	5/16" x 2"
#606876	5/16" x 2-1/2"
#605131	5/16" x 3"
#605231	5/16" x 3-1/2"
#606431	3/8" x 2"
#605201	3/8" x 3"
#606441	3/8" x 3-1/2"

Galvanized Lag Bolts

#606427	5/16" x 2"
#60643	3/8" x 2"
#60645	3/8" x 2-1/2"
#606436	3/8" x 3"
#60644	3/8" x 3-1/2"



Stainless Steel J-Bolts

#607112	3/8" x 2-3/4"
#607091	3/8" x 3-3/8"
#607092	3/8" x 3-1/2"
#60710	3/8" x 4-3/8"
#60711	3/8" x 5-3/4"
#60712	3/8" x 6-1/4"
#60714	3/8" x 6-3/4"
#607113	3/8" x 6-7/8" - square
#607114	3/8" x 6-1/4" - square



Cable Clamps Stainless Steel

#617321	1/8"
#617331	3/16"
#82975	1/4"
#6173561	5/16"
#61735	3/8"

Cable Clamps Galvanized

#61732	1/8" - Hot Dipped
#61733	3/16" - Hot Dipped
#61734	1/4" - Hot Dipped
#617356	5/16" - Hot Dipped
#617351	3/8" - Hot Dipped



Galvanized U-Bolts

- Great for attaching pipes or tubes to gates or g-stalls

#60702	1" 1-3/8" x 5/16"
#60649	1" x 2-1/2" x 5/16"
#606501	2.73" x 3-1/2" x 5/16"
#60650	3" x 3-1/2" x 5/16"



Spring Snaps

#10385	5/16" Zinc
#10384	1/4" Zinc

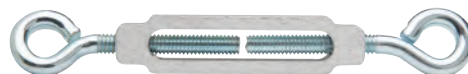


Stainless Steel Quick Link

#597082	3/16"
---------	-------

Galvanized Quick Link

#59708	3/16"
#597081	5/16"
#597080	1/4"



Aluminum Turnbuckle

#59712	5/16" x 6" - Closed Length
--------	----------------------------



Galvanized & Stainless Steel Cup Hooks

#HSH070	5/16" x 3-1/2"
#606655	1/4" x 3-3/4" SS
#60665	1/4" x 3-1/2"



#2/0 Straight Link

- Use for hanging waterers

#60676	#2/0 Straight Link
--------	--------------------



#1 Stainless Steel Chain

- For hanging feed systems
- 2' of length for every 4' auger length

#606733	#1 Stainless Steel Chain
---------	--------------------------



#2 Bowtie Weldless Chain

- Zinc
- Use for extra support for outside feed lines.

#60673	#2 Bowtie Weldless Chain
--------	--------------------------



#2/0 Bowtie Weldless Chain

- 100' only
- Zinc
- Use for hanging feed lines and high-pressure pipes

#60678	#2/0 Bowtie Weldless Chain
--------	----------------------------



K-Clamps

#HSH011	1/2"
#HSH012	3/4"
#HSH013	1"
#HSH015	2"
#HSH016	2-1/2"
#HSH017	3"
#5330031200	2" feed pipe clamp kit, for 1-1/2" upright, galvanized

Vanberg Metal Repair & Protection Products

Don't wait until replacement is needed! Save time and money by repairing and protecting now!

WMC-100 White Moisture Cure Urethane Coating

Improved single component formula requires no mixing; ideal for interior metal walls and ceilings.

CEILINGS



Before



After

#WMC100	1 qt
#WMC100-1	1 gal
#WMC100-5	5 gal

ROOFS



Before



After

WMC-100 Repair Kit

Complete starter kit with new "No Mix" formula for interior metal repair. Typical coverage: 50 sq. ft.

- Kit Includes:**
- 1-Qt WMC-100-Q
 - 1 Pint RUST CONVERTER
 - 4 Pieces SEAM TAPE
 - 1 BRUSH



#WMC100-K.....WMC-100 Repair Kit

AMC-100L Repair Kit

Complete kit for exterior small repairs of bins and metal roofs. Typical coverage: 50 sq. ft.

- Kit Includes:**
- 1-Qt AMC-100L-Q
 - 1 Pint RUST CONVERTER
 - 4 Pieces SEAM TAPE
 - 1 BRUSH



#AMC100L-K.....AMC-100 Repair Kit

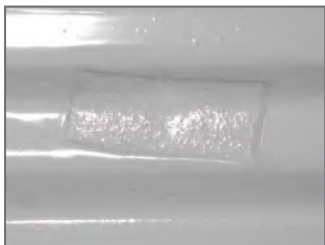
AMC-100L Aluminum Moisture Cure Urethane Coating

Formulated with 'Leafing' technology to improve bonding and create a tougher wearing 'metallic' coating. Exterior use.

ROOFS



Before



After

#AMC100L	1 qt
#AMC100L-1	1 gal
#AMC100L-5	5 gal

BINS



Before



After

VSC Rust Converter

Stops rust in its tracks preventing further corrosion and rusting on metal surfaces. A must before applying coatings. When applied, it chemically converts rust to a stable black compound.



#RC900.....	1 qt. (12/cs)
#RC900-1	1 gal. (4/cs)
#RC900-S	20 oz. spray can (12/cs)

VSC Seam Tape

Contouring, self-adhesive and high strength seam tape great for repairing holes, loose screw heads, splits and seam separations. Stops leaks as well. Excellent structural strength, superior adhesion and accepts VSC solvent based coatings.



#RC800-2 2" x 50' roll

4 STEPS TO SUCCESSFUL METAL COATINGS

Successful repair and protection is a result of attention to proper preparation techniques and the use of quality products designed to achieve long-lasting performance.



Step 1: Remove Loose Rust
Remove loose rust by pressure washing, scraper or brush.



Step 2: Convert Rust
Although abrasive blasting and mechanical rust removal are great methods, they are not always feasible. Experience shows that the treatment of rust is best achieved by VSC RUST CONVERTER.



Step 3: Patch
Holes, splits, seams and joints are covered with VSC SEAM TAPE, designed specifically for all weather conditions and are compatible with VSC coatings.



Step 4: Corrosion Resistance Coating
Apply the selected VSC coating to protect metal from corrosive compounds and weather.

Measure Containers

Measuring containers for proportioning mixes.



#TS1QM..... 1 qt
#TS5QM..... 5 qt

Pails & Lids

5 gal. pail used to mix and store materials. Spouted or plain lids available



#TS305..... 1 Pail
#TS305L..... 1 Plain Lid
#TS305PL..... 1 Spouted Pour Lid



1'-3' Pole Set

3 pieces assemble to 36" pole. Economy. Thread tip fits all roller frames.
#TSF0007-3..... 1'-3' pole set



9-inch Roller Cover

#TSR204-9..... 9", 1/2" nap



4-inch Roller Cover

#TSR204-4..... 4-inch, 1/2" nap



9-inch Roller Tray

Plastic tray resists solvents.
#TSR404..... 9-inch roller tray



9" Heavy Duty Frame

Fits threaded tip pole.
#TSF0010-9..... 9-inch HD frame



4" Heavy Duty Frame

Fits threaded tip pole.
#TSF0010-4..... 4-inch HD frame



3" Cut-In Brush

#TSF5117-3..... 3" cut-in brush

EPO-SET 400

Repair loose anchors in concrete without removing the stud. Simply apply EPO-SET 400 around the loose anchor and in 10 minutes anchor is set with full strength in two hours. Single tube with dual internal chambers allow EPO-SET 400 to be applied with a standard caulk gun. 9 oz. cartridge comes with one disposable mixing tip; additional tips should be ordered if entire tube content will not be applied in a single use. Application temperature 40° - 90°.



#72400..... EPO-400 Kit w/ mixing tube
#72400-T..... EPO-400 mixing tube



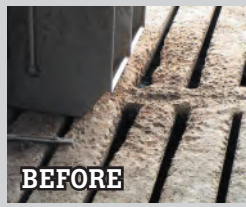
Set Bolts



Crack Repair

See It In Action!
YouTube: EPO-SET 400

Vanberg Concrete Repair & Protection Products



Typical Coverage at 1/4" (55 lb. bag)

- 25 sq. ft. unextended
- 1 cu. ft. mixed 1:1 with gravel (grouting over 1 inch)



Common Uses:

- Slats
- Troughs
- Floor overlays
- Feed Platforms
- Re-set penning
- Walls



'FAST' Trough Repair

Use CON-KORITE™ to restore troughs and stall pads – "Even during production"



Feeder Pad Repair



#KB0060



#KB0061



#KB0100 (Kit)



#KB0061

Con-Korite™ Xtra Mortar

Pure cement formula far outlasts common Portland products! CON-KORITE develops 3,000 psi compressive strength in one hour and nearly 10,000 psi in 28 days. It has exceptional abrasion resistance making it the longest lasting and most cost-effective option for severely worn (any thickness greater than 1/4 inch) slats and floors. It is preferred by producers for repair of broken slat edges and to restore corroded slats... even down to the rebar. Being a concentrate, CON-KORITE can be extended with aggregate up to 1:1 (or use GROUT) to grout deep holes and make repairs in medium duty areas such as troughs and rough pen floors (2 parts mortar to 1 part sand). Order separately for larger jobs.

- #KB0060.....CON-KORITE™ 55 lb. bag
- #KB0061.....CON-KORITE™ 55 lb. pail
- #KB0060B.....3,000 lb. bulk bag
- #KB0100.....60 lb. Kit: 55 lb. bag Mortar, 2-qts. KB25, 1-Set Control



**Rough Floors
Leveled
Fast!**

Con-Korite™ SSL

New self-leveling Con-Korite formulation provides easier application on uneven surfaces. Simply pour on repair area and spread, spike roll to finish. Kit includes bag of mortar and 1 gal of KB25. Excellent resistance to wear and corrosion. Approx. coverage 20 sq. at 1/4" thickness.

- #KB0040.....Con-Korite SSL kit



KB25 Acrylic Resin

Can be used for enhanced bond and resistance to absorption. KB25 is ideal for wet environments. General Use: 1 part KB25 to 2 parts water (1 gallon KB25 for 3 - 55lb. bags or pails of mortar).

- #KB0026.....1 gal. jug
- #KB0027.....5 gal. pail



ARMOR-STONE™ Epoxy Mortar

Many finishing sites have very high levels of corrosive compounds formed from pit gases, water types and feed additives. Over time even CON-KORITE™ can be affected. ARMOR-STONE™ has been shown to be unaffected by these corrosive compounds. A unique blend of ARMORCOAT epoxy and a special blend of aggregates that form a tough wearing and chemical resistant repair.

- #AC133-AG.....Armor-Stone™ Kit



**Economy
+
Performance!**

ECO-CRETE SLAT PATCH

Eco-Crete Slat Patch

A Hog Slat exclusive from Vanberg Coatings! Eco-Crete is the choice for routine repairs on slats and other concrete surfaces. Ready to use, just add water, place on damaged areas and it's set in just 2-3 hours. Features a high cure strength of 7,600 PSI. For interior and exterior use.

- #KB0051.....Eco-Crete 50 lb. pail

Armor-Rock™ 3800 Epoxy Overlay

A new formulation that is harder and more chemical resistant to withstand the most rigorous conditions.

Sooner or later slats and pads around feeders and mats are attacked by aggressive chemicals forming from pit gases, animal wastes and feed stuffs. ARMOR-ROCK™ is a well proven system to restore slightly worn concrete or protect "new" surfaces. VSC ARMORCOAT™ epoxy is combined with VSC aggregates to form an extremely tough-wearing and chemical-resistant non-slip overlay. Since 1989 producers have found the ARMOR-ROCK™ SYSTEM to be the most permanent solution. Wastes flow off the slats removing the corrosive compounds that erode the surface.



**AC 3800 LIQUIDS KIT IN A BOX/
AGGREGATES* IN A PAIL**
(*Includes AR ADMIX and
VSC MEDIUM G-DIAMOND)

#AC3800-AR.....Armor-Rock™ 3800 Kit

Download our FREE eBook

The Field Guide to Slat Repair and Replacement

Search in your browser for:
Slat Replacement -Hog Slat



It's a simple process too...



Mix 1.5 gal ARMORCOAT



add ADMIX



Pour on surface



SAND BROADCAST

Repair cracks permanently!



Cracked Slats



ARMOR-ROCK poured



Cracks repaired



Components

- #AC3800.....ARMORCOAT 3800 - Highest Chemical & Wear Resistance, (1.4 Gal.)
- #520B-32..... ARMOR-ROCK ADMIX (32 lb. bag)
- #82900-35N.....G-Diamond Aggregate 35 lb. Bag
- #150415..... 3 qt. Plastic Scoop (for dispensing Armor-Rock on Slats)

Concrete Clean & Etch

Aggressive Formula cleans and etches concrete floors to create a "hold tight" textured surface improving adhesive qualities of sealers and coatings. Removes laitance from new concrete and neutralizes alkali and soap residue. Dissolves scale and lime deposits from pipes and equipment. COVERAGE: 150 sq. ft./gallon. Concentrated for economy. Safer than muriatic acid



- #VP-151-1..... 1 gal
- #VP-151-5..... 5 gal

Portable Pail Mixer

Portable, fixed angle pail mixer for easy, thorough, consistent blending of mortars and epoxies. Durable, all-steel construction and professional grade, electric motor sustain high performance, continuous operation.



- #TSKM5825.....Unit w/prop for Epoxy mortars
- #TSKR.....Standard Prop Replacement
- #TSKMR1.....CON-KORITE™ paddle

4" Prop Mixer

Heavy duty, but economical prop designed for thorough mixing of epoxies, urethanes and mortars. Use with 1/2", variable speed, electric drill.



- #TS46565..... Prop Mixer

Solvent 101

This multi-purpose thinner and clean-up solvent for epoxies. SOLVENT 101 (1 Gal) can be shipped via UPS.



- #VPC-101-1..... 1 gal. (4/CS)
- #VPC-101-5..... 5 gal

ARMORCOAT™ SUPRA

High Strength, Professional Grade Waterborne Epoxy



- Water Based
- Long Lasting



- Chemically Resistant
- Stain Resistant



- Hot Tire Resistant
- Soap & Water Cleanup



- Commercial
- Showrooms
- Pharmaceutical

- Service Centers
- Shops/Garages
- Warehouses

- Manufacturing
- Agricultural

The Coating that "BREATHES".

ARMORCOAT SUPRA

ARMORCOAT SUPRA water-based chemistry forms a unique coating that allows moisture vapor to pass through. Unlike other coatings, ARMORCOAT SUPRA resists blistering, chipping and peeling due to moisture pressure. ARMORCOAT SUPRA is a unique blend of high solids pigmented epoxy that offers excellent adhesion and abrasion resistance. It outperforms and outlasts most solvent-based sealer systems without the associated odors, flammability, or VOC's. Recommended coverage is 320 sq. ft. per 1 gallon kit.

Kit Includes:

- ArmorCoat SUPRA Part "A"
- ArmorCoat SUPRA Part "B"
- Color Flakes
- Cleaner/Degreaser
- Non-Skid Additive
- Stir Stick
- Application Guide

#AC5361G-K ArmorCoat SUPRA Partial Flake Kit



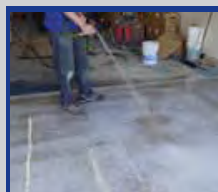
See tools
to apply
Page 240

EPO-KOTE

An optional high gloss clear top coat for added stain & scratch resistance.

#ES046 EPO-KOTE (1 gallon)

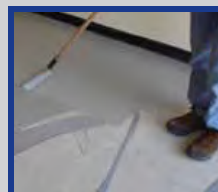
5 SIMPLE STEPS:



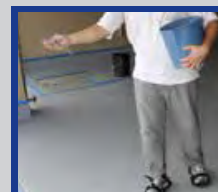
1. Clean surface



2. Mix components



3. Use roller to apply



4. Broadcast flakes (Optional)



5. Apply clear coat (Optional)

EPO-KOTE Clear Top Coat (sold separately) provides an even tougher, glossy finish for ARMORCOAT SUPRA floors. Application is recommended for COLOR FLAKE floors in high traffic areas. EPO-KOTE should be applied with a 1/4" (6.4 mm) roller. It may be re-applied to maintain high gloss finish.