

GrowerSELECT[®] Ceiling Inlet 3000-Bifold Mechanical Actuation #HSIN3000C



Airflow Performance Data (CFM)

Opening Width (In)	Static Pressure (In, H ₂ O)			
	0.05	0.1	0.15	0.2
1	300	650	950	1150
2	700	1600	2150	2500
5	1700	2850	3700	4400
8	2800	4200	5250	6050
9	2850	4550	5750	6750
11	3200	4950	6300	7350



Latch Mount and Cable Guide



Side mounted latch does not get blocked while opening by ceiling obstructions. Latch shuts the inlet tightly and securely. Combination piece also serves as a guide for the rope that helps open/close the inlet.



High-Strength, Low-Stretch Rope

Premium strength Lift-All treated poly rope with a Vectran core minimizes stretching rope.

Side Entry Cleat

Allows for fast and easy adjustment of the rope. Cleat retains the rope securely when adjustment is not necessary.



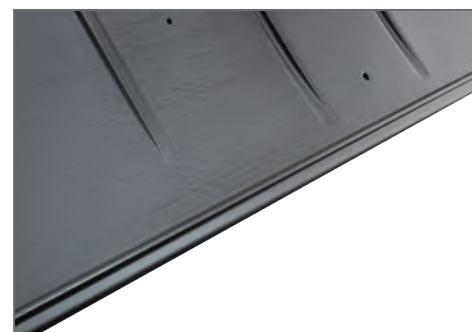
Two Eye Bolts

Easily mount the inlet to the ceiling in either orientation.



Center Seal

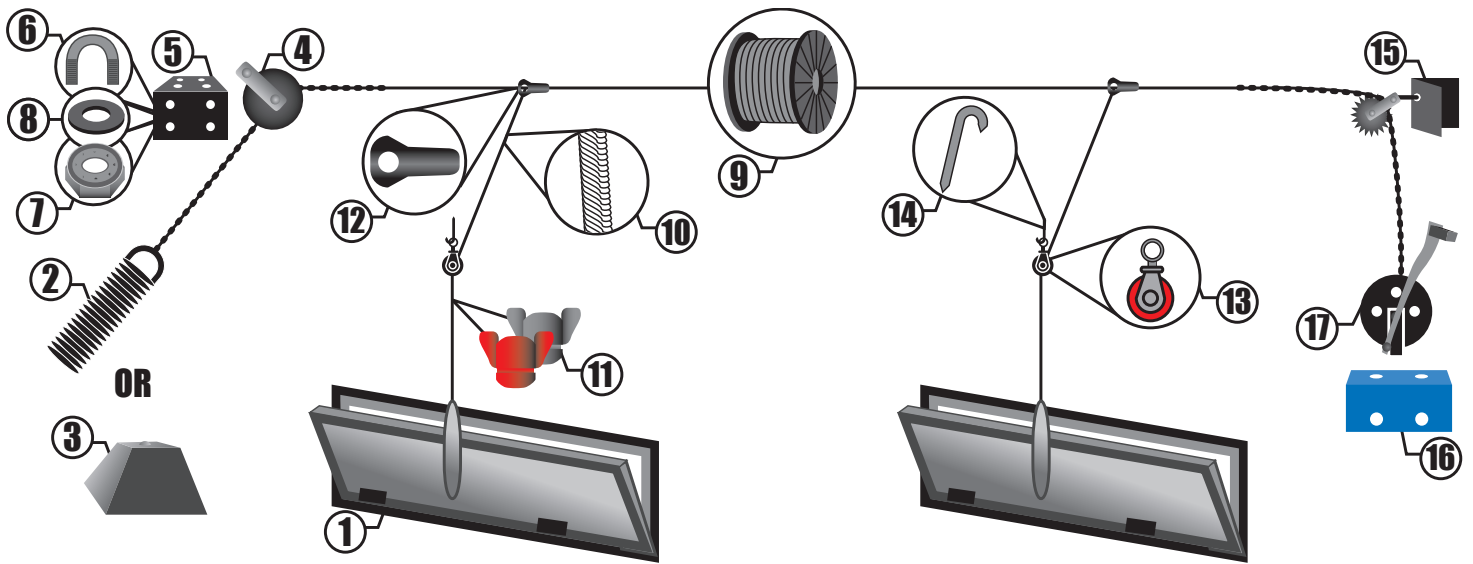
EDPM P-Seal minimizes cold air leakage in the center of the inlet.



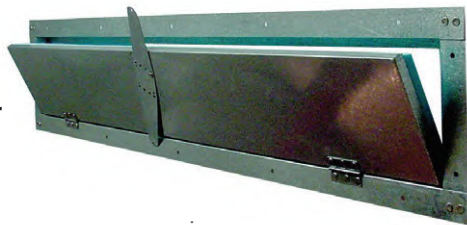
Exterior Seal

Matching tongue and groove on door and frame eliminates gaps when inlets closes.





1. Galvanized Vent Door
Many sizes available!



2. Spring
#59709361800 140 lb. tension



3. Counter Weight
• 25 pound
#NC61752^sCounter Weight



4. Needle Bearing Pulley
• 3.5 inch
#HSH001 Needle Bearing Pulley



5. 3" x 3" Pulley Bracket
#61745 Pulley Bracket



6. 5/16" U-bolt
#60649 U-Bolt



7. 5/16" Nylock
#60681 Nylock



8. 5/16" Washer
#60580 Washer



9. 1/8" Galvanized Cable
#61726^sGalvanized Cable



10. 1/8" Polyester Cord
#61724 1000' roll



11. Plastic Curtain Nut
*color may vary
#HSH032 1/8"
#HSH027 3/16"



12. 1/8" Stacon
#61800 Stacon



13. 3/4" Nylon Pulley
#HSH002 Nylon Pulley



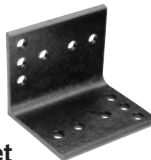
14. J-Nail
• 96 per pound
#80543 J-Nail



15. Chain & Sprocket Corner Kit
#HSH006 Corner Kit



16. Winch Bracket
#HSH074 4" x 4" x 5" long, painted

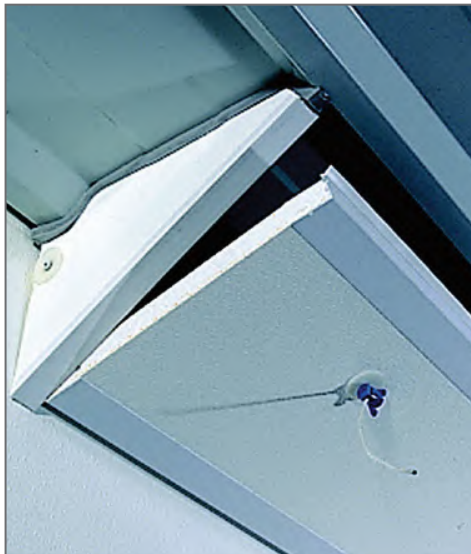


17. Winch
#DL61737 1400lb w/ Handle 2-way Ratchet Zinc
#HSH067 1200 LBS. HB-12M



Adjust-A-Baffle

- 1" polystyrene with fiberglass coating
- Flexible PVC hinge
- Available in 8", 12", 16", 18", 20" and 24" widths
- 8' sections



How to order your Adjust-A-Baffle:

- Order Baffle and Hinge separately (must order in 65' lengths):**
 - #GAP-1896 1" x 8" x 96"
 - #GAP-11296 1" x 12" x 96"
 - #GAP-11696 1" x 16" x 96"
- Order Baffle and Hinge separately (must order in 65' lengths)**
 - #GAP-WS65 Baffle weather-strip - 65'
 - #GAP-HS65 Hinge for baffle system - 65'
- Order S.S. Rod & Clamp package (must order in 100' lengths)**
 - #GRCP-SW-B 100' rod & clamp package
(INCLUDES: 105'-1/8" SS rod; 33-Azium Nuts; 60-3/16" x 1" lag eyebolts; 33-30" polyester lift cords; 33-Nylon fender washers; 40-1/8" Cable Clamps)
- Order S.S. Cable to connect rod to winch & closure spring**
 - #61739 1/8" stainless steel cable
 - #617321 1/8" stainless steel cable clamp
- Order Winch & Hardware**
 - #DL61737 1400 lb. winch w/cable keeper
 - #61740 L-bracket for winch
 - #60516 3/8" x 1-1/4" bolt (2 required)
 - #60682 3/8" lock nut (2 required)
 - #60670 3/8" x 1-1/2" flat fender washer (2 required)
- Order Corner Pulleys (one for Winch, one for Spring Return End)**
 - #HSH001 3-1/2" needle bearing pulley
 - #61744 Pulley bracket
 - #60649 1" x 2-1/2" x 5/16" U-bolt
 - #60681 5/16" lock nut
- Order Baffle Return Spring (takes place of counter weight)**
 - #HS17110 Baffle return spring

Actuated Plastic Ceiling Inlet



Pre-mounted actuation pulleys for simple and consistent installation. Single rod actuation. Durable corrugated plastic insulation stop. End panels designed to prevent air discharge from the ends of the inlet. A unique aerodynamic discharge orifice provides improved efficiency and air speed while routing condensation away from the air stream to prevent freeze up. Improved performance at a horizontal airflow to prevent drafting of pigs.

Item#	Air @ .10 SP	Framed Opening
#GACI-4000P2	4000 CFM	19" W x 46.5" L
#GACI-2500P2	2500 CFM	19" W x 27" L

Jet Ventilation Ag Roof Vent

Revolutionary, patented design, maximized Jet technology. Four directional louvers direct air along the ceiling and hold air up longer while mixing with room air and distributing it evenly. Features patented inlet design. Creates less draft and chilling and is engineered to allow more CFM through inlet than a C2000. TopJet inlets operate at higher static pressure for better air mixing. The snap-together design allows for minimal worksite waste. Rated at 1,812 cfm at .125 sp. Patent No. 6,475,078

Call for special pricing for large quantities and installation quotes!
#DL90640 Jet Ventilation Ag Roof Vent



Aerotech Attic Inlet

- Aerodynamic frame and door design for precise control
- Unique constant force springs provide easy adjustment of static pressure
- Doors close tightly to prevent attic condensation
- Stainless steel door hinges for high durability
- Integrated door latches are standard • Easy installation
- Models for mechanical or static pressure control of airflow
- Fully recyclable materials • Lower fuel cost
- Drier room environment • Improved air quality

#AB128SPM Aerotech Attic Inlet
#AB128PSM-01 Aerotech Attic Inlet w/ Insulated Door



Wall Inlet

- Fiberglass housing with foam filled plastic baffle
- Adjustable steel counterweight
- Rated at 3000 CFM
- Ideal for use with pre-heated hallways

#62990 Wall Inlet



Ceiling Air Inlet

- Laminated baffle to prevent damage during cleaning
- Plastic housing with stainless steel insert
- Adjustable locking lever allows the unit to be shut off or restricted

#GCAI-1000CW 1125 CFM w/ 17" x 17" R.O.
#GCAI-2700CW 3128 CFM w/ 25" x 25" R.O.



#AC3010



#GC1140

Double L 360° Insulated Attic Inlets

360° Airflow Attic Inlets direct tempered air evenly along the ceiling in all directions, resulting in uniform temperatures throughout room. Removable bottom lid for easy cleaning and installation.

#GC1140 Gravity Flow: 2,048 cfm @ 0.15 static pressure.
New Rough Opening - 23.75" x 23.75". Patent Pending.
#AC3010 Actuated: 2,518 cfm @ 0.15 static pressure.
New Rough Opening - 23.75" x 23.75". Patent Pending.

#GC1140 ...Gravity Flow 4 Way Insulated Attic Inlet
#AC3010 Actuated 4 Way Insulated Attic Inlet

4-Way Ceiling Diffuser

Traditional four-way negative pressure ceiling inlet. Quad inlet is made of UV stabilized polystyrene. The quad inlet is assembled from four single directional inlets, PVC mounting frame, 18-inch attic sleeve, and one-inch polystyrene insulation board. Single directional inlets are manually adjusted to direct air along the ceiling, towards the floor or closed. During minimum ventilation the quad inlet will deliver 500 cfm at 0.05 in of water. Overall Size: 31" x 31" 9" Packaging: Unassembled. Rough Opening: 27 7/8" x 27 7/8"

#HSI2000 4-way Inlet
#HSI200 Single Sidewall Inlet
#HSI204 Housing
#HSI202 Insulation Stop
#HSI203 Insulation Board
#HSI205 Blade Top
#HSI206 Blade Bottom
#HSI207 Pin Pivot for Top Blade
#HSI208 Pin Pivot for Bottom Blade
#6088611 Screw 1" Self Tapping





DirectAir Recessed Curved Sidewall Inlet

Aerodynamic, curved louver blade directs fresh air along ceiling for effective air mixing. High speed air stream reaches the middle of wide poultry houses.

- Approx. 3,474 cfm @ .1 SP
- Framed Opening: 44.5" x 13.5"
- Actual Inlet Size: 44" x 13"
- Insulated Blade & End Cap

#DL90554CH.....Insulated sidewall Inlet



Vent Board Light Hoods

- Proven by the University of Georgia.
- Improves bird performance.
- Effectively reduces sunlight infusion.
- Minimal reduction in airflow.
- Reduces rain, wind and weather flowing into your houses.
- Reduces concerns with your lighting program.



- #LH48-I.....48" x 12" Black Economy Grade
- #LH48-P.....48" x 12" Black Standard Grade
- #LH60-1.....60" x 12" Black Economy Grade



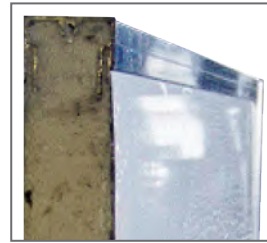
Tunnel Doors

Exclusively from Hog Slat!



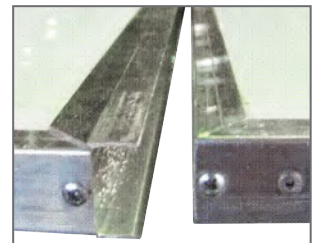
Hinge System

Innovative offset hinge seals tight but allows door to move away from the wall as it opens to prevent dust and debris accumulation in the bottom of the panel.



1" or 1-1/2" Panel

Available in 1" (R-7) or 1-1/2" (R-9) panel with aluminum skin and structural supports.



C-Lock Panel

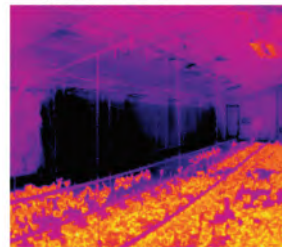
Integrated C-Lock panel connection eliminates the need for additional tools or fasteners.



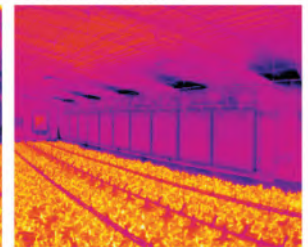
Choice of Attachments

Choose from tension loaded brackets or low profile plastic nut connectors.

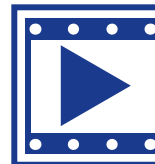
Typical tunnel curtain



TEGO tunnel door system



*Supplied by UGA Agricultural Engineering Department



See It In Action!
YouTube:
Tego Tunnel Door

H₂PAD

Manufactured of quality cellulose paper, oven-cured with acrylic polymer glue and fungicides.

- #H2-64E.....H2Pad 6" x 12" x 48" Pro Tec Edge 15/45 Flute
- #H2-65E.....H2Pad 6" x 12" x 60" Pro Tec Edge 15/45 Flute
- #H2-66E.....H2Pad 6" x 12" x 72" Pro Tec Edge 15/45 Flute

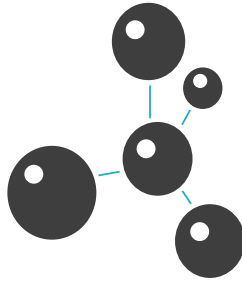


Production of H2PAD

begins by selecting heavyweight Saturation Grade Kraft Paper designed for high water absorption rates. This specialty Kraft is also formulated for consistent resin pick-up; a crucial step to ensure proper resin impregnation during manufacturing.

A proprietary resin

contains critical formulation of acrylic polymer glues, melamine additive for fire resistance, and fungicide additive. A special viscosity additive ensures even application on each sheet.



Triple Curing Process

The first oven bakes the resin coating on the paper. The second oven cures each sheet individually after corrugating and before pressing to ensure consistent glue contact points. A third oven cures each media block for three hours before cutting and sanding.

Constant Monitoring

Throughout the manufacturing process, technicians constantly monitor the moisture content of the paper. Consistent moisture content is critical to proper adhesion of glues and the curing process.



3/4" ProTec Edging

increases pad life by protecting against UV light and mechanical damage when cleaning. Helps to prevent the buildup of algae and minerals on the air entry side of the H2PAD. Special wetting additive promotes even water distribution by reducing the amount water collecting on the pad surface.



Cool Cell Cleaners

Cool-N-Klean Descaler

Contains: Surfactants and organic acids.

When to use it: Cool-N-Klean is a cleaner and descaler for water lines and cool cell pad systems.

How to Mix: Apply Cool-N-Klean per manufacturer's recommendations which are listed on the product jug depending on the type of application.

#I52996.....Cool-N-Klean



CWT Cool Cell Algacide Treatment

Contains: Dimethyl benzyl ammonium chloride 16%.

When to use it: Used for the control of algae and algae slime growth in recirculating cooling systems.

How to Mix: Multiple application options available on product label. Use as directed.

#CWTUN1903CWT



Triple-C by Proxy Clean Cool Cell Descaler

Triple-C efficiently removes mineral and scale build-up from Cool Cell pads. Equipment friendly with foaming action.

#PCP05.....Triple-C



Bio-Stop & Scale-Stop

Time-Released Pad Treatment

Build up of algae, fungi and scale clog-up your cool cell and reduce air flow. Stop this performance-robbing build up with Bio-Stop and Scale-Stop. Simply hang these solid strips in the cool cell tank and their unique time-released technology releases 24 hours a day - over a 30 day treatment cycle. Bio-Stop delivers a high performance "dual-quat" antimicrobial to rid your cool cells of organic substances. Scale-Stop uses a polymer agent that keeps scale in suspension and prevents them from sticking to the cool cell medium.



Hook one end of the hanger cord on the cloth of the Bio-Stop and Scale Stop strips.



Ensure the Bio-Stop and Scale-Stop strips are completely submerged in the drain water.

- #WAMMRN4 Bio-Stop, Green, up to 300 gals, treats up to 40' treats algae
- #WAMMRN2 Bio-Stop, Orange, 300-1000 gals, treats up to 85' treats algae
- #WAMPSS4000 Scale-Stop, Blue treats up to 85' treats scale

1" Cattle Float

The unique patented design of the Hudson Cattle float uses fluid pressure, as opposed to a lever arm and ball, as the force to close the valve. This compact, self-contained design greatly enhances the valve's reliability. The valve body is made of durable glass-filled nylon. Internal parts are of ABS plastic, silicone, and stainless steel. When properly installed, the valve will meet anti-siphon requirements. 300 gph at 30 psi. Bracket sold separately.



- #60390 1" Cattle Float
- #60390B03 Bracket for Hudson valve

Strainers & Screens



- #11271-VI 1-1/2" In-Line Strainer
- #10866-VI 20 Mesh Screen for In-Line Strainer

Topaz Float Valve by Jobe

• for Megacool and other cool cell systems



- #JOMFV1D MegaFlow High Flow 1" Inlet 80 GPM @ 65 PSI
- #JOMFV20DLT MegaFlow High Flow 3/4" inlet 65 GPM @ 65 PSI
- #JORJV20HF Rojo Low Flow 3/4" Inlet 6.8 GPM @ 75 PSI
- #JOTPV1D Topaz High Flow 1" Inlet 80 GPM @ 75 PSI
- #JOTPV20DLT Topaz High Flow 3/4" Inlet 55 GPM @ 75 PSI

Kerick Valve

Replacement Valve for Cool Cell Float.

- #KPT75SS Valve only



Tranz Former Valve

Converts float valves to a high flow Diaphragm style valve. Increased flow rate fills tanks faster during periods of peak demand. Fits most clamp-on floats and installs quickly without drilling. Contains an internal filter and comes with a manufacture 2 year warranty. Boost flow rates over 4 times that of using the Trough O Matic alone depending on your hose flow rate.



- #J-TFV fits #610802, Trough-O-Matic

Repair Kit for Cattle Float

Kit complete with Cone Screen, Retainer Ring, Diaphragm and Float.



- #603900 Repair Kit for Cattle Float

PVC Union

- #603841 1-1/2" PVC Union



Trough-O-Matic Float Valve

- #610802 Trough-O-Matic float valve



Kerick Float Valve Tank Mount

• PT75LS 3/4" In/Out

- #61043 Valve Float Tank Mount



Effluent Pump

• 1/2 Hp
• 220 Volt

- #PE51M 110V Effluent Pump
- #PE52M 220V Effluent Pump



Little GIANT Submersible Pumps

Little GIANT offers a full line of submersible pumps for all evaporative cooling systems. These pumps are engineered to provide the highest efficiency and dependability for extended and continuous use.



- Model#: 10-CIA
- 1/2 Hp split phase motor
- 83 GPM @ 5' head
- Cord Length: 10'
- 115 V; Amps: 11; Watts: 1100
- (H) 10.3" x (W) 9.4" x (L) 9.3"
- Switch: Automatic

#61088 115 V automatic (10-CIA)



- Model#: 9EH-CIA-RFS
- 4/10 Hp shaded pole motor
- 70 GPM @ 5' head
- Cord Length: 20'
- 115 V; Amps: 13; Watts: 1000
- (H) 9.3 x (W) 9" x (L) 11.7"
- Switch: Automatic

#9EN-CIA-RF 230 V (9EH-CIA-RFS)



- Model#: 10E-CIM
- 1/2 Hp split phase motor
- 80 GPM @ 5' head
- Cord Length: 20'
- 230 V; Amps: 6.5; Watts: 900
- (H) 10.25" x (W) 8.2" x (L) 9.6"
- Switch: Manual

#511575 Pump Submersible 1/2 Hp 230V 60Hz



- Model#: 6-CIA
- 1/3 Hp split phase motor
- 46 GPM @ 5' head
- Cord Length: 8'
- 115 V; Amps: 9; Watts: 720
- (H) 6" x (W) 8.5" x (L) 9.5"
- Switch: Automatic

#506158 115 V automatic (6-CIA)



- Model#: 6-CIM-R
- 1/3 Hp shaded pole motor
- 46 GPM @ 5' head
- Cord Length: 10'
- 115 V; Amps: 9; Watts: 720
- (H) 7.25" x (W) 7.25" x (L) 9.5"
- Switch: Manual

#506271 115 V manual (6-CIM-R)



- Model#: 8-CIA
- 4/10 Hp shaded pole motor
- 54 GPM @ 5' head
- Cord Length: 10'
- 115 V; Amps: 10; Watts: 830
- (H) 6" x (W) 8.5" x (L) 9.5"
- Switch: Automatic

#61089 115 V automatic (8-CIA)



- Model#: 8-CIM
- 4/10 Hp shaded pole motor
- 54 GPM @ 5' head
- Cord Length: 10'
- 115 V; Amps: 10; Watts: 830
- (H) 6" x (W) 8.5" x (L) 9.5"
- Switch: Manual

#508057 115 V manual (8-CIM)



- Model#: 8E-CIM
- 1/3 Hp shaded pole motor
- 52 GPM @ 5' head
- Cord Length: 10'
- 115 V; Amps: 11.5; Watts: 900
- (H) 8.3 x (W) 6.9" x (L) 9.6"
- Switch: Manual

#509207 115 V manual (9EN-CIM)



Switch & Diaphragm Rebuild Kit

#610891 for 506158 & 61089 pumps

#610881 for 61088 pumps

Goulds Pumps

- 3/4 Hp
- 1-phase
- 20' power cord
- Submersible



#LSP0712F 230 V 3/4 Hp

#LSP0711F 110 V 3/4 Hp

#1DW51C1EA 230 V 1/2 Hp Hi Capacity Submersible

#1DW51COEA 115 V 1/2 Hp Hi Capacity Submersible

#9L122 Capacitor for 1DW51COEA

#9L115 Capacitor for LSP0712F

#9L112 Capacitor for 1DW51COEA

#LSP0311 115 V 1/3-Hp Sump





Sump or Jet Pump

Your choice of Jet Pump or Submersible Pump with Sump Tank.



Less Pad Stretching

Increased water flow directed to pad front. Open top design for quick visual inspection. Aluminum pad retainers held with user-friendly Tri-Knob fasteners.



Heavy H2Pad

Coated with ProTec to protect against UV and mechanical damage.



Improved Drainage

Increased open area of trough cover quickly drains water away from pad bottoms to extend pad life.



Stronger Brackets

4" Wide Brackets prevent damage to trough and double leg supports eliminate twisting and sagging.



2.1 gallons linear foot



1.7 gallons linear foot

Greater Trough Capacity

Square trough increases water reservoir by over 24% over the round trough.



See It In Action!
YouTube:
Hog Slat Evap
Systems

GrowerSELECT® Submersible Cool Cell Pump

Pumps typically used for cool cell systems are adapted from other industries; waste water, sump pumps, etc. They are designed with a higher head pressure and low volume to lift water as high as 35'.

We went to one of America's leading pump manufacturers with a request to build a pump specifically designed for cool cell systems. The GrowerSELECT pump features a re-designed VORTEX IMPELLER resulting in a unit with a LOWER HEAD PRESSURE with HIGHER VOLUME. This combination allows a GrowerSELECT pump to service a longer cool cell run.



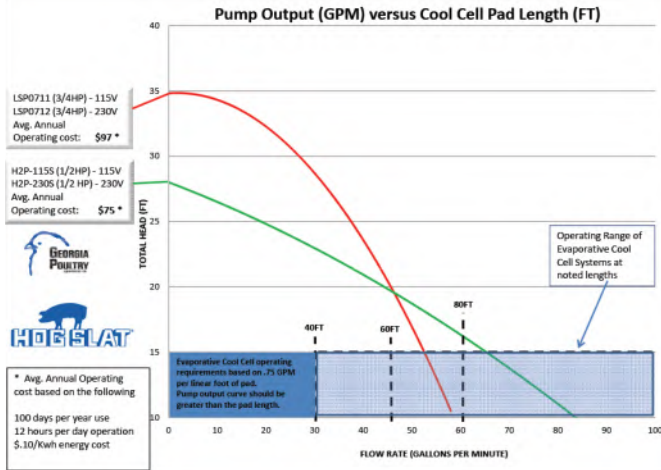
Get 3/4 Hp Performance from a 1/2 Hp Pump!

The special impeller allows the use of a 1/2 Hp motor instead of a 3/4 Hp motor. Electrical usage is decreased by up to 25%.

Rugged Features for a Long Lasting Pump:

- Oil-filled motor
- Epoxy coated, cast iron housing
- 2" discharge with 1-1/2" bushing to adapt to most systems
- 2" bottom suction inlet
- 15' waterproof power cord
- Silicon carbide seal
- 115 / 230 Volt- 5.5/2/7 amps
- 15.87" high x 9.5" wide

#H2P-115S 1/2 Hp submersible pump, 115 V
#H2P-230S 1/2 Hp submersible pump, 230 V



GrowerSELECT® Jet Pump



GrowerSELECT's Compact Jet Pump delivers outstanding performance. Efficient design minimizes friction and turbulence reducing power consumption.

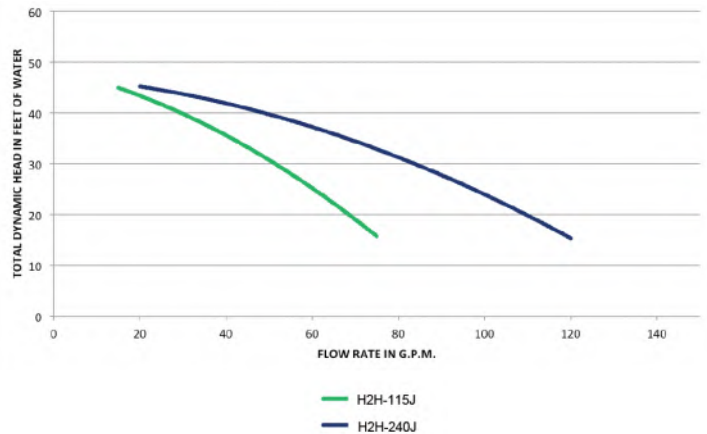
Self-priming pump design protects internal components from wear.

Strainer basket features a **Transparent Lid** for easy inspection. Larger capacity extends time between clean out. Easy access drain plug for service and winterizing.

Features Include:

- Available as 115 or 230 volt models
- Includes 9 foot power cord
- 1-1/2" discharge pipe
- Open drip proof motor

#H2P-120JA 3/4 Hp Jet Pump, 120 V
#H2P-240J 3/4 Hp Jet Pump, 240 V



Extension Kit for Round Pipe Cool Cell Systems 10' Add-on Kit for Round Style 8" Trough Evaporative Cooling System Includes trough, cover cover, sprayer, deflector, pad retainer and 8" trough. Does not include pad or end panel.

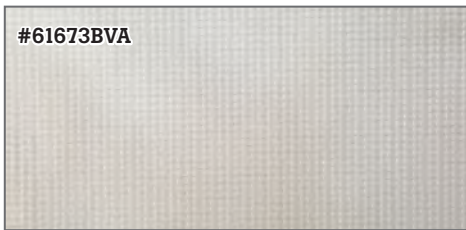
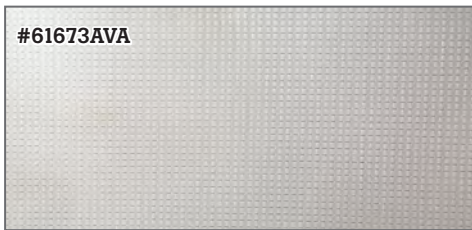
#HSES-RA10 Extension Kit



Polylite®

Choose from Polylite® Super with 10x10 weave or the costing saving Poly Econo with a 9x9 weave. Also available in light blocking Black/White Premium option.

Item#	Net Size	Weight (oz.)	Color	Hems
• PolyLite® Super				
61686-14	18"	4.2	Clear	1
61686-33	21"	4.2	Clear	1
61685	57"	4.2	Clear	1
61686	69"	4.2	Clear	1
61687	81"	4.2	Clear	1
61692	66"	4.2	Clear	2
61693	78"	4.2	Clear	2
61686-37	73"	4.2	Clear	1-2 pockets
• PolyLite® Econo				
61686EC	69"	4.3	Clear	1
61687EC	81"	4.3	Clear	1
• Black/ White Premium				
BWP201	18"	6	B/W	1
616853	57"	6	B/W	1
616865	69"	6	B/W	1
BWP701	81"	6	B/W	1
• Specialty Curtains				
61840	91"	10	White-Vinyl	1-5 pockets
61673B3	94"	13	Clear Frosty Vinyl	1-2 pockets



HERCULITE®

Herculite sets the standard for high performance livestock curtains. Manufactured from flexible PVC composite fabric with polyester scrims for high tear strength. Herculite curtains are shrink and mildew resistant with excellent UV.

Item#	Net Size	Weight (oz.)	Color	Hems
61673BVA	66"	13	Frosty Clear	1
CVT136	68"	13	Frosty Clear	1
CVT137	80"	13	Frosty Clear	1
61673AVA	66"	9.5	Frosty Clear	1
61674	68"	9.5	White	1
61884-4	80"	13	Frosty Clear	1-1 pocket



FabTex®

The Super Clear coating allows the most light transmission of any high weight curtain in the market. Durable PVC material remains flexible even during cold temperatures.

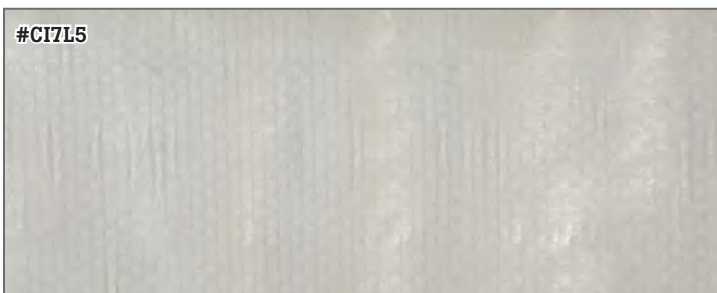
Item#	Net Size	Weight (oz.)	Color	Hems
FABTEX160X60	57"	17	Super Clear	1
FABTEX160-6	60"	17	Super Clear	1
FABTEX160X72	69"	17	Super Clear	1
FABTEX160-7	60"	17	Super Clear	1-2 pockets
FABTEX160-9	91"	17	Super Clear	1-2 pockets



Agri-Barrier™ Vinyl Curtain

PVC laminated curtain manufactured with mildew and UV blocking additives. Crystal Clear color for maximum light admission.

Item#	Net Size	Weight (oz.)	Color	Hems
CEL1668SHTS	69"	16	Crystal Clear	1
CEL1684W3P	84"	16	Crystal Clear	1-2 pockets



Insulated Curtain

6-ply insulated curtain with a compressed R-4 rating. Sewn every 4" to prevent insulation sag and to allow the curtain to fold more evenly when opening.



Item#	Net Size	Weight (oz.)	Color	Hems
CI7L2	24"	NA	Gray/ White	1
CI7L3	36"	NA	Gray/White	1
CI7L5	60"	NA	Gray/White	1
R62X66	66"	NA	Gray/White	1
CI7L6	72"	NA	Gray/White	1
CI7L7	84"	NA	Gray/White	1



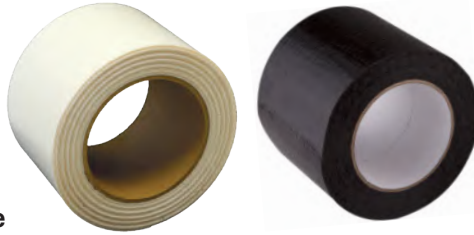
Brooder Curtains

Manufactured from
10x10 Super-Poly

Custom sizes available!

#522412	52', 1 zipper center house curtain
#522413	52', 2 zipper center house curtain
#522411	42', 1 zipper center house curtain
#522414	42', 2 zipper center house curtain
#522494	12' Curtain 10 x 10 (order to size / NO ZIPPERS)

Curtain & TriPly Celcing Repair Tape



#61571	Polylite curtain tape - 3" x 60' roll (clear)
#61570	White curtain tape - 150' Roll
#61571BW	Polylite black & white 3" x 60' roll
#844192	White tri ply repair tape (ceiling)
#844193	Black tri ply repair tape (ceiling)
#61571B	Curtain Tape Black 3" x 60'
#61570	Herculite White Curtain Tape - 150' roll



Gorilla Tape

Long lasting alternative to curtain tape.



#6035120	Black, 1.88" x 35 yd. roll
#6025002	White, 1.88" x 30 yd. roll
#6027003	Clear, 1.88" x 27' roll
#6003001	Tough & Wide 3" 30 yd. Roll Black
#6010902	9 yd. Roll Camo

Vinyl Glue

- Super-Strong, waterproof, flexible bonds to vinyl coated and vinyl laminated fabrics
- Highly resistant to temperature and weather extremes
- Excellent for Patching and Sealing



#1003	8 oz. can
#6719	1 qt. can

CPro Poly Patch

- Adhesive used to repair PolyLite Curtains



#61719-V	1qt.
----------	------

Loctite Spray Adhesive

Professional grade premium quality formulation for temperature resistant permanent bonds.

- Dries clear without yellowing
- Sets in 10 minutes, fully cured in 24 hours.
- Moisture and UV resistant.



#119241	Indoor/Outdoor 13.5oz
---------	-----------------------

Bondseal Spray Adhesive

Multi-purpose glue with adjustable spray pattern.



#844195	Multi Purpose, 16 Oz
---------	----------------------

3M Scott Weld Spray Adhesive

Clear Hi-Strength adhesive with great bonding performance to multiple materials.

- 10-minute cure time
- Clear
- 180 psi shear strength



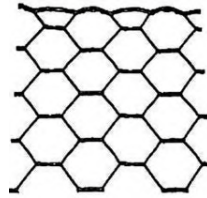
#6785091	#90 High Strength, 24oz
----------	-------------------------



Plastic Coated Poultry Wire

- PVC galvanized 20 gauge wire with 1-inch hex opening

#80569PW.....	PVC Coated 2' x 150'
#80580-1PW.....	PVC Coated 5' x 150' 3/4" Hex
#80580PW.....	PVC Coated 5' x 150'
#80581-1PW.....	PVC Coated 6' x 150' 3/4" Hex
#80581PW.....	PVC Coated 6' x 150'



A.



B.



C.

Counter Weights

A) #NC61752.....	25 lb. concrete
B) #NC61751A.....	4-1/4" diameter, 12 lbs, PVC
C) #HS917-416.....	2" solid metal, 17" long, 15 lbs

Curtain Brackets

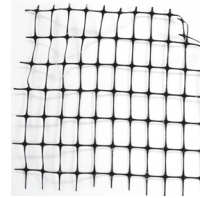
- Fits 66" curtain
- Space every 4'
- Constructed of 1/4" x 1" powder-coated metal



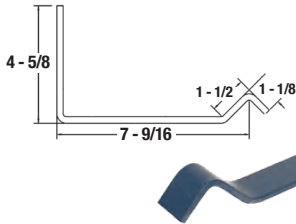
#8010790100.....	5' 8" curtain bracket painted
#8010690100.....	7' 3-1/2" curtain bracket end wall
#8010450100.....	4'6" curtain bracket w/ 5" angle, Painted

Plastic Bird Netting

- 330'/roll



#TNX60020409.....	6.5' x 330' Mesh Size .87" x 1.38" CintoFlex D
#TNX60032409.....	6.5' x 330' Mesh Size .51" x .59" CintoFlex E
#TNX60033409.....	4' x 330' Mesh Size .51" x .59" CintoFlex E
#TNX60045409.....	5' x 330' Mesh Size .71" x .98" CintoFlex M
#TNX60050409.....	6.5' x 330' Mesh Size .71" x .98" CintoFlex M



Bracket for Curtain

- Extended

#8050680100.....	Bracket for Curtain
------------------	---------------------



Square Tack Nail

- Galvanized double dipped

#805421.....	1-1/2" long, galv, square 64/ lb
#855ARZ.....	1" long, galv round head 74/ lb
#805420.....	1-1/4" long, plastic cap 286/lb
#SWSSCN150.....	1-1/2" metal cap
#SWSSCN250.....	2-1/2" metal cap



Fence Staples

#84548G.....	2" Fence Staple
#80549.....	3/4" Bird Wire Staples

Batten Strips

- Use to fasten bottom of curtain to building, does not crack or rot like wood.

#84588.....	8' x 1-3/4" aluminum batten strip
-------------	-----------------------------------



Black Poly Strapping

- 1-3/4" wide x 300' roll

#61572.....	Black poly strapping, 1-3/4" x 300' roll
-------------	--



Retainer Strap

- 2" wide X 300' roll

#TS102925.....	Retainer strap for curtain
----------------	----------------------------

Standard Grade Diamond Braid Polyester Rope

- Low stretch.
- UV resistant.
- Abrasion resistant.



#61725.....	3/16" x 1000'
#61724.....	1/8" x 1000'
#61724A-500.....	1/8" x 500' roll
#61725A-500.....	3/16" x 500' roll



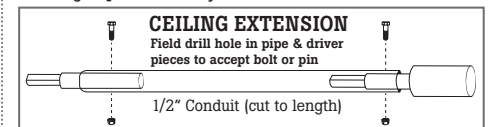
Black Poly Rope

#61806.....	1/4" black poly rope - 1000'
#HB1024.....	3/16" black poly rope - 1000'



Cup Hook Driver

- Driver holds cuphooks in place allowing for single-handed placement. After insertion, cuphook is released with a simple pivot of the tool. Also excellent for removing existing cuphooks safely. Fits drills with 1/2" chuck.



#HB6008.....	Cup and Hook Driver
--------------	---------------------



Split Reel Ceiling Winch

- 4000 lb. capacity
- Enclosed brake cover
- 41:1 gear ratio
- 2-1/2" diameter hub
- Cable capacity: 9/32" x 54' (27' per side)
- * 4000 lb. capacity based on using 2 cables in opposite directions. Single cable capacity is 2000 lb.

#DL61811 Split Reel Ceiling Winch

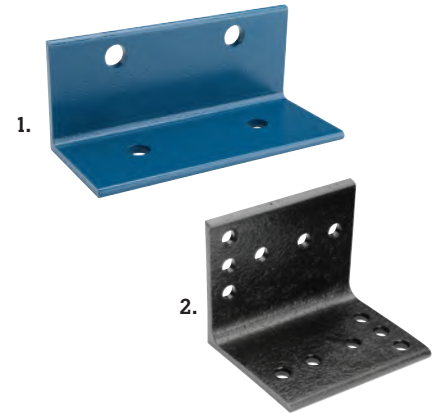
See page 276
for Winch
Crank Handles



Single Drum Ceiling Winch

- 3000 lb. capacity
- 45:1 gear ratio
- 3-3/4" diameter hub
- Cast construction, red finish

#AMT24030 Single Drum Ceiling Winch



Winch Mounting Brackets

- 1) #61740 3" x 3" x 7" long, painted
- 2) #HSH074 4" x 4" x 5" long, painted



Split Reel Ceiling Winch

- 2000 lb. capacity
- Self-braking
- 4.1:1 worm gear ratio
- 1-3/4" diameter reel
- Cable Capacity: 134' (67' per side) of 1/8"
- Black epoxy finish

#HSW01 Split Reel Ceiling Winch



Single Reel Ceiling Winch

- 2000 lb. capacity
- Self-braking
- 4.1:1 worm gear ratio
- 1-3/4" diameter reel
- Cable capacity: 140' of 1/8"
- Black epoxy finish

#HSW02 Single Reel Ceiling Winch



Auto Brake Hand Winches

Automatic brake holds handle in position when released to prevent injuries from free spooling handle.

- Drum Diameter: 2.5"
- Gear Ratio: 5.4:1
- Cable Capacity (1/4"): 60 feet
- Strap Capacity: 31 feet
- Zinc plated finish

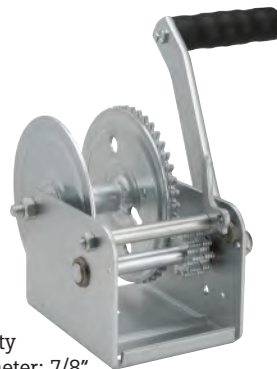
#DL5351-24Z 1200 lb
#DL5352-24Z 1500 lb



Hand Winch

- 1200 lb. capacity
- Drum Hub Diameter: 1.3"
- Gear Ratio: 3.87:1
- Handle Length: 6.7"
- Cable capacity: (3/16): 65 feet
- Black Epoxy Finish

#HSH067 Hand Winch



Hand Winch

- 1400 lb. capacity
- Drum Hub Diameter: 7/8"
- Gear Ratio: 4.4:1
- Handle Length: 9.5"
- Cable Capacity: (1/4"): 40 feet
- Strap Capacity: 31 feet

#DL61737 Hand Winch



Auto Brake Hand Winch

- 3500 lb. capacity
- Drum Hub Diameter: 1-5/16"
- 2-speed • Gear Ratio: 12:1 (High) 6:1 (Low)
- * Auto brake/Reversible ratchet
- Handle Length: 9.5"
- Cable Capacity (3/8"): 37 feet
- Zinc finish

#DL3500 Auto Brake Hand Winch

Speed Crank

The Speed Crank increases the speed of operating manual winches while eliminating the work and strain. The overall length is eight-inches with a 1/2" shaft. Center opening fits over a one-inch nut handle.



#HS802 Speed Crank

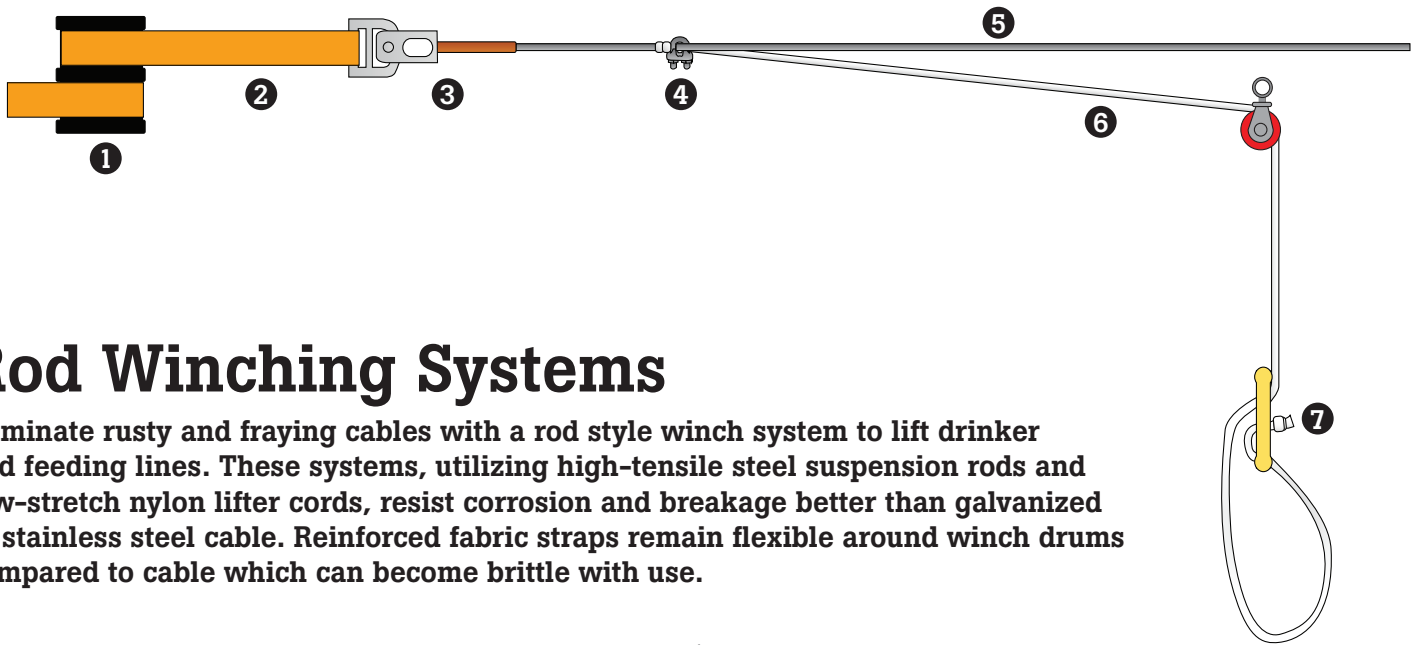
Up to 3X faster than manual winches!



Fits 1/2" drill



Fits over base of the winch handle



Rod Winching Systems

Eliminate rusty and fraying cables with a rod style winch system to lift drinker and feeding lines. These systems, utilizing high-tensile steel suspension rods and low-stretch nylon lifter cords, resist corrosion and breakage better than galvanized or stainless steel cable. Reinforced fabric straps remain flexible around winch drums compared to cable which can become brittle with use.



1) Manual WindLift Winch

- 5000 lb. capacity
- 90:1 ratio
- 2" diameter spilt reel
- Cable capacity: 64' of 3/16" cable
- Pre-drilled and tapped to accept strap kit
- Black epoxy finish

#HSW03 Manual WindLift Winch



Electric Ceiling Winch with control

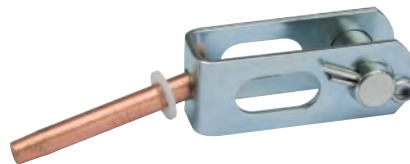
- 5000 lb. capacity
- Prewired 3/4 hp, 120V motor
- 2 ft/ min lift speed
- 2" diameter spilt reel
- 9' power cord
- 9' controller cord

#24051 Electric Ceiling Winch with control



2) Strap Kit with Bolt

- #HSH055 5000 lb. (pair)
- #HSH050 Strap Bolt only for HSH055
- #HSH056 2000 lb. (pair)
- #HSH051 Strap Bolt only for HSH056



3) Dead-end Clevis

- #HSH053 use with 1/8" suspension rod
- #HSH054 use with 3/16" suspension rod



4) Galvanized Cable Clamps

- #61732 1/8"
- #61733 3/16"



5) Suspension Rod

- #HSH17060-0390 1/8" x 390' Roll
- #HSH17060-0490 1/8" x 490' Roll
- #HSH17060-590 1/8" x 590' Roll
- #HSH17061-0390 3/16" x 390' Roll
- #HSH17061-0490 3/16" x 490' Roll
- #HSH17061-0590 3/16" x 590' Roll

6) Standard Grade Diamond Braid Polyester Rope

- Low stretch.
- UV resistant.
- Abrasion resistant.



- #61725 3/16" x 1000'
- #61724 1/8" x 1000'
- #61724A-500 1/8" x 500' roll
- #61725A-500 3/16" x 500' roll



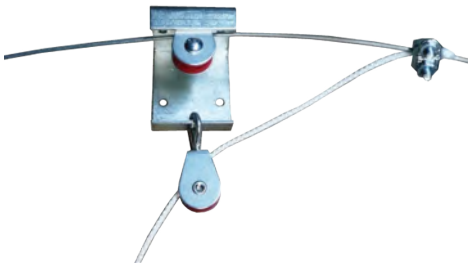
#HSCA-1



#HSCA-3

7) Rope Adjuster

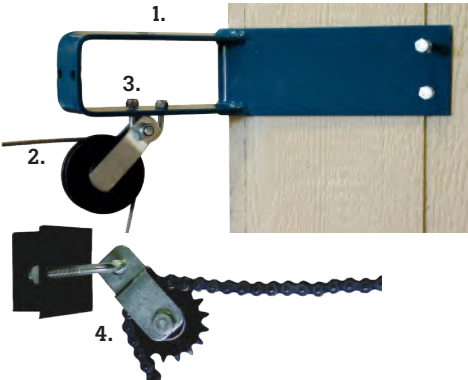
- #HSCA-1 Feed Line Drop Cord Adjuster
- #HSCA-3 Heavy Duty Cord Adjuster



Bracket With Dual Pulleys

This bracket has two pulleys. One pulley can be used to guide the main cable or rod and the other pulley can be used to guide the opening and closing of the vent doors. The bracket should be secured to the wall with two wood screws (not provided).

#HSH041 for Vent Doors



1. Corner Bracket

#617431 Large Corner Bracket

2. Corner Pulley

#HSH001 ... 3-1/2" Cast Iron, Double Flange Ball Bearings

3. U-bolts/Lock Nuts

#60649 U-bolt

#60692 Lock nut

4. Chain & Sprocket Corner Kit

#HSH006 Chain & Sprocket Corner Kit

#HSH057 30" Replacement Chain

Conduit & Curtain Pipe



#61720 1/2" x 10' galv. w/crimped end

#10802 Rebar 3-3/8" x 10'

#60340 Pipe 1/2" x 21' galv. w/end coupling

Cup Hook

#60665 1/4" x 3-1/2"

#606655 1/4 x 3-1/2" - SS

Screw Hook

#HSH049 3/8" x 4" zinc

Stainless Steel Split Pulley

#HSH010 1-3/8"



Nylon Swivel Pulley

#HSH004 1-7/8"



Galvanized Pulley

#HSH002 7/8", zinc housing



Large Galvanized Thru-Wall Pulley

#HSH009 3", Double flange ball bearings



Corner Pulley

#HSH040 4-1/2" Cast w/ Needle Bearings



Horizontal Fiberglass Composite Pulley

#HSH042 3-1/2" Fiberglass, self-lubricating



Double Back Pulley

#HSH071 3-1/2" Fiberglass, self-lubrication



J-Nail

#80543 1-3/4", galvanized dbl. dipped, 61/lb



Nylon Strap Pulley

#HSH005 1-7/8"



Stainless Steel Pulley

#HSH003 7/8"



Steel Strap Pulley

#HSH008 1-1/2" Steel Strap Pulley

#521531 1-1/2" Stainless Steel Strap Pulley



Small Thru-Wall Pulley

#61749 2-1/2" Through Wall Pulley



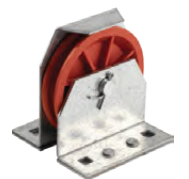
Horizontal Sprocket Assembly

#HSH043 Cast sprocket for chain



Enclosed Single Block Pulley

#HSH039 3-1/2" Fiberglass, self-lubricating



Composite Pulley

#HSH025 2-1/2" fiberglass composite



Brackets & Mounting Hardware

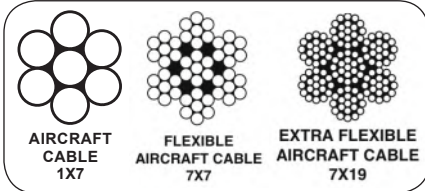
#61745 3" x 3" Pulley Bracket

#60649 5/16" U-bolt

#60681 5/16" Nylock

#60580 5/16" Washer





Aircraft Cable

Stainless Steel

Item#	Size	Dia.	Breaking Strength
61731	7x7	3/32"	920 lbs.
61739	7x7	1/8"	1,700 lbs.
61739-250	7x7 250'	1/8"	1,700 lbs.
61739-500	7x7 500'	1/8"	1,700 lbs.
61739-1000	7x7 1000'	1/8"	1,700 lbs.
617271	7x19	5/32"	2,400 lbs.
617281	7x19	3/16"	3,700 lbs.
617281-250	7x19 250'	3/16"	3,700 lbs.
617281-500	7x19 500'	3/16"	3,700 lbs.
617281-1000	7x19 1000'	3/16"	3,700 lbs.
61728-1200	7x19 1200'	3/16"	4,200 lbs.
61728-1300	7x19 1300'	3/16"	4,200 lbs.
617291	7x19	1/4"	6,400 lbs.
617276	7x19	5/16"	9,000 lbs.

Galvanized

Item#	Size	Dia.	Breaking Strength
52260	1x7	1/16"	500 lbs.
52260-500	1x7 500'	1/16"	500 lbs.
52260-1000	1x7 1000'	1/16"	500 lbs.
61726	7x7	1/8"	1,700 lbs.
61726-250	7x7 250'	1/8"	1,700 lbs.
61726-500	7x7 500'	1/8"	1,700 lbs.
61726-1000	7x7 1000'	1/8"	1,700 lbs.
617261	7x19	1/8"	2,000 lbs.
61727	7x19	5/32"	2,800 lbs.
61728	7x19	3/16"	4,200 lbs.
61728-250	7x19 250'	3/16"	4,200 lbs.
61728-500	7x19 500'	3/16"	4,200 lbs.
61728-1000	7x19 1000'	3/16"	4,200 lbs.
61729	7x19	1/4"	7,000 lbs.
61729-100	7x19 100'	1/4"	7,000 lbs.



#598820



#HSH059



#598821



#59882

Cable Cutters

- #598820 Banana handle, for cable up to 3/16"
- #59882 Felco For cable up to 3/16"
- #HSH059 For cable up to 3/16"
- #598821 Heavy Duty, replaceable blades, for cables up to 1/4"
- #AMTC9BLADE Replacement blades for #598821, price per blade, need two per tool
- #HSH059 Economy version of 59882, up to 3/16"



#AS61394



#59925



#AS58741

Swagging Tools

- #AS61394 Crimping/Swagging Tool, 18" Green
- #AS58741 Crimping/Swagging Tool, 24" Red
- #59925 Swagging Tool Heavy Duty



#HE823015



#10906

Sta-Kon Crimpers

- #HE823015 Klein 1005 Red Handle
- #10906 Economy Crimper



#HSH032

#HSH027

Plastic Curtain Nut

- (color may vary)
- #HSH032 1/8"
 - #HSH027 3/16"



#52328

#61800

#61810

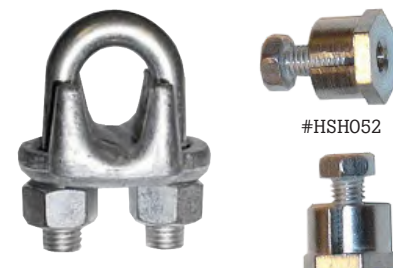
Sta-Kon

- #52328 1/8" open
- #61800 1/8" closed
- #61810 3/16" open



Aluminum Cable Sleeves & Button Stops

- #52286 1/16"
- #52284 1/8"
- #52283 3/16"
- #52285 1/8" x 3/16"
- #52288 3/32"
- #522844 1/4"
- #HSH064 1/8" Button Stop
- #HSH066 3/16" Button Stop
- #HBASTOP093 3/32" Button Stop



#HSH052

Cable Clamps

- #61732 1/8" Galvanized
- #61733 3/16" Galvanized
- #61734 1/4" Galvanized
- #HSH052 1/16" Shocker wire clamp
- #617321 1/8" Stainless Steel
- #617331 3/16" Stainless Steel



Air Transfer Gasket

#JPT2436..... Gasket

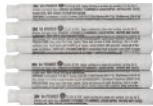


Tether Kit

#JAN3213..... 1 per 120' Unit

Blower Motor

- 1/40 Hp
 - 115V
 - .60/ .75 amps
 - 2420/2480 rpm
- #HS9070..... Blower Motor



Poly Patch

#JPP4..... 4" x 48"



Black Flex Hose

#JA6967..... 3" x 3'



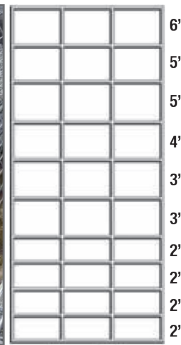
Polyvent III Bag

#JAPV5..... 5' Polyvent Bag
 #JAPV4..... 4' Polyvent Bag
 #JAPV3..... 3' Polyvent Bag



Curtain Pockets

#61892L.....	18" x 66" Left pocket, Fiberglass
#61892R.....	18" x 66" Right pocket, Fiberglass
#61890L.....	24" x 84" Left pocket, Fiberglass
#61890R.....	24" x 84" Right pocket, Fiberglass
#61895.....	23" x 72" Large, Fiberglass
#61896.....	14" x 72" Small, Fiberglass
#PCP1866A.....	18" x 66" White poly, pair
#PCP1884A.....	18" x 84" White poly, pair



Welded Hog Panel

- Constructed of .225 dia wire with 8" vertical spacing. Welded before galvanizing.
- #80641..... 34" x 16' galv. welded hog panel
 #80647..... 36"x 16' 6 ga. with 2"x4" spacing



VCS Curtain System

- Minimizes rodent nesting problems
- Visual appearance improvement
- Easy Clean-Up
- Extended life compared to previous method of closure
- Design ease for future replacement or repairs
- Easy 4-step installation

#61849..... 18' sections w/hardware
 #61894..... Curtain pockets
 #617256..... Cord With Beads



Door Panels

Door cover panels reduce drafts and improve static pressure. Features two heavy-duty, rust-proof nylon zippers on the sides. Center flap rolls up for storage during warm weather. Standard sizes 10' High x 12' and 14' wide. Can be ordered in custom sizes.

#5224111..... 10' x 14'
 #DHBW1213-R2Z..... 10' x 12'

**Pro-Tech, Inc.
Curtain Minder
CM5000D**

A knob on the front of the Curtain-Minder controls the delay time for releasing the curtain winches. The delay is adjustable between zero and ten minutes. Zero or near zero allows the operator to test the systems and the curtain winching system quickly. The adjustment also provides the operator the ability to match the transfer time on an automatic standby generator.

- 230 Volt
- Adjustable 0-10 minute time delay
- Alarm output
- Controls up to 4 winch kits
- 12 volt battery

#52208.....Curtain Minder CM5000D



**Linear Vent
Actuator Assembly**

Hog Slat's 24" Linear Actuator is designed to be used with automatic ventilation controls. Bi-directional control with a built-in potentiometer feedback for position sensing of inlets with adjustable limit switches. Clamped extension boots and superior motor seals offer improved protection of interior components from dust and water. Includes terminal connection enclosure. Hog Slat's linear actuator has an IP Code (or International Protection Rating) of 65 versus competitive brand's rating of only 53. 50 inlet capacity with a 1:1 ratio. 800 pound max load at a 1:1 ratio.



*Shown with optional mounting bracket

Item#	Voltage	Travel/Sec.	Housing Color
#HS667-24	120	1/4"	Blue
#HS667-24-240	240	1/4"	Blue
#HS667B-24	120	5/64"	Black

**Pro-Tech, Inc.
Winch Kit**

#52212.....Winch Kit



**PowerDrop™
for affordable protection**

- Alarm contact for the PowerDrop™ signals an alarm system upon the release of the curtain.
- Switch features stainless steel actuator and watertight construction
- 304 S.S. Construction
- Contacts are normally open or normally closed, rated at 3 amps 250 volts
- Not effected by cold or wet weather
- 5 minute drop delay
- Battery free operation
- Now for Poultry with 2-minute delay



#PD120..... 120 V, 5 min delay
 #PD120P..... 120 V, Poultry, 2 min delay
 #PD120A..... 120 V, 5 min delay w/ alarm contact
 #PD120PA..... 120 V, Poultry, 2 min delay w/ alarm contact
 #PD208..... 208 V, 5 min delay
 #PD208P..... 208 V, Poultry, 2 min delay
 #PD208A..... 208 V, 5 min delay w/ alarm contact
 #PD208PA..... 208 V, Poultry, 2 min delay w/ alarm contact
 #PD240..... 240 V, 5 min delay
 #PD240P..... 240 V, Poultry, 2 min delay
 #PD240A..... 240 V, 5 min delay w/ alarm contact
 #PD240PA..... 240 V, Poultry, 2 min delay w/ alarm contact
 #PDA..... Alarm kit

Hired Hand Curt-O-Matic

- Automatically drops the side curtains of your confinement house if the power should fail.
- With optional thermostat – Automatically drops the side curtains in the event of high temperature extremes, preventing thousands of dollars in potential loss.
- A huge return for a small investment.
- The best way to insure your investments!



#H6608-0105..... 240 V
 #H6608-0100..... 120 V
 #H6608-0101.....Curt-O-Matic Complete with Thermostat 120 V
 #H6608-0106..... Curt-O-Matic Complete with Thermostat 240 V
 #H6608-0115..... Curt-O-Matic with Auxiliary Fan Switch
 #H0412-1382..... Replacement Bi Metal Finger Heating Element
 #H6408-1225..... Replacement Release Arm
 #H6408-2228..... "J" Holder/Hook for Winch
 #H6450-1220..... Hardware Package for Curt-O-Matic

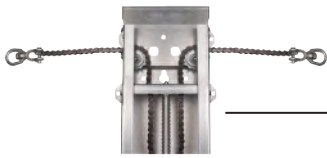
Fan Release Sensor

- Reduce stress on curtain machines and cables.
- The Fan Release Sensor disengages fans while the curtain motor is running to eliminate curtain drag due to static pressure.
- The sensor comes with instructions and is pre-wired for installation by an electrician or Hog Slat service representative.



#880621..... Fan Release Sensor, 110V

GrowerSELECT CURTAIN MACHINE



Optional chain & sprocket drive eliminates cable breakage. Features a 13 tooth sprocket with a size 50-5/8" roller chain.



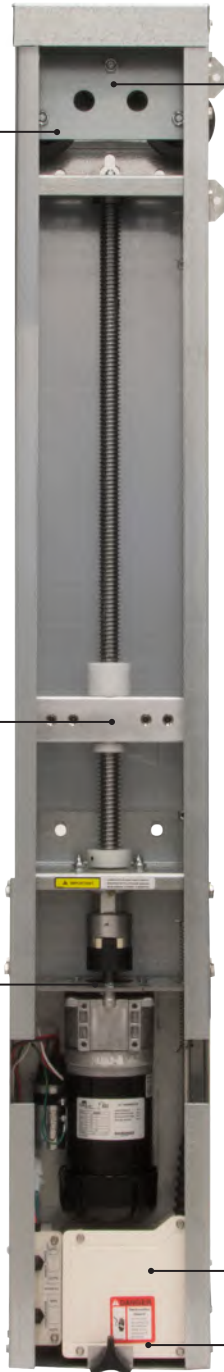
Smooth Operation

Aluminum load block rides on acetal plastic bearings and guide blocks imbedded in the cabinet side, for smooth motion and to stabilize the shaft.



Easy Servicing

Features a removable front cover, precision cut outs, and swivel points to allow for easy removal of the ACME screw and block.



Three sealed, ball bearing head pulleys for multiple mounting options. Farm-duty, ACME screw efficiently transfers power to load block.



Suited for Multiple Motor Sizes

Fitted for 120V, 240V, 15, 30 and 60 RPM models.

Simple Limit Switch

Dual limit switch is backed by secondary safety lock-out switch. Includes auxiliary switch for backup fans.



Local Controls

Manual control switch allows for quick adjustments of the screw and limit switch positions directly from the box.

Patent Pending Enclosure

Water resistant box protects switches and electrical components in one single enclosure.

#HS583E-2415	24" travel, 15 rpm, cable system
#HS583E-2430	24" travel, 30 rpm, cable system
#HS583E-2460	24" travel, 60 rpm, cable system
#HS583E-2430S	24" travel, 30 rpm, sprocket drive
#HS583E-3615	36" travel, 15 rpm, cable system
#HS583E-3630	36" travel, 30 rpm, cable system
#HS583E-3660	36" travel, 60 rpm, cable system
#HS583E-3630S	36" travel, 30 rpm, sprocket drive
#HS583E-4830	48" travel, 30 rpm, cable system
#HS583E-4860	48" travel, 60 rpm, cable system
#HS583E-4830S	48" travel, 30 rpm, sprocket drive

GrowerSELECT Gear Motor

- 115 V, 60 Hz, 1/8 HP
- 30 RPM
- For new style machine, door opens on hinge



#HS9050 Gear Motor

GrowerSELECT Raise-Off-Lower Switch

- Prev. #G1775



#EL1001 Raise-Off-Lower Switch

Toggle Switch

- DPDT, 10 Amp, 250 V, 2 Position



#EL1005 Toggle Switch

Acetal Load Nut

#HS583-8-2A Acetal Load Nut



Bearing Flange

- 1" I.D. 3-piece

#HS583-42 Bearing Flange



Snap Action Roller Switch

- 15 Amp

#EL1135 Snap Action Roller Switch



Acme Screw

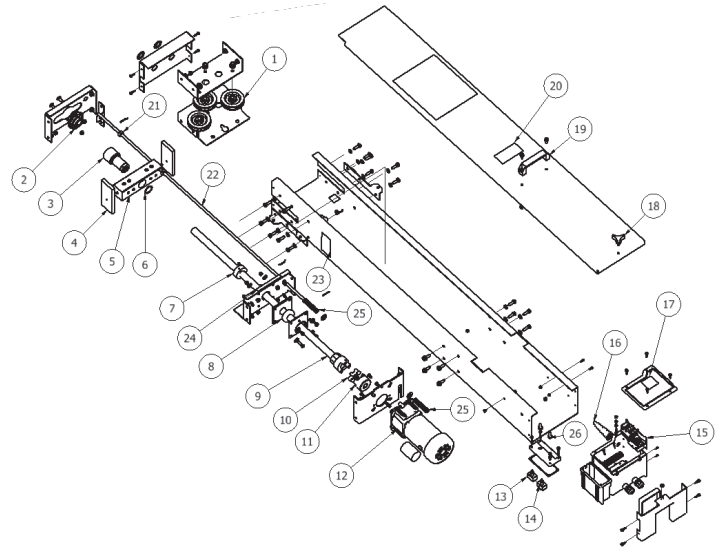
- 36"

#HS583-11A36B Acme Screw



HS583E Curtain/Vent Machine Replacement Parts

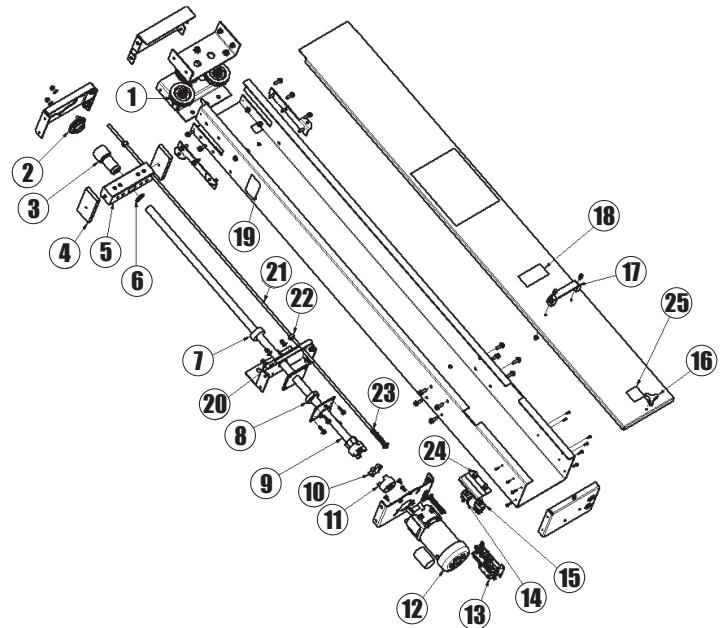
Key	Part#	Qty.	Description
1	HS583-34	3	Pulley, Cast 3-1/2", double ball bearings
2	HS583-42	1	Bearing Flange 1" I.D
3	HS583-8-2	1	Load Nut, nylon
	HS583-8-2A	1	Load Nut Replacement Kit
4	HS583-9	2	Slide, load block
5	HS583-8-1	1	Load block
	HS583-8	1	Kit, Complete Load Block Assembly & Load Nut
6		1	1-1/4" External snap ring, supplied with HS583-8-2A
7	HS583-41	1	Threaded collar, seal thrust bearing nylon
8	HS583-12	1	Thrust bearing, 1" ID, D9
9	HS583-11A24B	1	ACME screw, 24" machine
	HS583-11A36B	1	ACME screw, 36" machine
	HS583-11A48B	1	ACME screw, 48" machine
10	HS613	1	Spider Gear-spacer Hytrel (white) LO90/LO95
11	LOV38146	1	Coupling Jaw LO95 5/8" bore & keyway
12	HS9050	1	Motor 1/8 HP, 115V AC, 60 Hz, 1.9A FL, 28RPM
	HS9051	1	Motor 1/8 HP 230V AC, 50/60Hz, 0.75/0.90A FL, 24/29 RPM
	HS9052	1	Motor 1/8 HP, 115V AC, 60 Hz, 1.65A FL, 16RPM
	HS9053	1	Motor 1/8HP 115V 60Hz, 1.9A FL, 60RPM
	HS9054	1	Motor 1/8HP 230V 50/60Hz, 0.75/0.90 FL, 60RPM
13	EL1001	1	Switch, Toggle SPDT , 10A @ 250 Volt, CTR OFF
14	EL1005	1	Switch, Toggle DPDT , 10A @ 250 Volt, CTR OFF
15	HS583E-31	1	Switch assembly with (6) EL1135 micro switches for enclosed style only.
16	HS583-46-6	1	Bellows Rubber Limit Rod
17	HSLABEL-008	1	Label, Warning-Shock Hazard
18	HS612	1	Knob, tri-handle, 1/4-20 insert
19	HS583-45	1	Handle, Front door

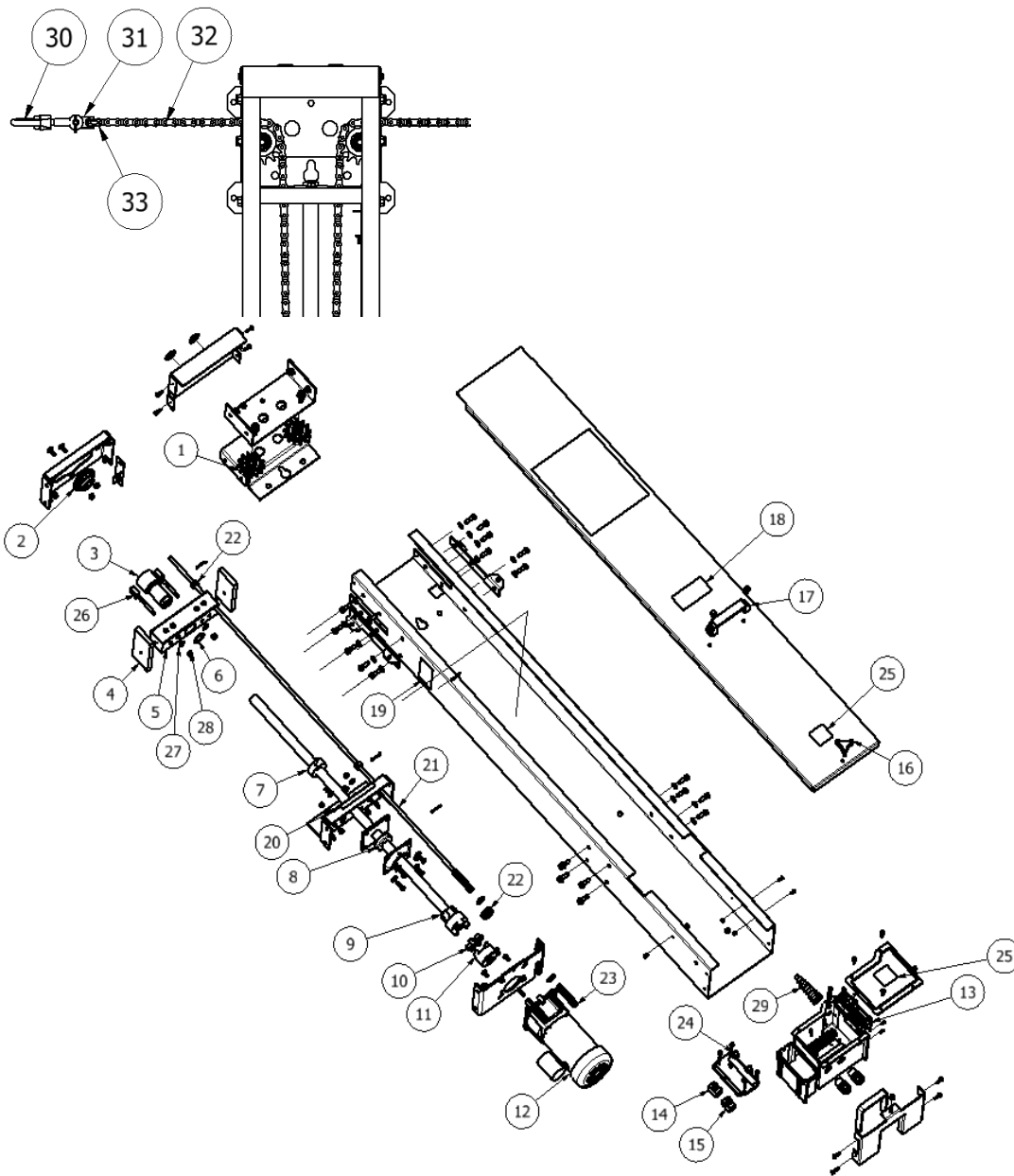


Key	Part#	Qty.	Description
20	HSLABEL-084	1	Label, "Caution Automatic Equipment"
21	HS583-28	2	Collar, steel 3/8" w/ set screw
22	HS583-27-24	1	Limit rod, 24" machine
	HS583-27-36	1	Limit rod, 36" machine
	HS583-27-48	1	Limit rod, 48" machine
23	HSLABEL-083	2	Label, "Warning Moving Parts"
24	HSLABEL-087	1	Label, "Grease Location"
25	HS583-29	2	Spring, limit rod
26	EL1083	2	Rubber cover, toggle switch

HS583 Curtain/Vent Machine (without enclosed switches)

Key	Part#	Qty.	Description
1	HS583-34	3	Pulley, Cast 3-1/2", double ball bearings
2	HS583-42	1	Bearing Flange 1" I.D
3	HS583-8-2A	1	Load Nut, acetal plastic
4	HS583-9	2	Slide, load block
5	HS583-8	1	Load block assy., load nut, cotter pins
6		1	1-1/4" External snap ring & HS583-8-2
7	HS583-41	2	Threaded collar, seal thrust bearing nylon
8	HS583-12	1	Thrust bearing, 1" ID, D9
9	HS583-11A24	1	ACME screw, 24" machine
	HS583-11A36	1	ACME screw, 36" machine
	HS583-11A48	1	ACME screw, 48" machine
10	HS613	1	Spider Gear-spacer Hytrel (white) LO90/LO95
11	LOV38146	1	Coupling Jaw LO95 5/8" bore w/keyway
12	HS9050	1	Motor 1/8 Hp 115V 60 Hz 30RPM AC
13	HS583-31	1	Switch assy. & (6) EL1135 micro switches
14	EL1001	1	Switch, Toggle SPDT , 10A @ 250 Volt, CTR OFF
15	EL1005	1	Switch, Toggle DPDT , 10A @ 250 Volt, CTR OFF
16	HS612	1	Knob, tri-handle, 1/4-20 insert
17	HS583-45	1	Handle, Front door
18	HSLABEL-084	1	Label, "Caution Automatic Equipment"
19	HSLABEL-083	2	Label, "Warning Moving Parts"
20	HSLABEL-087	1	Label, "Grease Location"
21	HS583-27-24	1	Limit rod, 24" machine
	HS583-27-36	1	Limit rod, 36" machine
	HS583-27-48	1	Limit rod, 48" machine
22	HS583-28	2	Collar, steel 3/8" w/ set screw
23	HS583-29	2	Spring, limit rod
24	EL1083	2	Rubber cover, toggle switch
25	HSLABEL-008	1	Label, "Warning-Shock Hazard"





HS583E Curtain/Vent Machine, Sprocket Drive

Key	Part#	Qty.	Description	Key	Part#	Qty.	Description
1	HS583-44	2	Sprocket, 13 Tooth #50, w/ Sealed Ball Bearings	16	HS612	1	Knob, tri-handle, 1/4-20 insert
2	HS583-42	1	Bearing Flange 1" I.D	17	HS583-45	1	Handle, Front door
3	HS583-8-2	1	Load Nut, nylon	18	HSLABEL-084	1	Label, "Caution Automatic Equipment"
4	HS583-9	2	Slide, load block	19	HSLABEL-083	2	Label, "Warning Moving Parts"
5	HS583-8	1	Load block assembly w/ load nut & cotter pins	20	HSLABEL-087	1	Label, "Grease Location"
6		1	1-1/4" External snap ring, supplied with HS583-8-2	21	HS583-27-24	1	Limit rod, 24" machine
7	HS583-41	2	Threaded collar, seal thrust bearing nylon		HS583-27-36	1	Limit rod, 36" machine
8	HS583-12	1	Thrust bearing, 1" ID, D9		HS583-27-48	1	Limit rod, 48" machine
9	HS583-11A24	1	ACME screw, 24" machine	22	HS583-28	2	Collar, steel 3/8" w/ set screw
	HS583-11A36	1	ACME screw, 36" machine	23	HS583-29	2	Spring, limit rod
	HS583-11A48	1	ACME screw, 48" machine	24	EL1083	2	Rubber cover, toggle switch
10	HS613	1	Spider Gear-spacer Hytrel (white) LO90/LO95	25	HSLABEL-008	2	Label, Warning-Shock Hazard
11	LOV38146	1	Coupling Jaw LO95 5/8" bore with keyway	26	HS583-8-5	2	Bolt Adapter #50 Chain Curtain Machine
12	HS9050	1	Motor 1/8 Hp, 115V AC, 60 Hz, 1.9A FL, 28RPM	27	60580	2	Washer Flat SS 5/16"
	HS9051	1	Motor 1/8 Hp 230V AC, 50/60Hz, 0.75/0.90A FL, 24/29 RPM	28	60681	2	Nut Lock 5/16"
	HS9052	1	Motor 1/8 Hp, 115 V AC, 60 Hz, 1.65A FL, 16 RPM	29	HS583-46-6	1	Bellows Rubber Limit Rod
	HS9053	1	Motor 1/8 Hp 115 V 60Hz, 1.9A FL, 60 RPM	30	HS583-55	2	Swivel 3/8" Eye/Jaw Galv
	HS9054	1	Motor 1/8 Hp 230V 50/60Hz, 0.75/0.90 FL, 60 RPM	31	HS583-8-6	2	Adapter #50 Chain
13	HS583E-31	1	Switch assembly with (6) EL1135 micro switches for enclosed style only	32	HS583-70	1	(2) 36" #50 Roller Chain for 24" machine
					HS583-80	1	(2) 48" #50 Roller Chain for 36" machine
14	EL1001	1	Switch, Toggle SPDT, 10A @ 250 Volt, CTR OFF		HS583-90	1	(2) 60" #50 Roller Chain for 48" machine
15	EL1005	1	Switch, Toggle DPDT, 10A @ 250 Volt, CTR OFF	33	EL50RC	4	Master link, #50 chain

AP Repair Parts

*Use of Original Manufacturer's part numbers is for reference only



Fan Blade

- Adjustable on/off run time
- Automatic control with manual override
- Remote sensor

#GTC1-NV Natural vent controller



Gear Motor

- Comes with block and hardware
- 30 RPM
- 110V

#G53-0230 w/ block and hardware

Curtain Controllers

The newly-designed curtain controller is a screwdriven automated curtain machine with an 1/8 Hp, 115 vac, 60 Hz motor in either 15, 30 or 60 RPM. Multidirectional, frame-mounted, head pulleys and latch out assembly are standard on all machines. Thermostat controls, electronic controls and extra bracket kits are sold separately. Comes with a 3,000-lb. lift capacity.



- #GCC3615 15 RPM, 36" travel
- #GCC3630 30 RPM, 36" travel
- #GCC3660 60 RPM, 36" travel
- #GSPRKT3630 30 RPM, 36" travel w/sprocket



Baldor Gear Motor

#G53-0130BA 30 RPM 115V



Bearing

- 1" pillow lock bearing, locking collar included

#16G Bearing, Prev.# G16-0076



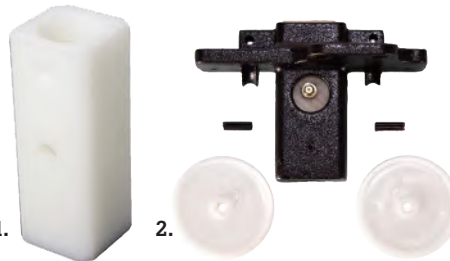
Top Coupler

#G52-0330 Top Drive Coupler w/ welded nut



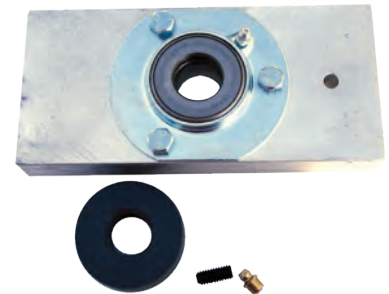
Bottom Coupler

#LOV38146 Lower Drive Coupler w/ lock collar



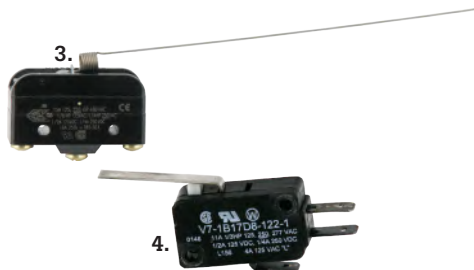
Drive Block

- 1) #HS631 Plastic Insert, OEM# 52-0275
- 2) #G52-0276 Drive Block Assy w/ side wheels



Bearing

#GAC52-0174 Thrust bearing w/ support



Switches

- 3) #EL1126 Whisker switch
- 4) #EL1041 Limit switch



Spider Gear

#HS613 Hytrel spider gear



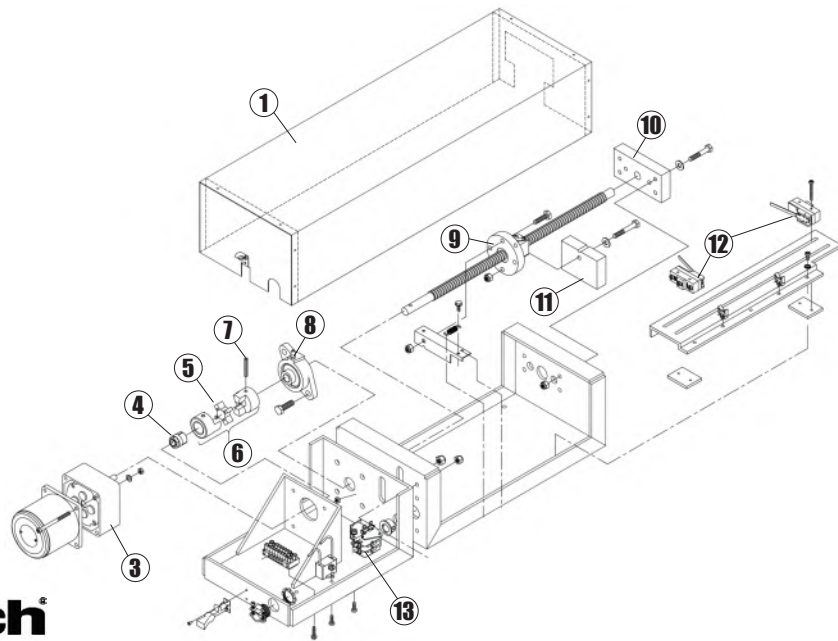
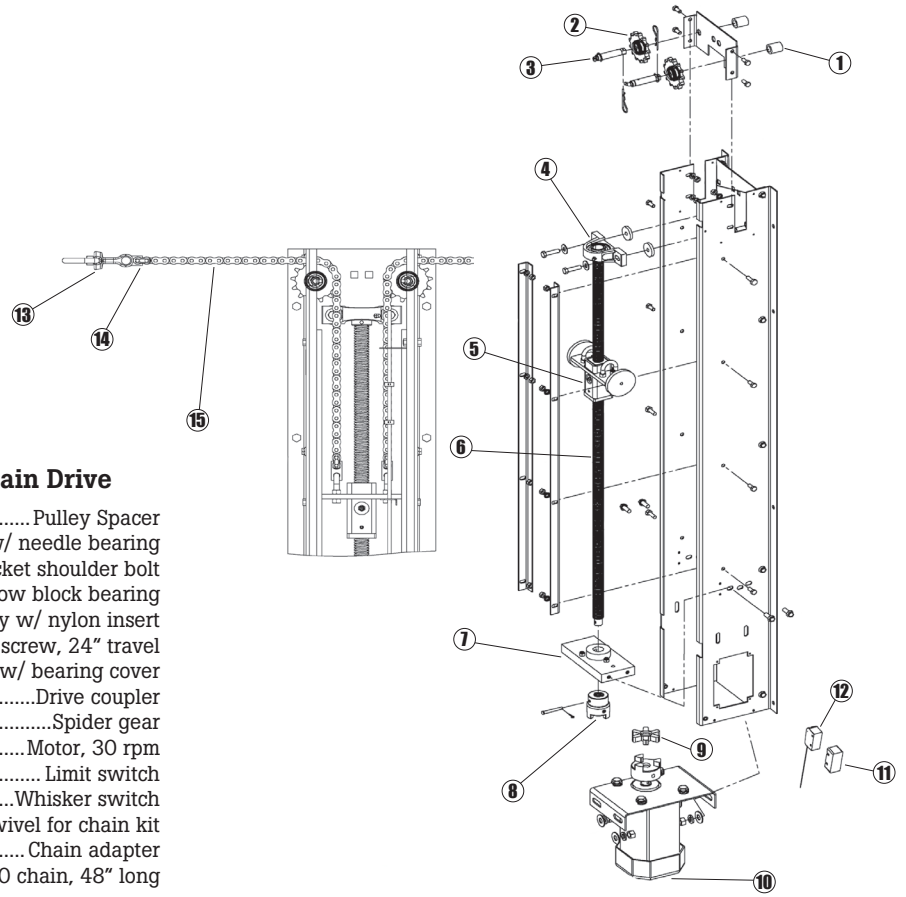
Drive Screw

#G50-0056 36" travel drive screw



Airstream Curtain Controller - Sprocket & Chain Drive

- 1) #G52-0010 Pulley Spacer
- 2) #G52-0100 #50 Sprocket w/ needle bearing
- 3) #G52-0188M Sprocket shoulder bolt
- 4) #16G 1" Pillow block bearing
- 5) #G52-0726 Drive block assembly w/ nylon insert
- 6) #G50-0056 Drive screw, 24" travel
- 7) #GAC52-0174 Bearing kit w/ bearing cover
- 8) #G52-0330 Drive coupler
- 9) #HS613 Spider gear
- 10) #G52-0051 Motor, 30 rpm
- 11) #G1573 Limit switch
- 12) #G1568 Whisker switch
- 13) #G52-0202 Swivel for chain kit
- 14) #G52-0297 Chain adapter
- 15) #G52-0300 #50 chain, 48" long



Aerotech Baffle Actuator

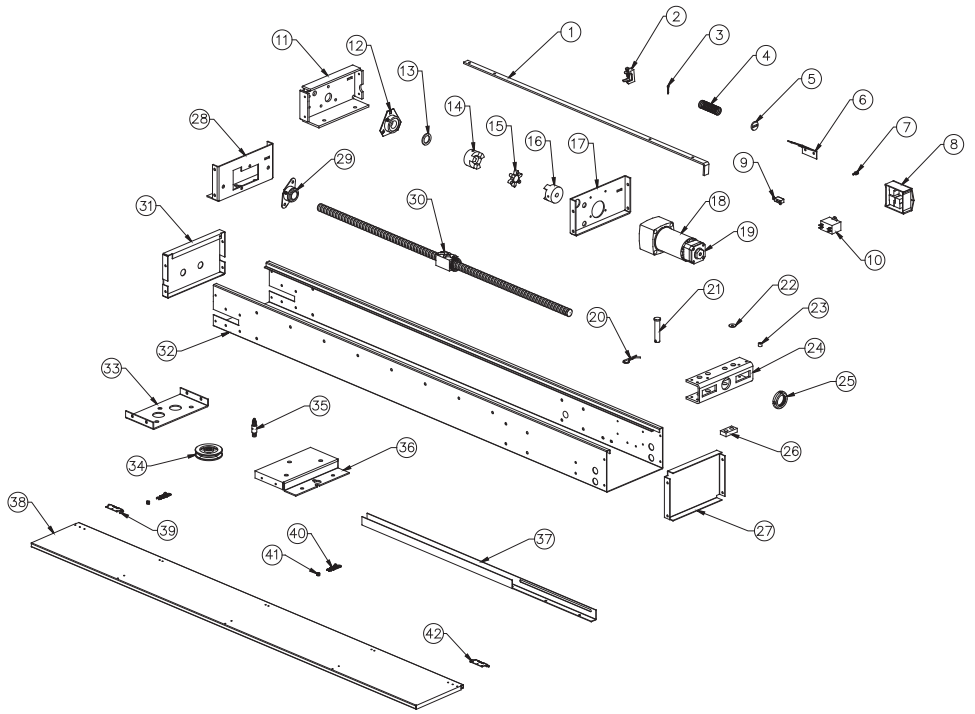
- 1) #AC1333 Cover
- 2) #AC1325C Motor, 120V, w/ capacitor
- 3) #AC1326 Gearhead, 360:1
- 4) #AFP2053 Prop fastener, 5/16" x 3/4" OD
- 5) #AC1345 Spider insert, O70 coupler, rubber
- 6) #AC1328 Complete coupler
- 7) #AKP1010 Slotted spring pin, 1/16" D. x 1.25" L
- 8) #AC1070 2-Bolt bearing flange, 1/2" bore
- 9) #AC1080 Ball screw w/ nut and flange

- 10) #AC1308 Cable guide block
- 11) #AC1307 Ball nut guide
- 12) #EL1052 Snap action switch with EXT spring, 15A
- 13) #EL1018 DPDT relay, 20A, 120 coil

Part number AC1340, Potentiometer Add-On Kit has been discontinued. Use part number APTRLKS, Stand Alone Potentiometer Kit. Please note, APTRLKS is a separate external unit and does not mount internally like the AC1340.

Aerotech Curtain Machine BA4000

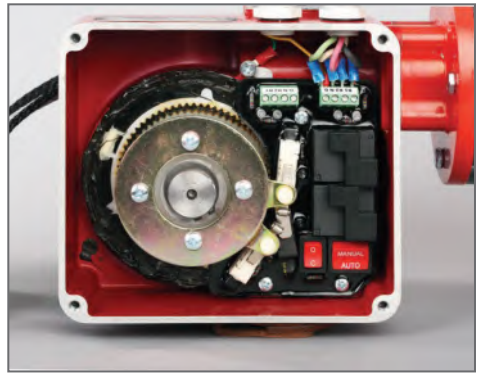
- 1) #AC1955...Bar, limit switch activation, BA4xx2
- #AC1956...Bar, limit switch activation, BA4xx3
- #AC1957...Bar, limit switch activation, BA4xx4
- #AC1959...Bar, limit switch activation, BA4xx5
- 2) #AC1941.....Clamp, limit adjustment
- 3) #KP1052.....Cotter Pin
- 4) #KX1455.....Spring, Compression
- 5) #AC1937.....Retainer, Limit Switch Spring
- 6) #AC1914.....Bracket, Open/Close Switch
- 7) #KE1154...Connector, moisture resistant 14-22 AWG
- 8) #AC1939.....Circuit Board
- 9) #EL1043.....Switch, micro
- 10) #AC1608...Capacitor, 12.5 mfd for BA4000 only
- #AC2503.....Capacitor, 12.5 mfd for BA4500 only
- 11) #AC1903.....Bulkhead, middle
- 12) #AC1905.....Bearing, thrust, 3-bolt flange, 1" I.D.
- 13) #KW4150.....Washer, flat, zinc plated
- 14) #AC1601.....Coupler body, 1" bore, O95
- 15) #AC1602.....Spider Insert, for O90/O95, rubber
- 16) #AC1616.....Coupler body, 1/2" Bore, O95
- 17) #AC1904.....Bulkhead, lower
- 18) #AC1607.....Gearmotor w/ brake, 3 rpm
- #AC1606.....Gearmotor w/ brake, 30 rpm
- 19) #AC193.....Brakes for AC1606/AC1607, round
- 20) #KP1108.....Cotter Hairpin, 1/8" D x 2.5" L
- 21) #KP1252.....Clevis pin, non-greaseable
- 22) #KW3023.....Flat washer, nylon
- 23) #KX1255.....Spacer, nylon
- 24) #AC1901.....Cable puller
- 25) #KN1951.....Locknut for ballnut
- 26) #AC1915.....Guide block, on cable puller, plastic
- 27) #AC1910.....Chassis Cap, bottom end
- 28) #AC1902.....Bulkhead, upper
- 29) #AC1948.....Bearing, 2 bolt flange, 1" I.D.
- 30) #AC1486.....Ball Screw Assembly, BA4xx2



- #AC1487.....Ball Screw Assembly, BA4xx3
- #AC1488.....Ball Screw Assembly, BA4xx4
- #AC1489.....Ball Screw Assembly, BA4xx6
- 31) #AC1909.....Chassis Cap, top end
- 32) #AC1922.....Chassis, BA4xx2
- #AC1923.....Chassis, BA4xx3
- #AC1924.....Chassis, BA4xx4
- #AC1926.....Chassis, BA4xx6
- 33) #AC1908.....Bracket Pulley Cover
- 34) #AC1943.....Pulley, w/ bearing
- 35) #AC1961.....Spindle for 3.5" Pulley 3
- 36) #AC1907.....Bracket, Pulley Base 1
- 37) #AC1916.....Pull Retainer, BA4xx2 1
- #AC1917.....Pull Retainer, BA4xx3 1
- #AC1918.....Pull Retainer, BA4xx4 1
- #AC1920.....Pull Retainer, BA4xx6 1
- 38) #AC1928...Cover, BA4xx2, w/ hinges/latch 1
- #AC1929.....Cover, BA4xx3, w/ hinges/latch 1
- #AC1930.....Cover, BA4xx4, w/ hinges/latch 1
- #AC1932.....Cover, BA4xx6, w/ hinges/latch 1
- 39) #AC1947.....Hinge, cane bolt, RH 1
- 40) #KX1041.....Latch, Slide bar assy, SS Varies
- 41) #KX1042.....Latch, Lock bushing, ZP 1
- 42) #AC1933.....Hinge, cane bolt, LH, ZP

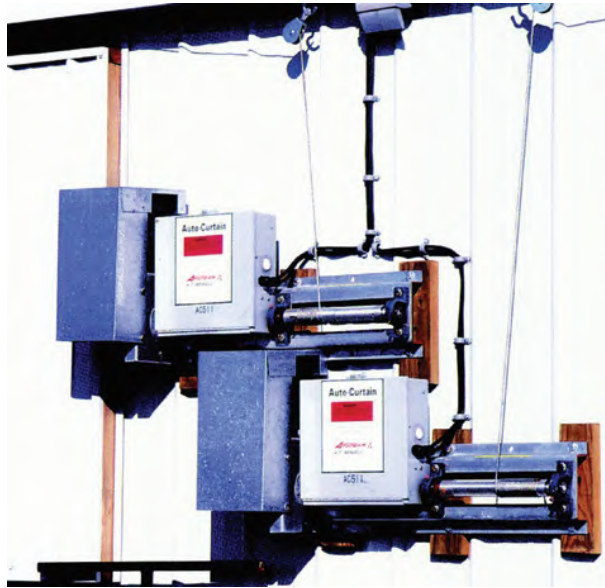

DIVERSIFIED DuraDrive Unique belt-drive curtain and inlet machine utilizes a rugged nylon belt on a rotating drum to reduce breakage and down time.


- Simple accurate limit switches consists of smooth-sliding adjustments pins on friction plates. Simply loosen the four screws and slide the round pins to set. LEDs are lit when limited switch is tripped.
- Internal manual open/close switches eliminate the need for extra power leads.
- Internal safety switch prevents the overriding of the limit switches.
- Features heavy duty construction with 1/3 Hp motor. Totally sealed and lubricated gear box does not require regular maintenance



(Older Style Parts Listed Below)

- #DI710ACA2009.....Curtain Machine
- #DI710AI2009.....Inlet/Vent Machine
- #DI710AGCU.....Replacement Gearbox, limit switches, relay
- #DI710AMR2.....Motor 220 V
- #DI710AMTR.....Motor 110 V
- #DI710ARE1MOD.....Relay Set 110V Modified W/Safety Switches
- #DI710AWDC.....Winch Drum for Curtain Machine
- #DI710AWDI.....Winch Drum for Inlet Machine



GrowerSELECT
1/2 Hp Motor



#HS9013..... 1725 RPM, 115V, 1Ph, 60Hz



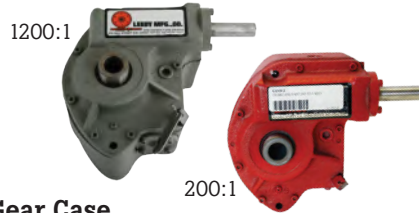
Limit Switch Actuator

#G1126..... Limit switch actuator



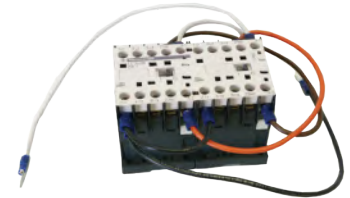
Whisker Switches

#HSAC1568..... Assembly
#EL1126..... Micro switch only



Gear Case

#G1333-12..... Slow 1200:1 Green
#G1333-2..... Fast 200:1 Red



Relay - Reversing

#GAC1558-1K..... w/115 vac coils



Terminal Block

#G1763..... 6 position



Belts

#HSA24..... V-belt, 26"

GrowerSELECT
Raise Off - Lower Switch



#EL1001..... Prev.# G1775



Bearing

#12G..... 3/4" pillow block, Prev.# G1292



Thermostat

#59601..... 2-stage replacement

GrowerSELECT
Limit Switch



#EL1059..... Limit switch



GrowerSELECT

Manual-Auto Switch

#EL0999..... 3 prong



Motor Only

#HS1742..... 1 RPM, 60Hz 110V

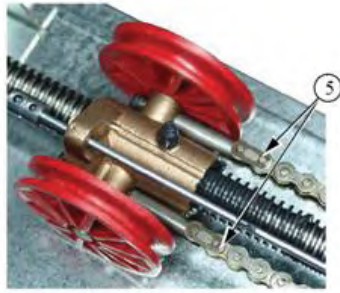
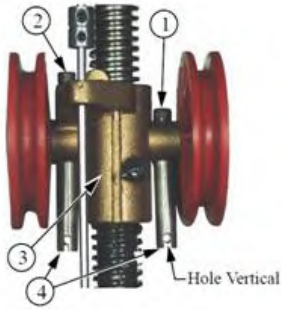


Complete Timer

#G1738..... Timer complete

Chore-Time Linear-Lift™ & ProTerra Winch

*Use of Original Manufacturer's part numbers is for reference only



- 1) #C5083-8 1/4-20 x 1.50 Socked HD Cap Screw
- 2) #23212 1/4-20 x 2.25 Socked HD Cap Screw
- 3) #C41957 Brass Nut
- 4) #AGL44417 Chain Connecting Rod
- 5) #AGL20017 Connecting Link



GrowerSELECT
Motor

#HS9042 1/3 Hp, 1625/1425 RPM,
208-230/220-240 V



Chore-Time Gear Box

#C3261-15 Chore-Time Gear Box



Chore-Time Switch Assembly

#C38904 Chore-Time Switch
#EL1056 SPDT switch replaces OEM# 46324



GrowerSELECT
SOX Spider Spacer

#LOV10621 C3633



Chore-Time Thrust Bearing Bracket

#C35566 Chore-Time Thrust Bearing Bracket



Chore-Time Pulley Wheel

#C41540 Chore-Time Pulley Wheel



Machined Flexible Coupling

#C35944 Machined Flexible Coupling



GrowerSELECT

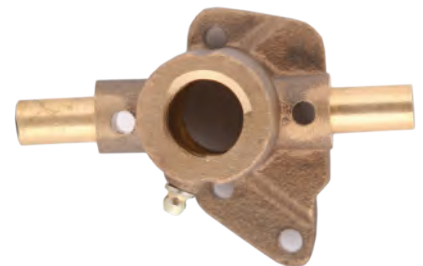
Pinion

#HSP05 Chore-Time OEM# 3429



Chore-Time Drive Screw

#C35945-4 Chore-Time Drive Screw



Chore-Time Nut Assembly

#C41957 Chore-Time Nut Assembly

Hired Hand Repair Parts *Use of Original Manufacturer's part numbers is for reference only



Hired Hand PowerTrak™

- Modular construction for ease of service.
- 5,000 LB. capacity.
- Built-in head bracket with needle-bearing pulleys.
- Channel lock trak-drive system captures load block.
- 15% increase in load block support surface for greater life.
- Easy-adjust springcam limit switch system.
- Convenient hinged spring lock door is easily removed.
- Greater protection from the elements.

#H6602-0236 30 RPM, 36" travel
 #H6602-0244 60 RPM, 36" travel



Power Curtain Brass Load Nut

#H6402-1254 Brass load nut



GrowerSELECT™ Acetal Load Nut

Acetal Load Nut

#HS583-8-2A Acetal Load Nut



PowerTrak™ Nut

#H4650-5049 Complete



GrowerSELECT™ Aluminum Load Block

Aluminum Load Block

#HS574 OEM part #0401-3560



GrowerSELECT™ Wiring Harness

Wiring Harness

#HS6650-5024 Wiring harness
 #HS1902-0158 10' Wiring harness



Temperature Sensor

- Replaces sensor for all Hired-Hand controls

#EL1087 Temperature sensor



GrowerSELECT™ Gear Motor

Gear Motor

- For new style machine, door opens on hinge
- 115V, 60 Hz, 1/8 Hp

#HS9050 30 RPM OEM part #6650-0063
 #HS9052 16 RPM OEM part #6650-0062



GrowerSELECT™ Gear Motor

Gear Motor

- Bison - old style
- Door lifts off

#HS9050-0602 30 RPM, 110V



GrowerSELECT™ Plastic Spider Coupling

Plastic Spider Coupling

#HS613 OEM part #1050-1365



PowerTrak™ Limit Switch Assembly

Limit Switch Assembly

#H6402-0125 9 wire, old style
 #H6450-0205 3 wire, new style



GrowerSELECT™ 5/8" Lovejoy Coupling

5/8" Lovejoy Coupling

#LOV38146 OEM part #1047-1367



Switches

1) #EL1135 Limit switch
 2) #EL1042 Short arm upper safety switch
 3) #EL1039 Lower limit switch



HS653 Negative Pressure Vent Controller

- A) When the pressure reading drops below this limit, the vent machine CLOSES vents to raise the pressure inside. Area between limit pointers, no adjustments are made.
- B) When the pressure reading exceeds this limit, the vent machine OPENS vents to lower the pressure inside.
- C) Low Pressure setting adjustment knob. Clockwise to raise limit, Counter clockwise to lower limit.
- D) High Pressure setting adjustment knob. Clockwise to raise limit, Counter clockwise to lower limit.
- E) Manual OPEN/CLOSE
- F) AUTO/MANUAL Selection



#EL1013

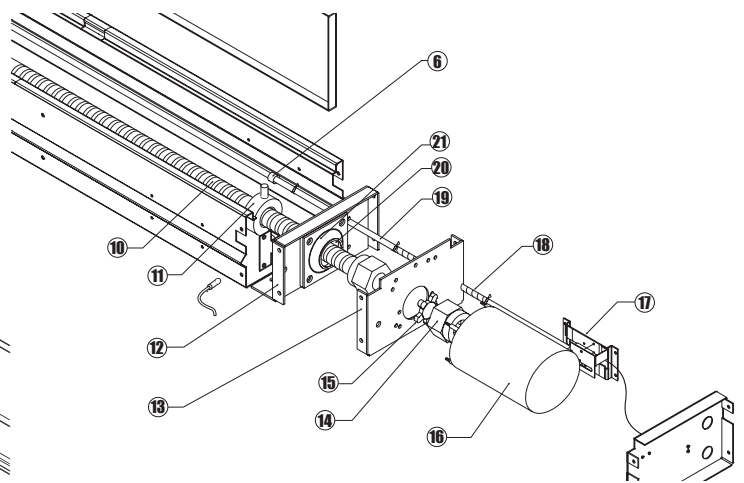
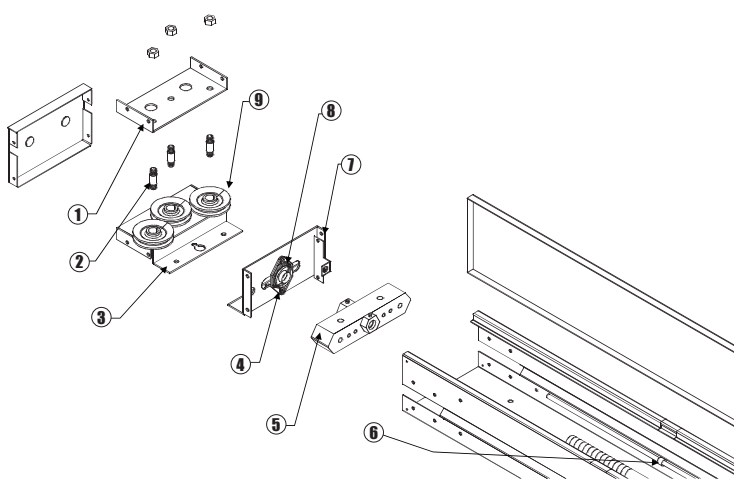


#EL1015



#HS650

- #HS653 Negative Pressure Ventilation, 3 wire, 120 Volt, includes 25' tubing
- #HS650KIT Photohelic gauge
- #EL1013 Cube relay 3PDT, 120V, 11 pin - for 8 wire replaces HH OEM# 3015-1548, for vent controller
- #EL1015 Plug-in relay, DPDT, 120V, 8 pin - for 3 wire replaces HH OEM# 3015-2884, for vent controller



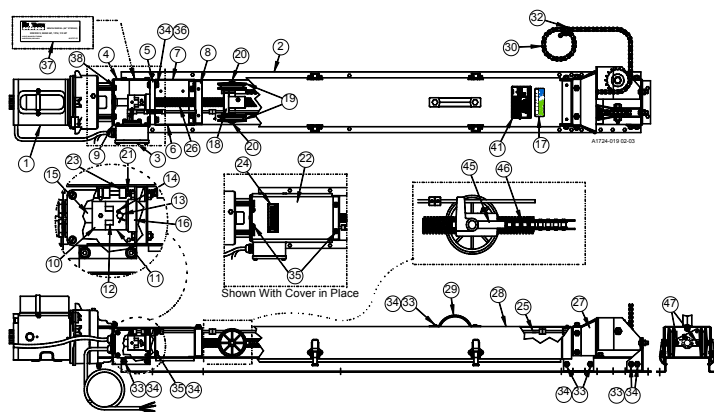
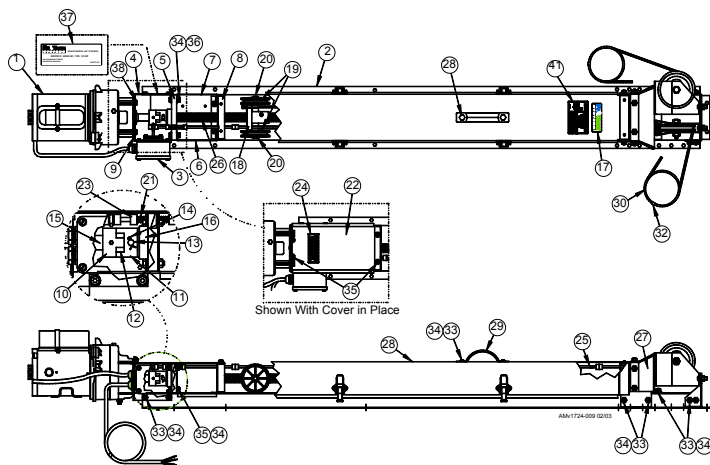
Hired Hand PowerTrak Inlet Machine

- 1) #H0404-5011 Pulley bracket
- 2) #H6450-2881 Pulley shaft
- 3) #H0404-5012 Head bracket
- 4) #H0404-0101 Upper flange brkt
- 5) #H4650-5049 Load block nut
- 6) #HS583-28 3/8" steel collar
- 7) #H0404-5040 Top bearing plate
- 8) #16S 1" insert pillow block bearing
- 9) #G50-0089 Cast pulley
- 10) #H6402-0107 Drive screw, 1'
- 11) #HS583-41 Plastic-threaded collar

- 12) #H0404-5016 Load-bearing bracket
- 13) #H0404-5019 Motor mount
- 14) #LOV38146 5/8" Lovejoy coupling
- 15) #HS613 Spider coupling
- 16) #HS9050 Motor, 30 rpm, 120V
- 17) #H6450-0205 Limit switch assy
- 18) #H1024-0102 Spring, 3" x .04 ID
- 19) #H0201-3129 Limit rod assy, 1'
- 20) #HS583-12 Thrust bearing
- 21) #H0404-5023 Bottom bearing flange
- N/A) #H6450-5500 Sprocket conversion kit

Proterra AGLA47859 Series (Standard)

Proterra AGLA48028 Series (Chain Drive)



Proterra AGLA47859 & AGLA48028 Series Curtain Winch parts

1) #AGL42780.....	115 V Motor	#AGLE1401-46.50.....	36"
#AGL36370.....	230 V Motor	#AGLE1401-58.50.....	48"
2) -.....	Swivel Top Winch Base	#AGLE1401-76.50.....	66"
#AGL47836-26.....	26"	26) -.....	1-5 Threaded Acme Shaft
#AGL47836-36.....	36"	#AGL47856-26.....	26"
#AGL47836-48.....	48"	#AGL47856-36.....	36"
#AGL47836-66.....	66"	#AGL47856-48.....	48"
3) #AGL47875.....	Winch Switch	#AGL47856-66.....	66"
4) #AGL47762.....	L.H. Winch Motor Bracket	27) #AGL47876.....	Swivel Top Pulley Assembly
5) #AGL47763.....	Winch Thrust Bracket	28) -.....	Winch Cover Assembly
6) #AGL47771-2.....	R.H. Winch Panel	#AGL47873-26.....	26"
7) #AGL47771-1.....	L.H. Winch Panel	#AGL47873-36.....	36"
8) #AGL47772.....	Winch Swivel Partition	#AGL47873-48.....	48"
9) #AGL47834.....	Winch Cover Bracket	#AGL47873-66.....	66"
10) #AGL36363-2.....	Flexible Type L Coupling	29) #AGL3-12194.....	Handle
11) #AGL35944.....	Flexible (Mach.) Coupling	30) #AGL47658.....	25' Winch Cable
12) #AGL36333.....	"SOX" Spider Spacer	30) -.....	Drive Chain
13) #AGL36466-1.....	5/16" x 2" Clevis Pin	#AGL21045-14.....	26"
14) #AGL2663.....	125" x .75" Cotter Pin	#AGL21045-15.....	36"
15) #AGL2112-1.....	3/16" x 1" Square Key	31) #AGL42728.....	8-32 Set Screw
16) #AGL36397.....	Industrial Thrust Bearing	32) #AGL6635.....	Cable Tie
17) #AGL2525-68.....	ProTerra Decal	33) #AGL8282.....	5/16-18 x .625" Carriage Bolt
18) #AGL47759.....	Machined Winch Nut	34) #AGL8490.....	5/16-18 Hex Flange Nut
19) #AGL2503.....	Red Pulley Wheel	35) #AGL24208.....	1/4-20 Hex Flange Nut
20) #AGL41525.....	Retainer Ring	36) #AGL2150.....	5/16 x 18 x 1.25" Bolt
21) #AGL49813.....	Compression Spring	37) #Varies.....	Winch Decal
22) #AGL47835-1.....	Lower Winch Cover	38) #AGL1839.....	5/16 - 18 x .50 Bolt
23) #AGL41857.....	Set Collar	41) #AGL2527-10.....	Danger Decal
24) #AGL2529-634.....	Grease Decal	45) #AGL44417.....	Chain Connecting Rod
25) -.....	Winch Switch Rod	46) #AGL20017.....	Connecting Link (#40)
#AGLE1401-36.50.....	26"	47) #AGL5083-2.....	1/4-20 x 2-1/4" SH Cap Screw

Complete Units

CABLE:

#AGLA47859-2230.....	Machine/Linear Lift w/ Swivel Pulleys/Cable 26" 30RPM Proterra/CTB 230 Volt
#AGLA47859-3160.....	Machine/ Linear Lift w/ Swivel Pulleys/ Cable 36" 60RPM Proterra/CTB 115 volt
#AGLA47859-4160.....	Machine/Linear Lift w/ Swivel Pulleys/ Cable 48" 60RPM Proterra/CTB 115 volt
#AGLA47859-4260.....	Machine/Linear Lift w/ Swivel Pulleys/ Cable 48" 60RPM Proterra/CTB 230 volt

CHAIN:

#AGLA48028-2230.....	26" Chain and Sprocket 30 RPM Vent Machine
#AGLA48028-4160.....	48" Chain and Sprocket 60 RPM Curtain Machine

Agri Ventilation Systems Vent/Curtain Machine



B - parts for Ball Screw Machine

- #AVDR-AN-1802 Drive Standard 18" Dr AN 1802
- #AVDR-AN-4000 Drive Standard 4' Dr AN 4000
- #AVDR-AN-5002 Drive Machine In Line 5' 107 RPM
- #AVDR-AN-6000 Drive 6' (68") Travel Dr AN 6000
- #AVDR-1800 Vent Machine 18" w/o motor
- #AVDR-4002 Vent Machine 48" w/o motor

A - parts for Actuator Machine



(B) Ball Nut Assembly

(for Mini Ball Screw Machine)

- #AVBS-BN-1000 Ball Nut Assembly



(A) Dipstick Oil Plug

- #AVHW-OP-1000 Dipstick Oil Plug



(A) Switch Assembly

- #AVDR-BX-1000 Complete



(A) Inside Replacement Drives

- #AVDR-00-1801 18"
- #AVDR-00-3100 3'
- #AVDR-00-4100 4'
- #AVDR-00-5100 5'
- #AVDR-00-6100 6'



(A) Motor 1/4 Hp

- #AVEP-FR-0107 1/4 Hp 107 RPM



(A & B) Motor 1/6 Hp

- #AVEP-FR-0040 1/6 Hp 40 RPM



(A) Collar with Thumb Screw

- #AVHW-LC-1000 w/ Thumb Screw



(A) Limit Switch

• Fail-safe limit switch for assembly box

- #EL1042 Limit Switch
- #EL1043 Limit switch
- #AVDR-0-B1110 Spring for switch



(A & B) Love Joy Coupler

- #LOV10688 5/8" Bore
- #AVDR-LJ-0012 1/2" Bore



(A & B) Spider Gear

- #AVDR-LJ-000U for Love Joy Coupler



(B) Relay

- #EL1015 for Mini Ball Screw Machine



(B) Run Capacitor

(for Mini Ball Screw Machine)

- #AVEP-CP-0006 Capacitor



(B) Electromagnetic Brake

- #AVBS-BR-0090 for ball screw