



54" X-Brace Ventilation Fan



High S.F. Motors

Stand up to harsh environments and varying voltage. Full 56 frame motors.



Efficient Shutters

Airfoil PVC blades feature full-length spring steel rods instead of plastic pins – locked into a heavy PVC frame.



Rigid X-Brace

Maximizes support to minimize performance robbing vibrations.

Rugged Housings

Molded resin fiberglass with UV stabilizers, marine grade gel-coat and smooth interior and exterior finish.



Increased Performance

Poly Cone.



Flat Performance Curve

Fans integrate proprietary stainless steel props configured for peak air delivery at typical static pressures.

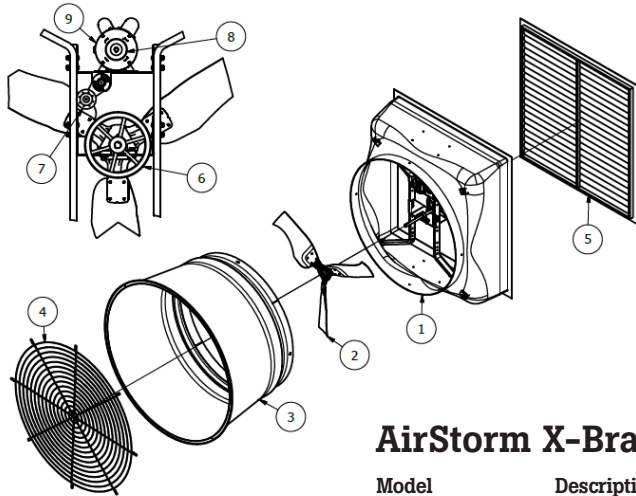
Heavy-duty Guards

Baked PVC coated wire.



Self-adjusting Belt Tensioner

Automatically maintains correct belt tightness. Link style belt improves performance and reduces replacement cost. 1" shaft with permanently lubricated ball bearings prevent damage from dust contamination.



AS-54XEBDLP Parts List

Item #	Description
1) AS-54101	Housing, 54" Fiberglass
2) HS900-54FA	Prop 54" 3-Blade WS Fan
3) AS-54206	Cone, Poly 54" Air Storm 32" Deep
4) HS902-3	54" Fan Prop Guard 68" Cone MD
5) HS901-6A	Shutter PVC 57" x 59"
6) PAK1041	Pulley AK104-1
7) HS903-3	Tensioner Rotary Assembly with Splash Guards
8) PAK3458	Pulley AK34-5/8
9) HS9014C	Motor 1.5 HP 1725 RPM 56 FR 1 PH 50/60Hz

AirStorm X-Brace 54" Fan

Model	Description	Shutter	Rough Opening	RPM	Drive	Speed	HP
AS-54XEBDLP	54", w/o cone	Plastic	58" x 60.5"	1725	Belt	Single	1-1/2
AS-54XEBDLP3	54", 3-PH, w/o cone	Plastic	58" x 60.5"	1725	Belt	Single	1-1/2 (3 Ph)
AS-54XEBDLP-V	54" w/VFD, w/o cone	Plastic	58" x 60.5"	1725	Belt	Single	1-1/2 (3 Ph)
AS-54XEBDLP-HE	High Efficiency Conversion Kit (includes Pulley & Power Belt)						
AS-54206	54" Poly Cone						

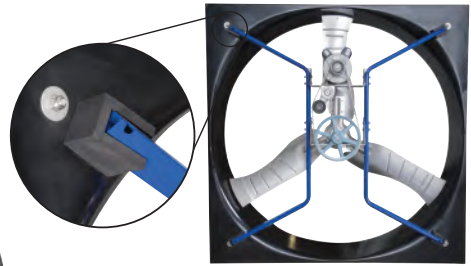


MODEL	BESS TEST	0.00" SP		0.05" SP		.10" SP		.15" SP		
		CFM	CFM/WATT	CFM	CFM/WATT	CFM	CFM/WATT	CFM	CFM/WATT	
AS-54XEBDLP	17263	30,900	20.8	29,400	19.1	27,600	17.4	25,600	15.7	
AS-54XEBDLP-HE	17265	28,500	23.2	26,700	20.9	24,400	18.6	21,700	16.1	
AS-54XEBDLP	17264*	28,100	18	26,400	16.5	24,600	15	22,700	13.6	
AS-54XEBDLP3	17266	30,900	21.5	29,400	19.7	27,700	18.0	25,600	16.2	
AS-54XEBDLP-V	Refer to page 152									

*Performance shown with no cone

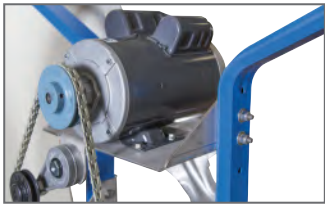


57" X-Brace Ventilation Fan



Rigid X-Brace Supports

Innovative X-Brace design moves the anchor points of the support arms to the housing corners for maximum stability. The support arms are manufactured from aluminum tube with a blue epoxy coating for increased corrosion protection and incorporate a triangular edge profile to reduce wind turbulence. Rubber corner mounts cushion the fiberglass housing from fan vibrations.



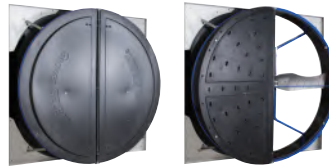
Efficient Drive System

Powerful High Service Factor 1.5 HP motor. Self-adjusting tensioner automatically keeps the 1/2" link belt at the proper tightness for maximum efficiency.



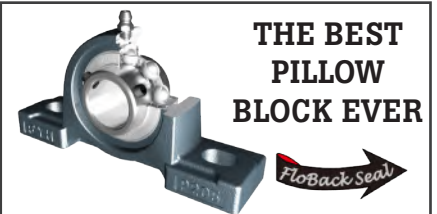
Optional Mounting Kit (#AS-57FHM)

Stainless steel kit adapts fan to a through-wall installation.



Poly Butterfly Shutter

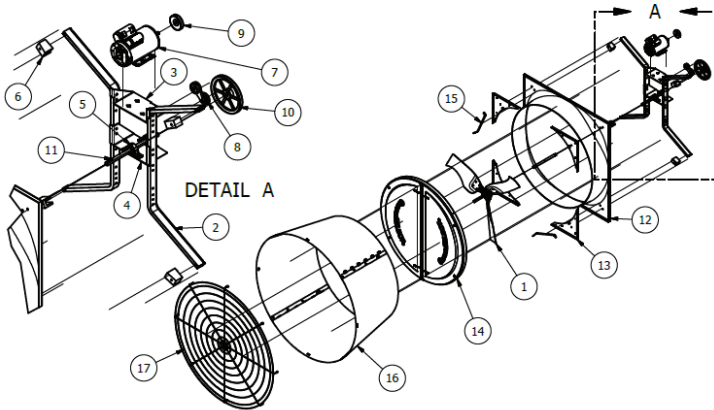
Corrosion resistant poly dampers seal tight with magnetic closures and dual springs. An aluminum damper ring maintains maximum stability in any temperature extreme.



THE BEST PILLOW BLOCK EVER

Improved Bearing Life

New solid base bearing housing increases mounting stability, reducing vibration significantly. The new bearing also includes a double-lip FloBack seal to improve lubrication and add additional protection against contamination to reduce maintenance. Fan features Stainless Steel motor and bearing mounting plates.



AS-57EBDBP Parts List

Item #	Description
1) HS900-57F	Prop 3 Blade 56.25" Diameter
2) AS-54X115	Assembly, Upright, Fan 54" Aluminum X Frame
3) AS-54X110	Mount, Motor, Stainless, 54" X Frame
4) AS-54X118	Plate, Support Shaft ASM
5) UCP20516G5	Bearing 1" Pillow Block Standard 2 Set Screws
6) AS-54X312	Block, Isolation, Interior Air Storm X Frame
7) HS9019	Motor 1.5HP 1725 RPM 50/60 Hz 1 PH 208-230V
8) HS903-3	Tensioner Rotary Assembly with Splash Guards
9) PAK3058	Pulley AK30-5/8
10) PAK991	Pulley AK99-1
11) SHAFT1-1800T	Shaft 1" x 18" (1/4 x 1/8 x 18 Thru Keyed)
12) AS-57309	Venturi, Fiberglass Panel 57"
13) AS-57319	Support Plate, Corner 57" FBG Fan
14) HS901-57	Assembly, Butterfly 57" Fan
15) AS-57320	Bracket, Cone Support 57" Fan
16) AS-57305P	Panel Cone 57" Poly Black
17) HS902-57E	57" Fan Prop Exit Guard

AirStorm X-Brace 57" Fan

Model	Description	Shutter	Rough Opening	RPM	Drive	Speed	HP
AS-57EBDBP	SS Blade & Hdwr. w/cone	Plastic	57" x 57"	1725	Belt	Single	1-1/2
AS-57EBDBP3	SS Blade & Hdwr. 3-PH w/cone	Plastic	57" x 57"	1725	Belt	Single	2 (3 Ph)
AS-57EBDBP-V	SS w/VFD drive & cone	Plastic	57" x 57"	1725	Belt	Single	2 (3 Ph)
AS-57EBDBPG	Galv. Blade & Hdwr. w/cone	Plastic	57" x 57"	1725	Belt	Single	1-1/2
AS-57EBDBPG3	Galv. Blade & Hdwr. 3-PH w/cone	Plastic	57" x 57"	1725	Belt	Single	2 (3 Ph)
AS-57EBDBPG-V	Galv w/VFD drive & cone	Plastic	57" x 57"	1725	Belt	Single	2 (3 Ph)
AS-57EBDBP-HE	High Efficiency Conversion Kit (includes Pulley & Power Belt)						

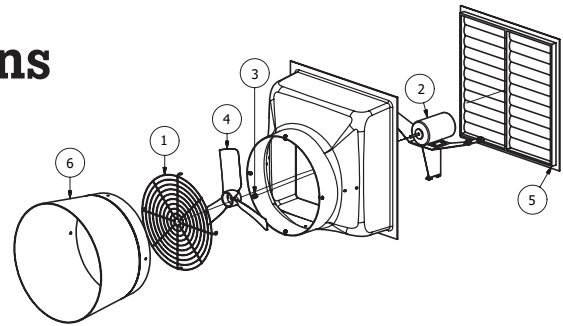


**Hog Slat test chamber

MODEL	BESS TEST	0.00" SP		0.05" SP		.10" SP		.15" SP	
		CFM	CFM/WATT	CFM	CFM/WATT	CFM	CFM/WATT	CFM	CFM/WATT
AS-57EBDBP	17261	33,000	24.9	31,300	22.2	29,100	19.8	26,400	17.3
AS-57EBDBP-HE	17262	32,000	26.2	29,900	23.3	27,400	20.5	24,400	17.6
AS-57EBDBP-V	HS-00709**	32,613	23.3	29,300	20.7	26,534	18.1	23,796	12.5



Fiberglass Ventilation Fans



AS-14 Parts List

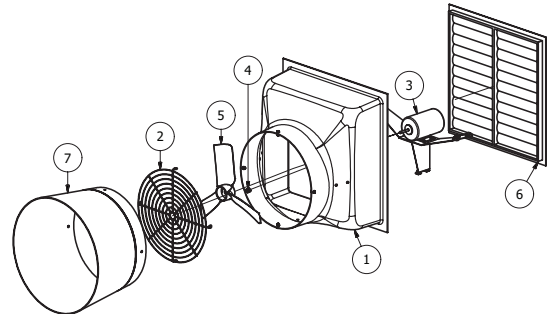
Item #	Description
1) HS902-14	Guard Fan 14"
2) HS9007	Motor 1/4 HP 1725 RPM 115/230V 50/60 Hz
3) HS903-1	Nut Transtorque 1/2" w/ 7/8" Hex Nut Keyless Bushing
4) HS900-14A	Prop 14" Fiberglass
5) 10110A	Shutter Pvc 19" X 19"
6) AS-14206	Cone 14" Poly

AirStorm 14" Fan

Model	Description	Shutter	Rough Opening	RPM	Drive	Speed	HP
AS-14EDDLP	14" w/o Cone	Plastic	20" x 20"	1725	Direct	Variable	1/4
AS-14206	14" Poly Cone						

Model	0.00" SP		0.05" SP		.10" SP		.15" SP	
	CFM	CFM/WATT	CFM	CFM/WATT	CFM	CFM/WATT	CFM	CFM/WATT
AS-14EDDLP*	2300	10.0	2200	9.5	2000	8.8	1800	7.9
w/o Cone*	2000	8.7	1900	8.2	1700	7.5	1500	6.6

*Test from Hog Slat performance chamber



AS-18 Parts List

Item #	Description
1) AS-18101	Housing, 18" Fiberglass
2) HS902-18	Guard Fan, 18"
3) HS9008	Motor 1/3 Hp 1725 RPM Var Sp 115/230
4) HS903-1	Transtorque 1/2" w/ 7/8" Hex Nut Keyless Bushing
5) HS900-18A	Prop 18" Fiberglass
6) 10115-5	Shutter PVC 24-1/2" X 24-1/2" Single Door
7) AS-18206	Cone, 18" Poly

AirStorm 18" Fan

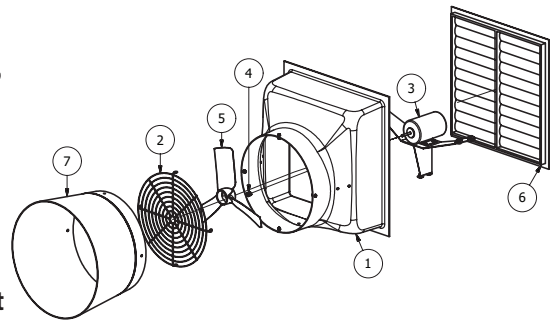
Model	Description	Shutter	Rough Opening	RPM	Drive	Speed	HP
AS-18EDDLP	18" w/o Cone	Plastic	25.5" x 26"	1725	Direct	Variable	1/3
AS-18EDDLP-V	18" w/VFD drive w/o cone	Plastic	25.5" x 26"	1725	Direct	Single	1/3 (3 Ph)
AS-18EDDLP-L	18" w/o VFD drive & cone	Plastic	25.5" x 26"	1725	Direct	Single	1/3 (3 Ph)
AS-18206	18" Poly Cone						

Model	Bess Test	0.00" SP		0.05" SP		.10" SP		.15" SP	
		CFM	CFM/WATT	CFM	CFM/WATT	CFM	CFM/WATT	CFM	CFM/WATT
AS-18EDDLP	15684	4,980	11.7	4,780	11.0	4,580	10.3	4,350	9.7
	15685*	4,490	10.0	4,310	9.5	4,120	9.0	3,920	8.5
AS-18EDDLP-V	18232	4710	11.1	4490	10.5	4290	9.9	3920	8.5

*Performance shown with no cone



Fiberglass Ventilation Fans



AS-24 Parts List

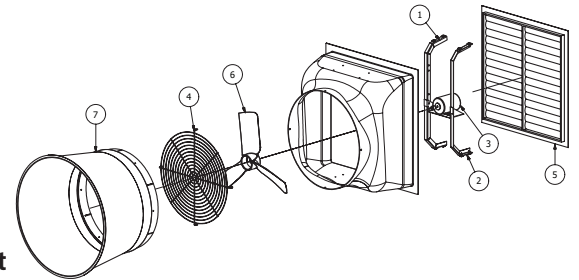
Item #	Description
1) #AS-24101	Housing, 24" fiberglass
2) #HSFG-24W	Guard Fan 24" White Hog Slat
3) #HS9006A	Motor 1/3 Hp 1075 RPM Var Sp 115/230
4) #HS903-1	Transtorque 1/2" w/ 7/8" Hex Nut Keyless Bushing
5) #HS900-24A	Prop 24" Fiberglass
6) #HS901-3	Shutter PVC 32-1/2" x 32-1/2" Single Door
7) #AS-24106	Cone, 24" poly

AirStorm 24" Fan

Model	Description	Shutter	Rough Opening	RPM	Drive	Speed	HP
AS-24EDDLP	24" w/o cone	Plastic	34.5" x 34.5"	1075	Direct	Variable	1/3
AS-24EDDLP3	24", 3-PH w/o cone	Plastic	34.5" x 34.5"	1075	Direct	Single	1/3 (3 Ph)
AS-24EDDLP-V	24", w/VFD drive w/o cone	Plastic	34.5" x 34.5"	1075	Direct	Single	1/3 (3 Ph)
AS-24EDDLP-L	24", w/o VFD drive & cone	Plastic	34.5" x 34.5"	1075	Direct	Single	1/3 (3 Ph)
AS-24206	24" Poly Cone						

Model	Bess Test	0.00" SP		0.05" SP		.10" SP		.15" SP	
		CFM	CFM/WATT	CFM	CFM/WATT	CFM	CFM/WATT	CFM	CFM/WATT
AS-24EDDLP	15207	7,400	16.8	6990	15.2	6,620	13.9	6,200	12.6
	15209*	6,480	13.4	6,110	12.3	5,670	11.2	5,170	10.1
AS-24EDDLP3	17302	7240	16.6	6880	15.1	6550	13.9	6200	12.9
AS-24EDDLP-V	18234	7050	15.0	6820	14.1	6540	13.2	6250	12.4

*Performance shown with no cone



AS-36 Parts List

Item #	Description
1) AS-36115	Support, Interior Right 36" Stainless
2) AS-36116	Support, Interior Left 36" Stainless
3) HS9009A	Motor 1/2 Hp 850 RPM Variable Speed 115/230V APP-36
4) HS902-7	Guard Fan 36" White Hog Slat
5) 101204	Shutter PVC 42" X 42"
6) HS900-36E	Prop 36" Fiberglass
7) AS-24206	Cone, Poly 36" Air Storm 32" Deep

AirStorm 36" Fan

Model	Description	Shutter	Rough Opening	RPM	Drive	Speed	HP
AS-36EDDLPA	36" w/o cone	Plastic	43.5" x 43.5"	850	Direct	Variable	1/2
AS-36EDDLPA3	36", 3-PH w/o cone	Plastic	43.5" x 43.5"	850	Direct	Single	1/2 (3 Ph)
AS-36EDDLP-V	36", w/VFD drive w/o cone	Plastic	43.5" x 43.5"	850	Direct	Single	1/2 (3 Ph)
AS-36EDDLP-L	36", w/o VFD drive & cone	Plastic	43.5" x 43.5"	850	Direct	Single	1/2 (3 Ph)
AS-36206	36" Poly Cone						

Model	Bess Test	0.00" SP		0.05" SP		.10" SP		.15" SP	
		CFM	CFM/WATT	CFM	CFM/WATT	CFM	CFM/WATT	CFM	CFM/WATT
AS-36EDDLP	15556	11,550	20.6	10,780	18.4	9,940	16.4	8,900	14.2
	15557*	10,510	17.7	9,790	16.0	8,980	14.4	8,150	12.8
AS-36EDDLPA3	17283	11,750	20.3	11010	18.5	10210	16.6	9460	15.0
AS-36EDDLP-V	18226	12,420	21.5	11730	19.4	10830	18.0	9830	15.1

*Performance shown with no cone

VFD Improves Performance of Variable Speed Fans



VFD Control

Controller converts low voltage from house controller and sends a related signal to a fan motor in hertz. Allows for more accurate control of variable speed and cfm output.

- 240 Volt
- Waterproof NEMA 4X enclosure
- Manual override

- #HSFI-1001 1 Hp
- #HSFI-1002 2 Hp

What is a VFD fan?

VFD or Variable-Frequency Drive is a type of adjustable speed drive used to control motor speed and torque by varying motor input frequency or hertz. Fan motors controlled by VFD are inverter rated, three-phase.

How does VFD control speed?

An external controller (HSFI-1002) receives a 0 to 10-volt signal from the house controller and sends a corresponding signal to the fan motor in frequency or hertz.

What are the advantages of VFD compared to using a triac and voltage regulation to control variable speed fans?

1. Up to 60% more efficient- Slowing a VFD fan down also reduces its energy consumption, unlike voltage regulation.
2. Longer motor life - VFD motors run cooler since the excessive energy normally lost using a triac is not converted to heat.
3. Fewer fans-The lower cfm rates possible with VFD fans mean larger summer fans can also be used for winter minimum ventilation rates.

Converting existing fan to VFD

Most fans can be changed to VFD by replacing the motor with an inverter rated, three-phase motor and adding a VFD controller.

		CFM @ .05" Static Pressure			
		60Hz	52Hz	44Hz	36Hz
AS-18EDDLP-V	18" VFD	4490	3910	3230	2380
AS -24EDDLP-V	24" VFD	6820	5980	5010	3810
AS-36EDDLP-V	36" VFD	11730	9870	7710	5360
AS-54XEBDLP-V	54" VFD	28900	24900	18900	12700
AS-57EBDBP-V	57" VFD	29300	25800	22400	17400



Good ventilation is critical in keeping your livestock and poultry healthy and productive. Farmstead shutter fans are a cost-effective choice for ventilating greenhouses, coops, pig barns and shops.

Farmstead shutter fans ship fully assembled, ready to install right out of the box.

Features include:

- Pre-wired with a 10' cordset for 115 volts
- Variable or single speed (Control not included.)
- 3-bladed aluminum prop
- Aluminum shutter with tie bar to connect vanes, reducing flapping in high winds
- Interior fan guard



Item#	Size	HP	Amps	cfm/.05	Rough Opening
#VES12C	12"	1/10	1	880	12-1/2" x 12-1/2"
#VES161C	16"	1/10	1	1300	16-1/2" x 16-1/2"
#VES20C	20"	1/3	3.5	2920	20-1/2" x 20-1/2"
#VES24C	24"	1/2	4.8	4310	24-1/2" x 24-1/2"



Variable Speed Control

Infinite speed control rated at 6 amps at 120 volts. Mounts in standard 2" gang box, not included.

#NE105F..... Variable Speed Control

Single Stage Thermostat

Single stage thermostat designed for ventilation and heating applications in high moisture environments or outdoor use; NEC 547 compliant. NEMA 4X compliant enclosure with special O-ring cover seal for an improved barrier seal.

- Switch action: SPDT
- Range: 30 to 110° F
- Differential: 3.5° F
- Dimensions: (LxWxH) 9" x 4" x 3"



#HS596001 Single Stage Thermostat



Single Sidewall Inlet

- 5-1/2" x 22-1/2"
- 430 cfm
- Self-adjusting inlet

#HSI200..... Single Sidewall Inlet

Aerotech VX Series & Advantage Fans



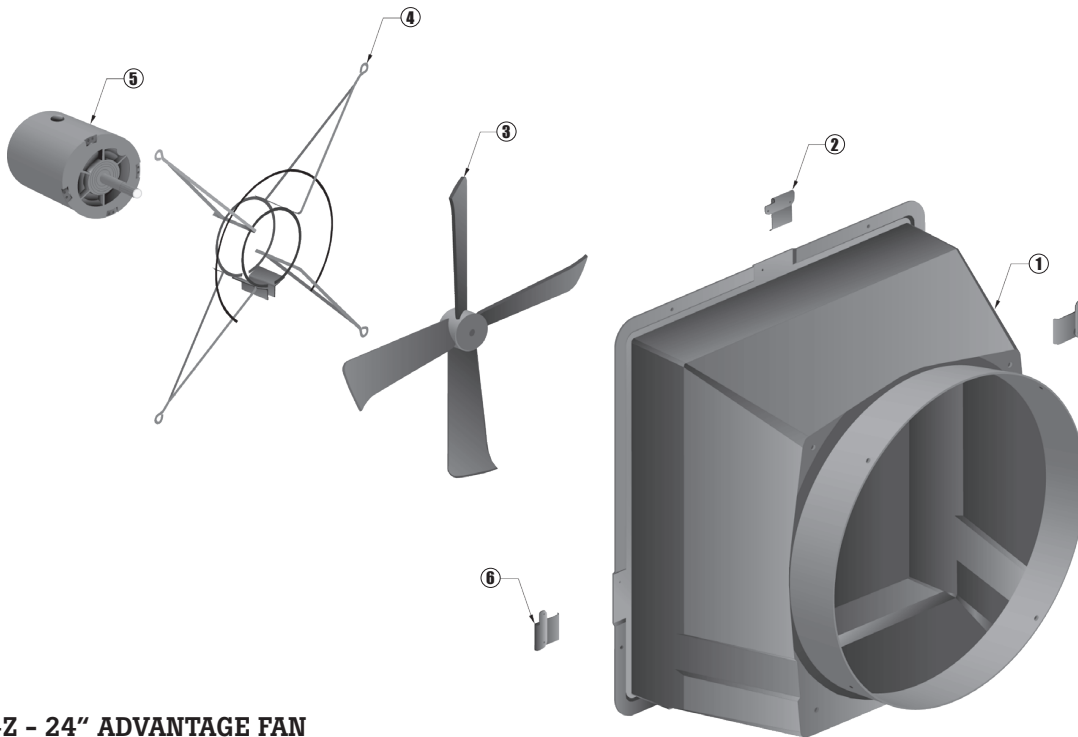
- Fiberglass housing with roto-molded poly discharge cone
- Cast aluminum airfoil prop
- Powder coated motor support and outlet guard
- Stainless steel hardware
- PVC shutters

Aerotech VX Series Fans 9" - 26"

Item#	Description	Hp	Drive	CFM/.05	CFM/.10	R.O.WxH
#AVX14F1CP	14" fan w/ shutter and cone	1/8	Direct/VR	1,910	1,790	17-1/2" x 17-1/2"
#AVX16F1CP	16" fan w/ shutter and cone	1/4	Direct/VR	3,100	2,900	22-1/2" x 22-1/2"
#AVX18F1CP	18" fan w/ shutter and cone	1/3	Direct/VR	4,300	4,120	22-1/2" x 22-1/2"
#AVX24F1CP	24" fan w/ shutter and cone	1/3	Direct/VR	6,090	5,740	28-1/2" x 28-1/2"
#AVX26F1CP	26" fan w/ shutter and cone	1/3	Direct/VR	7,800	6,740	30-1/4" x 30-1/4"

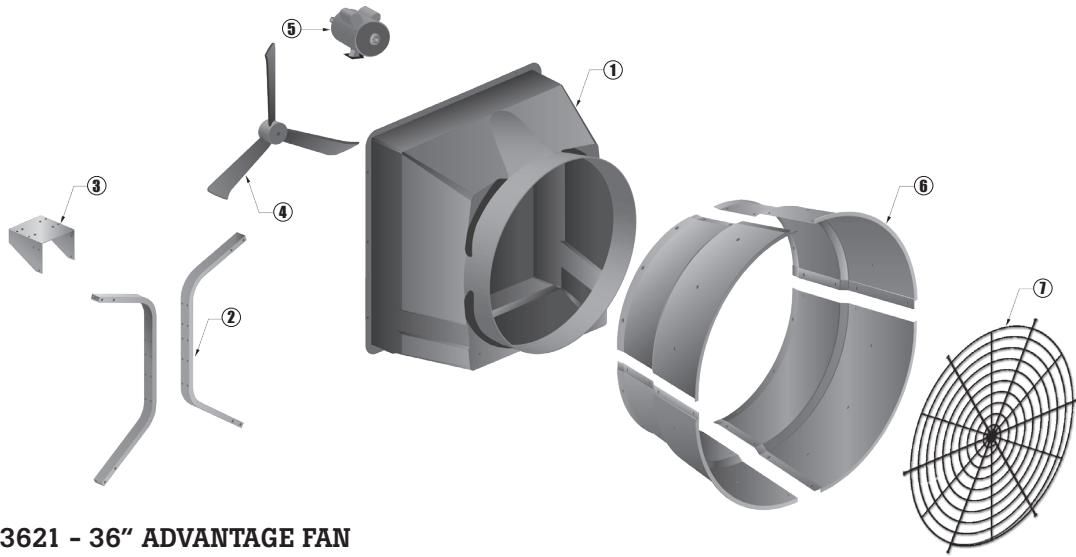
Aerotech Advantage Fans 36" - 48"

Item#	Description	Hp	Drive	CFM/.05	CFM/.10	R.O.WxH
#AT36Z1P	Fan 36" Advantage Complete w/ Shutter Direct Drive	1/2	Direct/VR	10,100	9,250	43" X 43"
#AT36S1	36" fan w/ shutter	1/2	Belt/SS	10,800	9,950	43" X 43"
#AT36S1CP	Fan 36" Advantage w/Cone, Shutter Belt Drive	1/2	Belt/SS	11,800	10,880	
#AT48Z1	48" fan w/ shutter	1	Belt/SS	20,800	19,400	55" x 55"
#AT48Z1CP	Fan 48" Advantage Complete	1	Belt/SS	23,500	22,000	
#AT48S1CP	48" Belt Drive Advantage w/Cone and Shutter	1-1/2	Belt/SS	27,500	24,800	



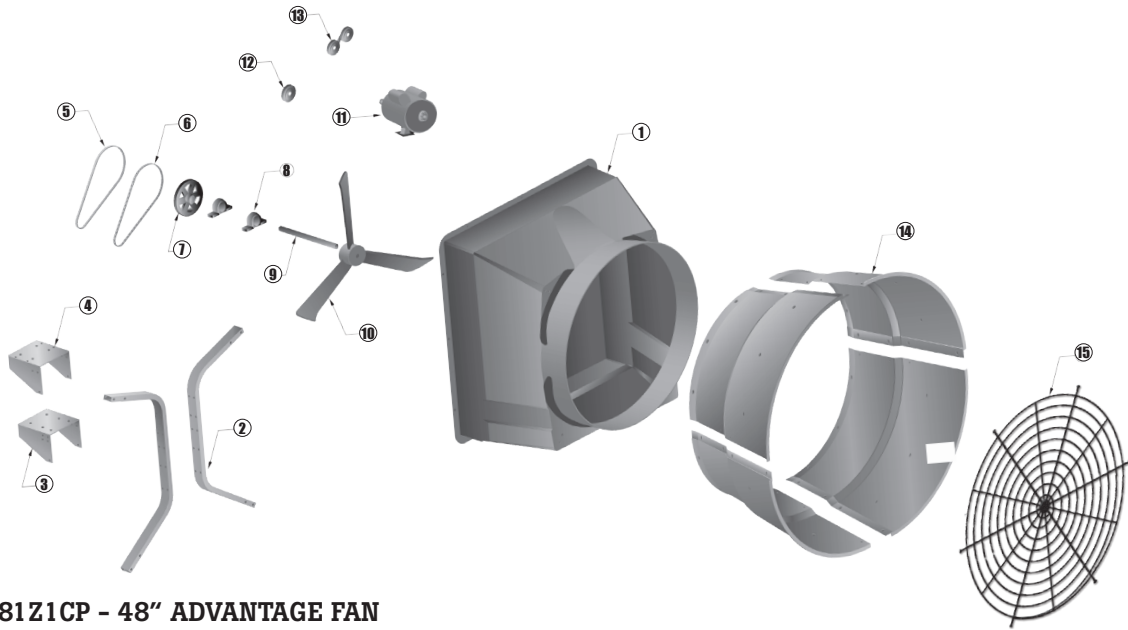
Aerotech AT24Z - 24" ADVANTAGE FAN

Key	Description	OEM#	G.S. Part #
1	Housing 24" Advantage Fan	#AFH3424	N/A
2	Clip Shutter For Right Side SS	#AFH2119	N/A
3	Blade 24" w/ 1/2" Bore	#AFP1033SS	N/A
4	Mount for Motor 24"	#AFH1010	N/A
5	Motor Fan 1/3 Hp 1075 RPM for 24" Fan	#AFM1008	#HS9001
6	Clip Shutter for Left Side SS	#AFH2117	N/A
N/S	Shutter Plastic 27-5/8"	#APZ24	#101204-5
N/S	Cone Discharge 24" w/ Guard	#A24RC	N/A
N/S	Shutter Plastic 27-5/8"	#AFH1237	N/A
N/S	Round Plastic Coated Guard	#AFH1237	N/A



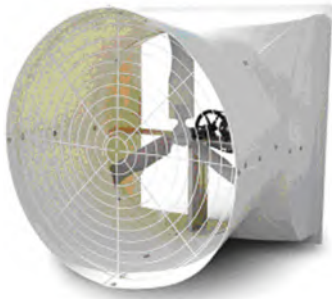
Aerotech AT3621 - 36" ADVANTAGE FAN

Key	Description	OEM#	G.S. Part #
1	Housing Fiberglass 36" Fan	#AFH2136A	N/A
2 & 3	Strut H Conversion 36" DD Advtg	#AFH1952	N/A
4	Blade 36" 5/8" Bore with Set Screw	#AFP1013SS	N/A
5	Motor 1/2 Hp 850 RPM (variable speed)	#AFM1011	#HS9016
5	Motor 1/2 Hp 850 RPM (single speed)	#AFM1048	N/A
6	Cone 36" Fiberglass 4 sections (+guard and hdw.)	#A365FC	N/A
7	Guard Round PVC Coated 36" For Cone	#AFH1336	N/A
N/S	Shutter Plastic 41-7/8"	#APZ36	#101203-1-8



Aerotech AT481Z1CP - 48" ADVANTAGE FAN

Key	Description	OEM#	G.S. Part #
1	Housing Fiberglass 48"	#AFH2148A	N/A
2,3,4	Conversion Kit 48" H Strut	#AFH1945	N/A
5	Belt V 1/2" x 49" Kevlar	#AFH1410	#HSA47K
5	Belt V 1/2" x 49" Standard	N/A	#HSA47
6	Belt Link Red Fenner Drives	#AFH2053	N/A
7	Sheave For Prop 1" Ak104	#AFH2034	#PAK1041
8	Bearing 1" Pillow Block With Zirk	#AFH2013	16G
9	Shaft for Propeller 1"	AFH2036	N/A
10	Blade 48" Bd 3 Bld Al 1" bore with Set Screw	#AFP1016SS	N/A
N/S	Motor 1 HP 1725 RPM 3 Phase	#AFM1029	#HS9301
11	Motor 1 HP 1725 RPM 56 FR 120/240 V 5/8" Shaft	#AFM1024	#HS9000
12	Pulley AK34-5/8	#AFH2032	#PAK3458
13	Pulley Idler V-Belt 3" (Pulley Only)	#AFH2406	#VX3012
14	Cone 48" Fiberglass 4 Sections w/ Guard & Hardware	#A481FC	N/A
15	Guard Round PVC Coated For 48" Fan Cone w/ Hardware	#AFH2648	N/A
N/S	Shutter Plastic 53-7/8"	#APZ48	#101209-1-8



Competitor Series 54" Fans

- A durable and aerodynamic fiberglass housing and discharge cone backed by a limited life-time warranty
- A high performance stainless steel propeller
- A PVC shutter included with fan. (Part #PS-59C)
- A high efficiency 1-3/4 HP motor in single or three phase
- An automatic belt tensioning system
- Heavy gauge, corrosion resistant aluminum drive train support
- Stainless steel hardware
- An optional winter closure panel (Part #20-0697)

Model#	HP	Phase	RPM	CFM/.05sp	CFM/per watt @05	Framed Opening
#GCS54C1-P	1.75	1	587	30,044	20.2	58.0" W X 60.5" T
#GCS54C3-P	1.75	3	587	30,044	20.2	58.0" W X 60.5" T



AP Performer Fans

- Fiberglass housing
- Rugged motors with hidden internal capacitor
- 5/16" aluminum motor mounts
- Low maintenance PVC shutters
- Balanced propellers constructed of composite fiberglass

Torque Nuts



#HS903-1	1/2" torque nut
#6202107	5/16" torque nut
#6202115	5/8" torque nut

Item#	Description	Fan	CFM/.05	CFM/.10	R.O. W x H
#GAPP-12F	1/4 HP - 12" fan with PVC shutter	12"	1,447	1,334	16-1/2" x 17-3/8"
#GAPP-14F	1/4 HP - 14" fan with PVC shutter	14"	2,385	2,270	19-3/8" x 19-5/8"
#GAPP-14FC	1/4 HP - 14" fan with PVC shutter and cone	14" w/cone	2,710	2,610	
#GAPP-18F	1/3 HP - 18" fan with PVC shutter	18"	4,205	3,964	25-1/2" x 25-1/2"
#GAPP-18FC	1/3 HP - 18" fan with PVC shutter and cone	18" w/cone	4,890		4,720
#GAPP-24F	1/3 HP - 24" fan with PVC shutter 24"	6,002	5,463		35" x 35"
#GAPP-24FC	1/3 HP - 24" fan with PVC shutter and cone 24" w/cone	7,120	6,710		
#GAPP-36F	1/2 HP - 36" fan PVC shutter 36"	10,297	9,392		43-3/4" x 43-3/4"
#GAPP-36FC	1/2 HP - 36" fan PVC shutter and cone	36" w/cone	11,310		10,360
#GAPPB-50	1 HP - 50" fan with PVC shutter	50"	20,151	17,792	55-1/2" x 55-1/2"
#GAPPB-50C	1 HP - 50" fan with PVC shutter and cone	50" w/cone	23,200		20,577



Replacement Motors for AP Performer Fans

Item#	Description	Fan
#HS9028KIT	115/230 V, 1 ph. 3300 RPM	GMB-10
#HS9007	1/4 HP, 115/230 V, 1 ph, 1725 RPM	GAPP-12
#HS9007	1/4 HP, 115/230 V, 1 ph, 1725 RPM	GAPP-14
#HS9008	1/3 HP, 115/230 V, 1 ph, 1725 RPM	GAPP-18
#HS9006A	1/3 HP, 115/230 V, 1 ph, 1100 RPM	GAPP-24
#HS9009A	1/2 HP, 115/230 V, 1 ph, 900 RPM	GAPP-36
#HS9019	1-1/2 HP, 115/208-230 V, 1 ph., 1725 RPM, 1 spd	GAPP-50
#HS9019	1-1/2 HP, 115/208-230 V, 1 ph., 1725 RPM, 1 spd	GFS52CL16SA



Replacement Props for AP Performer Fans

Item#	Description	Fan
#G13-0017	Prop, Composite, 9-3/8" dia, 5/16" shaft	GMB-10
#G13-0130	Prop, Composite, 12" dia, 1/2" shaft	GAPP-12
#G13-0106	Prop, Composite, 14-3/4" dia, 1/2" shaft	GAPP-14
#G13-0107	Prop, Composite, 19" dia, 1/2" shaft	GAPP-18
#G13-0209	Prop, Composite, 25-1/4" dia, 1/2" shaft	GAPP-24
#G13-0129	Prop, Composite, 36" dia, APP and MA	GAPP-36
#G13-0044	Prop, Composite, Performer Fan 50	GAPP-50
#G13-0132SS	Prop, Boss Fan 52, Stainless Steel	GFS52CL16SA



Multifan

Q Panel Fans

The Multifan panel fans adapt to a wide range of uses including side-wall fans, pit fans, and stir fans. Motors and impellers are perfectly matched for each fan model diameter and size.

- Total enclosed motors with die-cast aluminum housing.
- Lightweight polypropylene impeller stays in balance and reduces power needs.
- Corrosion resistant cast aluminum panel housing.

240 V.

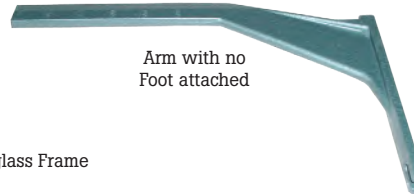
Item#	Impeller Diameter	Model	Voltage	0" S.P.	.05" S.P.	10" S.P.	AMP
#V4E25K1M70100	10"	4E25	240	882	820	760	0.40
#V4E30K2M60100	12"	4E30Q	240	1440	1390	1340	0.60
#V4E40K1M60100	16"	4E40Q	240	2960	2870	2780	1.20
#V4E45K1M60100	18"	4E45Q	240	3790	3670	3540	1.60
#V4E50K1M60100	20"	4E50Q	240	4850	4690	4540	2.00
#V6E63K1M60100	24"	6E63Q	240	7110	6910	6710	3.10
#MV6E6311M60100	24"	6E63EQ	240	5770	5470	5160	1.50
#V8E92K1M60100	36"	8E92Q	240	11200	10500	9800	3.90

Multifan

Q Line Replacement Parts



Fiberglass Frame



Arm with no Foot attached



Large Q on Motor Tag 3/8" between Fins

Model	Size	Motor	Impellers	Arms (3 per fan)
2E30Q	12"	M2E3001M60100	MW312C6G2B10N01	MGBVP3011G2
4E30Q	12"	M4E3001M60100	MW312C6G3B10N01	MGBVP3011G2
4E35Q	14"	M4E3501M60100	MW362C6P3B10NB	MGBVP3511G2
4E40Q	16"	M4E4001M60100	MW412C6P3B10NB	MGBVP4011G2
4E45Q	18"	M4E4501M60100	MW460C6P3B10NB	MGBVP4511G2
4E50Q	20"	M4E5001M60100	MW512C6P3B10N84	MGBVP5011G2
6E63Q	24"	M6E6303M60100	MW646G5G5B17N03	MGBVP6310G2
8E92Q	36"	M8E9200M60100	MW915G3G8L17A04	MGBVP0030G2

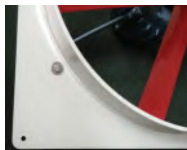


Multifan Old Style Replacement Fans

(Fit in Existing Poly Fan Housing and Wall openings.)

Item#	Impeller Diameter	Voltage	Nominal RPM	AMP	Speed Cont.*
120V					
#MV4E3004P70	12"	120	1645	1.10	T+E
#MV4E4006P70	16"	120	1600	2.30	T+E
#MV4E4507P70	18"	120	1600	3.00	T+E
#MV4E5008P70	20"	120	1565	4.00	T+E
#MV6E6302P70	24"	120	1020	5.60	T+E
240V					
#MV2E3006P60	12"	240	3200	1.40	T+E
#MV4E3002P60	12"	240	1600	0.60	T+E
#MV4E4003P60	16"	240	1600	1.20	T+E
#MV4E4505P60	18"	240	1600	1.60	T+E
#MV4E5006P60	20"	240	1600	2.00	T+E
#MV6E6301P60	24"	240	1000	3.10	T+E

- Fans Available in: 120V or 240V; 60 Hz or 50 Hz; Single or Three Phase
- Fans built using "Q" motors, arms, and impeller



Frames & Clips Only

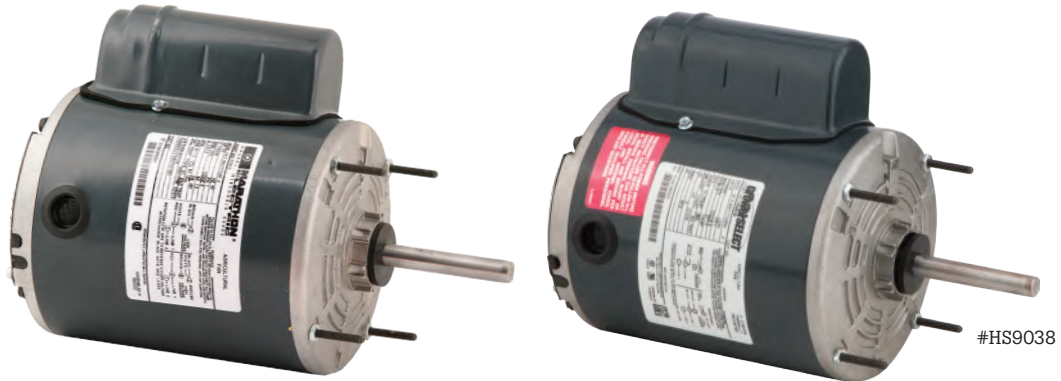
Item#	Impeller Diameter	Description
#MVV12PF/CLIPS	12"	12" plastic frame w/ arm clips
#MVV16PF/CLIPS	16"	16" plastic frame w/ arm clips
#MVV18PF/CLIPS	18"	18" plastic frame w/ arm clips
#MVV20PF/CLIPS	20"	20" plastic frame w/ arm clips
#MVV24PF/CLIPS	24"	24" plastic frame w/ arm clips
#MVVQARMCLIP	CLIP	Clip for plastic & steel frame/Q arms

Pruden Polystainless Fans



- Full turn down weather hood for built in wind protection
- Stainless Steel Venturi offers tight blade tip clearance for efficient air delivery
- Stainless Steel motor mount hardware for easy inside removal.
- Replaceable plastic blades with aluminum hub.

Item#	Description	Hp	cfm/.04	cfm/.10	RO WxH
#PFPS-12C	12" w/ PVC shutter	1/6	1,395	1,325	18-3/4" x 18-3/4"
#PFPS16D	16" w/ PVC shutter	1/4	2,540	2,315	21-3/4" x 21-3/4"
#PFPS20E	20 w/ PVC shutter	1/4	3,320	3,060	25-3/4" x 25-3/4"
#PFPS20G	20 w/ PVC shutter	1/3	4,095	3,735	25-3/4" x 25-3/4"
#PFPS-20G	20 w/ PVC shutter	1/2	4,765	4,345	25-3/4" x 25-3/4"
#PFPS24H	24" w/ PVC shutter	1/3	5,210	4,680	29" x 29"



Replacement Motors

Item#	Hp	Voltage	RPM	AMPS	Pruden #	Fan model
#HS9035	1/4	115/230	1625	3.2/1.6	PFM14	PFPS16D, PFPS20E
#HS9037	1/3	115/230	1625	4.2/2.1	PFM13B	PFPS20G
#PFM12A	1/2	115/230	1700	5.0/2.5	N/A	PFPS20GG
#HS9038	1/3	115/230	1100	3.8/1.9	PFM13	PFPS24, PFP24H



Replacement Shutters

Item#	Size	Fan Model
#101081	17-1/2" x 17-1/2"	PFPS12C
#10111	20" x 20"	PFPS16D
#10115-5	22-1/2" x 22-1/2"	PFPS20E, 20G, 20GG
#10118-5	27-1/2" x 27-1/2"	PFPS24H, 24C



Replacement Motors

Item#	Bore	Pitch	RPM	Wings	Fan model
#PC12	1/2"	45°	1625	3	PFPS12C
#PFPB16D	1/2"	40°	1625	3	PFPS16D
#PG20	1/2"	40°	1725	3	PFPS20G
#PFPB20GG	1/2"	45°	1725	3	PFPS20GG
#HS17001	1/2"	45°	1100	4	PFPS24H, PFPS24C






WINDSTORM

54" Galvanized Slant Wall Fan

Belt Driven 54" fan with galvanized metal frame and aluminum vane shutter. A one Hp., 1725 rpm, 120/240-volt motor powers a balanced galvanized prop. R.O. 60.75" Wide x 63.5" High.

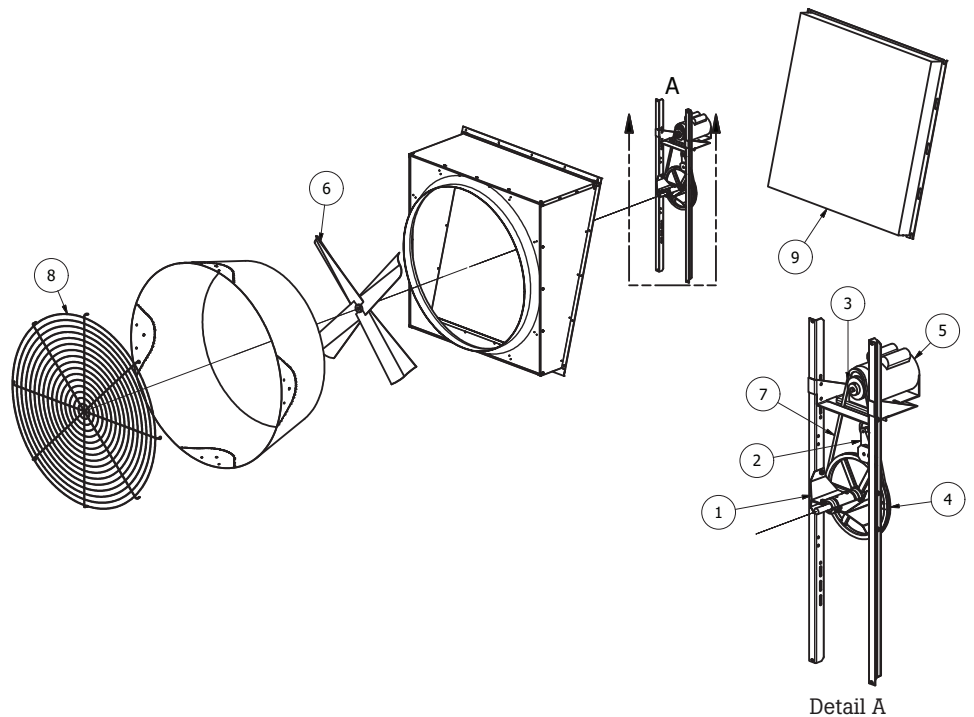
Item#	.00 Static Pressure		.05 Static Pressure		.10 Static Pressure		Airflow Ratio	Bess Lab Test #
	CFM	CFM/WATT	CFM	CFM/WATT	CFM	CFM/WATT		
WS-54SBDLA	28,400	23.6	27,100	21.5	25,400	19.2	.75	14344



Features self-adjusting tensioner maintains correct belt tension for improved fan performance, link style belt and permanently lubricated bearings.



Galvanized metal cone features perforated edges that allow fans to be installed closer to each other in retrofit applications, reducing the need to reframe each fan opening.



Replacement Parts

- 1) #HS903-2 Jack Shaft Housing Galv 2.5mm Thick
- 2) #HS903-3 Tensioner Rotary Assembly w/ Splash Guards
- 3) #PAK2858A Pulley AK28-5/8
- 4) #PAK1041 Pulley AK104-1
- 5) #HS9014C 1-1/2 Hp motor, 1725 RPM, 56 FR, 120/240 Volt, 5/8" shaft
- 6) #HS900-54B Prop 54" 4-Blade Galvanized WS Fan
- 7) #AFH2053 Belt Link Red Fenner Drive A Belt 1/2" Power Twist Per Foot
- 8) #HS902-1 54" Fan Prop Guard 68" Cone MD
- 9) #HS901-1 Shutter 54" WS SW Fan 58" x 59" x 2.5"
- N/S) #HSLABEL-080 Label Warning-High Voltage, Flying Objects, Rotating Blade



GrowerSELECT  **HOGSLAT**

WINDSTORM

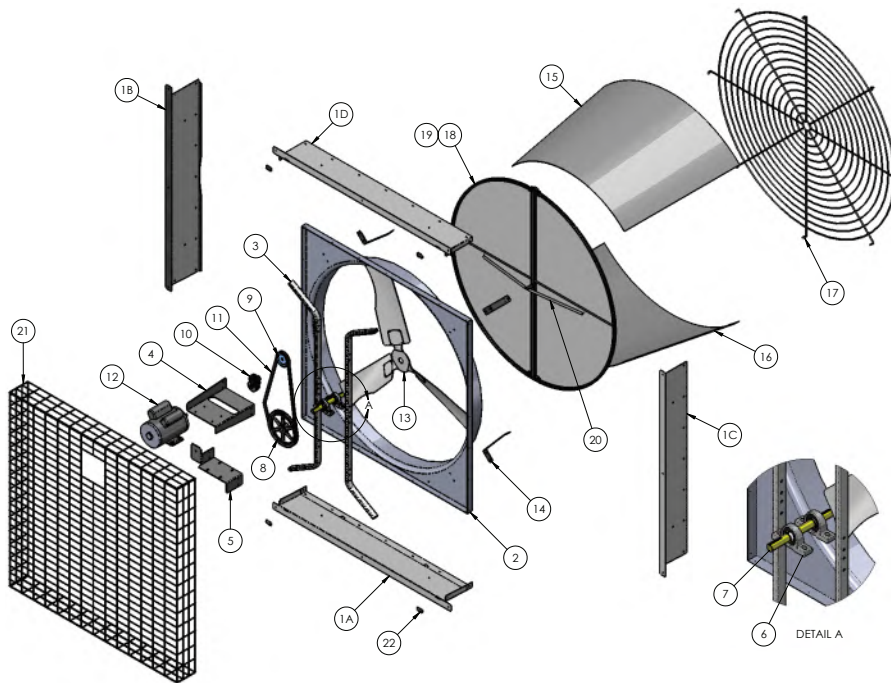
52" Galvanized Butterfly Fan

The ideal fan for remodeling or adding extra CFM to increase the wind speed in your house!

DESIGNED TO FIT BETWEEN THE EXISTING STUDS WITHOUT COSTLY EXTRA CONSTRUCTION! R.O. 56.5" Wide x 56.5" High

Type	Item#	.00 Static Pressure		.05 Static Pressure		.10 Static Pressure		Airflow Ratio	Bess Lab Test #
		CFM	CFM/WATT	CFM	CFM/WATT	CFM	CFM/WATT		
High Capacity	WS-F52B2A	30,100	21.6	28,900	19.9	27,500	18.1	.81	14099
High Efficiency	WS-F52B-HE2A*	27,700	25.2	26,300	22.7	24,700	20.4	.80	14100

*Conversion Kit to modify WS-F52B2A to High Efficiency: Includes blade and motor pulley with 61" V-belt



Replacement Parts

1A) #52FHB-G	Fan Housing Bottom	10) #SCISBT	Belt Tension Idler
1B) #52FHL-G	Fan Housing Left	10A) #WS-ISBTPULLEY	Pulley only for SCISBT
1C) #52FHR-G	Fan Housing Right	11) #HSAX61	Belt for Hi Flo
1D) #52FHT-G	Fan Housing Top	11A) #HSAX61	Belt for Hi Flo Gen 2
2) #S52VENTURI-G	Venturi Orifice	11) #HSAX63	Belt for HE
3) #S52UPRIGHT-G	Upright	11B) #HSAX64	Belt for HE Gen 2
4) #52MP-G	Motor Pan	12) #HS9019	1-1/2 Hp motor for Hi Flo
5) #WS-52118	Blade Pan	13) #HS900-52G	Blade
6) #16G	Pillow Block Bearing	13A) #SGFB-52783-25	Blade Gen 2
7) #SHAFT1-1150	Fan Shaft	14) #SC52CB-G	Cone Brace
8) #PAFD112100	Blade Pulley for Hi Flo version	15) #SC52CONE-G	Cone Section Top & Sides
8A) #PAK941	Blade Pulley for HI Flo Gen 2	16) #SC52BTMG	Cone Section Bottom
8) #PAFD104100	Blade Pulley for HE version	17) #SC52CG-G	Cone Guard
8B) #PAK1141	Blade Pulley for HE Gen 2	18) #HS901-52	Butterfly Shutter Assembly
9) #PAK4658	Motor Pulley for Hi Fo	19) #OTAPEWS38X14X17	Weather Stripping Tape
9A) #PAK4158	Motor Pulley for Hi Flo Gen 2	20) #HS903-14	Shutter Spring
9) #PAK3958	Motor Pulley for HE	21) #HS902-5	Wire Cloth Guard
9B) #PAK4458	Motor Pulley for HE Gen 2		



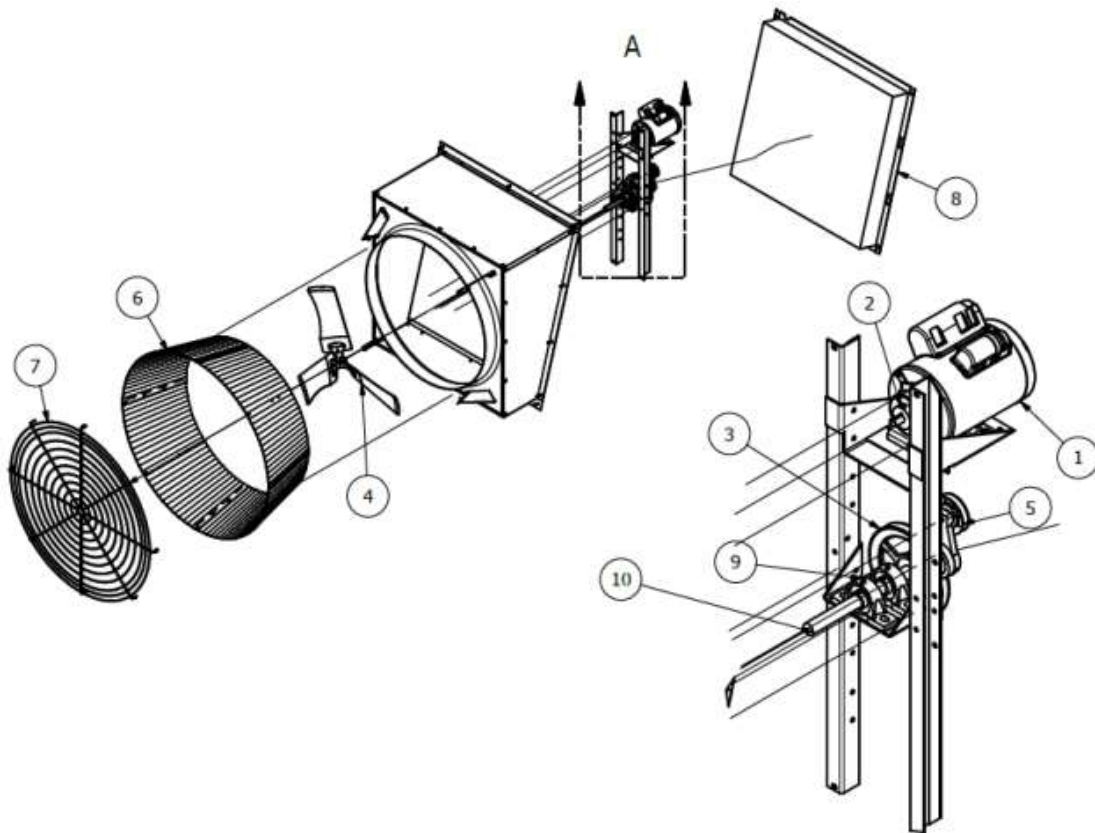



WINDSTORM

36" Galvanized Slant Wall Fan

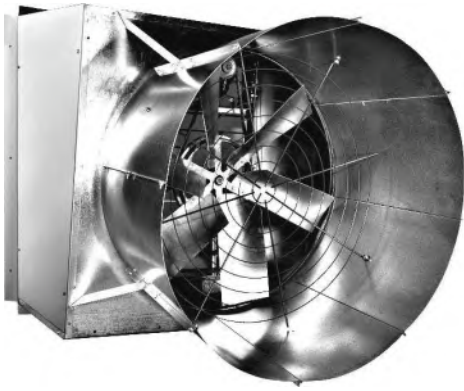
Belt-driven 36" fan with galvanized metal housing and aluminum vane shutter. A 1/2-Hp, 1725 RPM, 115/208-230 motor powers a balanced galvanized prop. Fans takes a 40-3/4" (W) x 42-3/4" (H) Rough Opening.

Item#	.00 Static Pressure		.05 Static Pressure		.10 Static Pressure		Airflow Ratio	Bess Lab Test #
	CFM	CFM/WATT	CFM	CFM/WATT	CFM	CFM/WATT		
WS-36SBDLA	11,080	18.2	10,470	16.0	9970	14.8	.82	18225



Replacement Parts

- 1) HS9315A Motor 1/2 HP 1725 RPM 230/460V 3P 50/60 Hz
- HS9315A-VFD Motor 1/2 HP 1725 RPM 230/460V 3P VFD Compat
- 2) PAK3058 Pulley AK30-5/8
- 3) PAK641 Pulley 6.25" X 1"
- 4) HS900-36H Prop 36" Galvanized 4 Blade 1" Shaft 0
- 5) HS903-8 Tensioner Rotary Assembly 1.7" Light Gray
- 8) HS901-36L Shutter Custom 36" Alum Windstorm Slantwall Fan
- 9) UCP20516G5 Bearing 1" Pillow Block Standard 2 Set Screws
- N/S) HS903-7A Belt Power Twist Gray 2nd Gen (BOM Only)



Coolair 48-Inch Galvanized Slant Wall Cone Fan

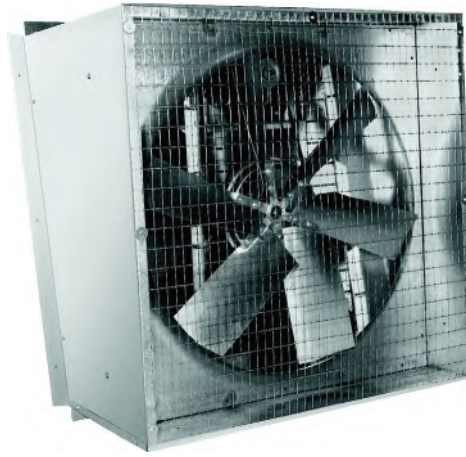
• 1-HP Motor • Aluminum Shutter • 23,008 CFM

With Aluminum Shutter INCLUDES:

- #CA13435.....1 Hp motor, 115/230 V
- #PAK3958.....5/8" motor pulley
- #CASHW48C.....Slope wall housing
- #CANCFA48CONE.....48" fan cone
- #CANCFB48.....48" fan only
- #CALRWS1.....51" Aluminum shutter

With PVC Shutter INCLUDES: All but aluminum

- #CAPVCS1.....51" x 51" PVC shutter
- ALSO AVAILABLE - 48-Inch Galvanized Panel Fan (not shown)
- #CANCFB48.....Less motor and pulley



36-Inch Galvanized Slant Wall Fan

- Black Plastic Shutter
- 1/2-HP motor
- 10,688 CFM

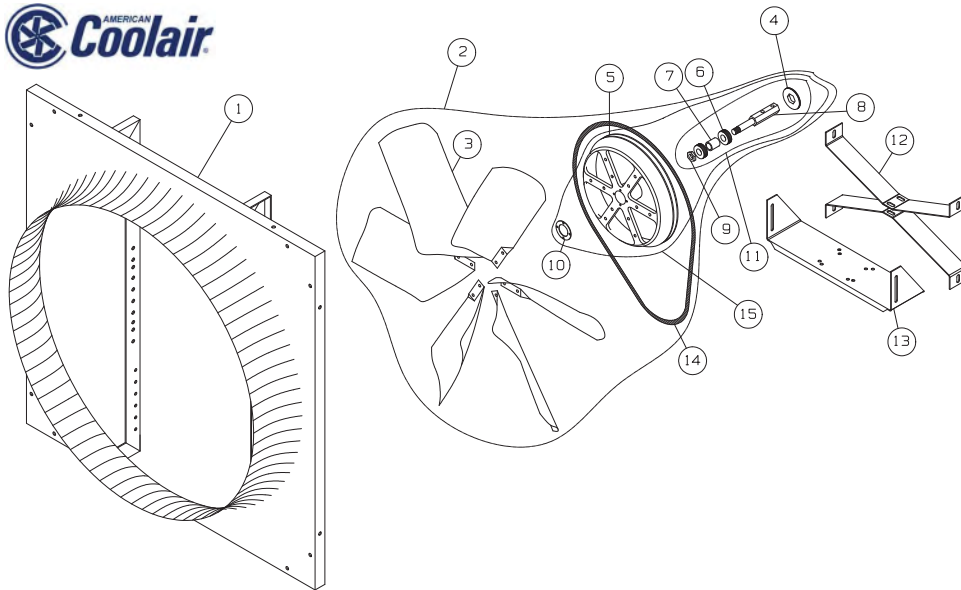
- #CANC36G.....36" fan only
- #CA13436.....1.2 Hp Motor, 115/230 V
- #PAK3958.....5/8" motor pulley
- #CASWH36.....36" slope wall housing
- #101202.....plastic shutter, 39" x 39"



36-Inch Fan Only

- 1/2 HP motor
- 11,090 CFM
- with wire guards

- #CANC36G.....36" fan only
- #CA13436.....1/2 Hp, 115/230 V motor
- #PAK3958.....5/8" motor pulley



#CA14-113-44-1



#STD6203



#CA14-119-5-1



#CA12-174-62-3



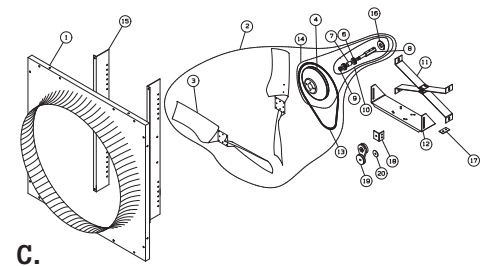
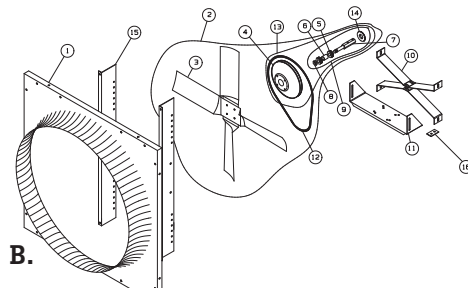
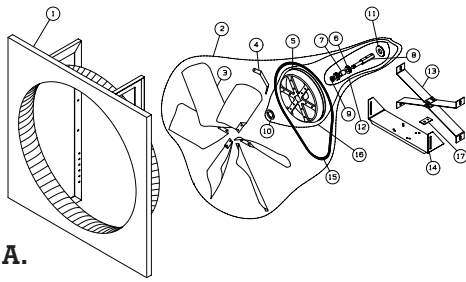
#CA14-183-4-3



#CA14-232-15-1

Coolair NCF36-48 Fan Parts List

Key	Description	CANC36	CANCFA36	CANCFA48	CANCFB48
1	Fan Panel Assembly	CANC36/LBA	CANCFA36/LBA	CANCFA48/LBA	CANCFB48/LBA
2	Blade Assembly	CA14-235-63-1	CA14-235-62-1	CA14-235-90-1	CA14-235-72-1
3	Blades	CA14-113-33-1	CA14-113-33-1	CA14-113-60-1	CA14-113-44-1
4	Bearing Protector	CA12-174-62-2	CA12-174-62-2	CA12-174-62-3	CA12-174-62-3
5	Disc	CA14-132-17-1	CA14-132-17-1	CA14-132-15-1	CA14-132-15-1
6	Bearings	STD6203	STD6203	STD6205	STD6205
7	Spacer	CA14-183-4-5	CA14-183-4-5	CA14-183-4-3	CA14-183-4-3
8	Shaft	CA14-180-20-1	CA14-180-20-1	CA14-180-6-3	CA14-180-6-3
9	Locknut	CA1202.7-5/8E	CA1202.7-5/8E	CA1202.7-7/8E	CA1202.7-7/8E
10	Bearing Cap	CA14-119-4-1	CA14-119-4-1	CA14-119-5-1	CA14-119-5-1
11	Shaft Assembly	CA14-208-5-1	CA14-208-5-1	CA14-208-5-5	CA14-208-5-5
12	X-Braces	CA14-115-6-4	CA14-115-6-4	CA14-115-6-5	CA14-115-6-5
13	Motor Bracket	CA14-161-15-5	CA14-161-15-5	CA14-161-15-6	CA14-161-15-6
14	Belt	HSA58	HSA58	HSA71	HSA71
15	Disc Assembly	CA14-229-10-4	CA14-229-10-4	CA14-229-10-7	CA14-229-10-7



A) Coolair NBF Fan Parts List

Key	Description	CANBF24	CANBF30	CANBF36	CANBF42	CANBF48	CANBFA54
1	Fan Panel Assembly	CALL	CALL	CANBF36/LBA	CALL	CANBF48/LBA	CALL
2	Blade Assembly	CA14-235-68-1	CA14-235-69-1	CA14-235-62-1	CA14-235-71-1	CA14-235-72-1	CA14-235-97-1
3	Blades	CA14-113-38-1	CA14-113-40-1	CA14-113-77-1	CA14-113-42-1	CA14-113-44-1	CA14-113-61-1
4	Struts	-	-	-	-	-	CA14-186-23-1
5	Disc	CA14-132-13-1	CA14-132-13-1	CA14-132-17-1	CA1408.13-1	CA14-232-15-1	CA14-232-15-1
6	Bearings	CA12-31-3-2	CA12-31-3-2	CA12-31-3-2	CA12-31-3-2	CA12-31-5-2	CA12-31-5-2
7	Spacer	CA14-183-4-1	CA14-183-4-1	CA14-183-4-5	CA14-183-4-5	CA14-183-4-3	CA14-183-4-3
8	Shaft	CA14-180-6-4	CA14-180-6-4	CA14-180-20-1	CA14-180-20-1	CA14-180-6-3	CA14-180-6-3
9	Locknut	CA1202.7-5/8E	CA1202.7-5/8E	CA1202.7-5/8E	CA1202.7-5/8E	CA1202.7-7/8E	CA1202.7-7/8E
10	Bearing Cap	CA14-119-4-1	CA14-119-4-1	CA14-119-4-1	CA14-119-4-1	CA14-119-5-1	CA14-119-5-1
11	Bearing Protector	CA12-174-62-2	CA12-174-62-2	CA12-174-62-2	CA12-174-62-2	CA12-174-62-3	CA12-174-62-3
12	Shaft Assembly	CA14-208-5-3	CA14-208-5-3	CA14-208-5-1	CA14-208-5-1	CA14-208-5-5	CA14-208-5-5
13	X-Braces	CA14-115-6-1	CA14-115-6-1	CA14-115-6-2	CA14-115-6-2	CA14-115-6-2	CA14-115-6-2
14	Motor Bracket	CA14-161-15-1	CA14-161-15-1	CA14-161-15-3	CA14-161-15-3	CA14-161-15-3	CA14-161-168-1
15	Belt	CALL	CA1247.1-48	CA1247.1-58	CA1247.1-61	CA1247.1-71	CA1247.1-75
16	Disc Assembly	CA14-229-10-2	CA14-229-10-2	CA14-229-10-4	CA14-229-10-6	CA14-229-10-7	CA14-229-10-7
17	Shim	-	-	-	-	-	CA14-160-103-1

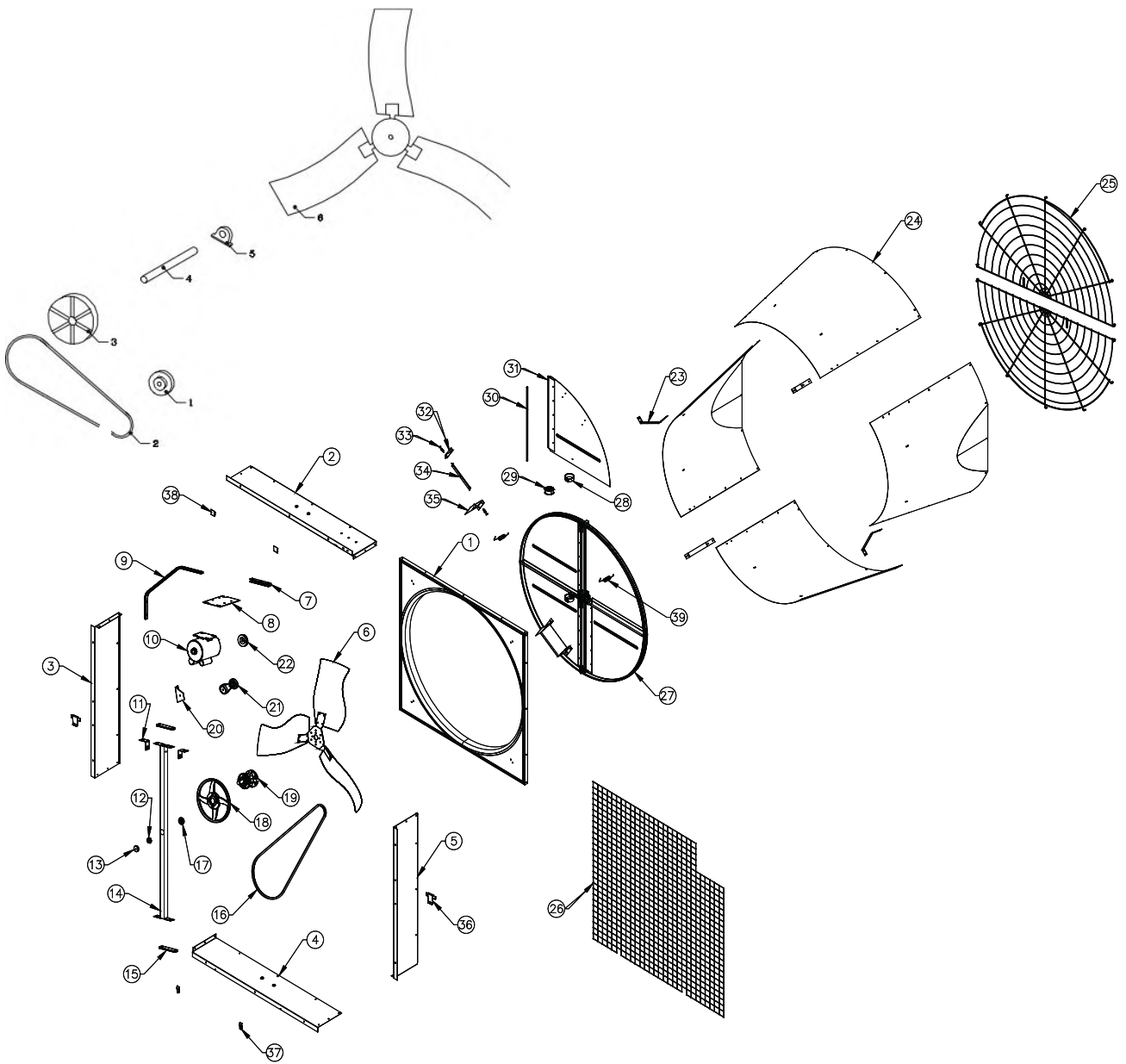


B) Coolair NEF36/NEFC48/NEFB52/NEF54 Fan Parts List

Key	Description	CANEF36	CANEF48	CANEFB52	CANEF54
1	Fan Panel	CA14-169-148-1	CA14-169-180-1	CA14-169-181-1	CA14-169-211-1
2	Blade Assembly	CA14-235-125-1	CA14-235-126-3	CA14-235-165-2	CA14-235-195-1
3	Blades	CA14-113-68-1	CA14-113-69-2	CA14-113-86-1	CA14-113-86-2
4	Disc	CA14-132-23-1	CA14-132-31-1	CA14-132-31-1	CA14-132-31-1
5	Bearings	CA12-31-3-2	CA12-31-3-2	CA12-31-3-2	CA12-31-3-2
6	Spacer	CA14-183-4-5	CA14-183-4-5	CA14-183-4-5	CA14-183-4-5
7	Shaft	CA14-180-20-1	CA14-180-20-1	CA14-180-20-1	CA14-180-20-1
8	Locknut	CA1202.7-5/8E	CA1202.7-5/8E	CA1202.7-5/8E	CA1202.7-5/8E
9	Shaft Assembly	CA14-208-5-1	CA14-208-5-1	CA14-208-5-1	CA14-208-5-1
10	X-Braces	CA14-115-6-4	CA14-115-6-7	CA14-115-6-5	CA14-115-6-5
11	Motor Bracket	CA14-161-15-5	CA14-161-15-5	CA14-161-15-6	CA14-161-15-6
12	Belt	CA1247.1-44	CA1247.3-65	-	CA1247.3-65 -
13	Disc Assembly	CA14-229-10-9	CA14-229-11-5	CA14-229-11-5	CA14-229-11-5
14	Bearing Protector	CA12-174-62-2	CA12-174-62-2	CA12-174-62-2	CA12-174-62-2
15	Uprights	CA14-193-86-2	CA14-193-86-1	CA14-193-86-1	CA14-193-86-4
16	Shim	-	-	CA14-160-103-1	CA14-160-103-1

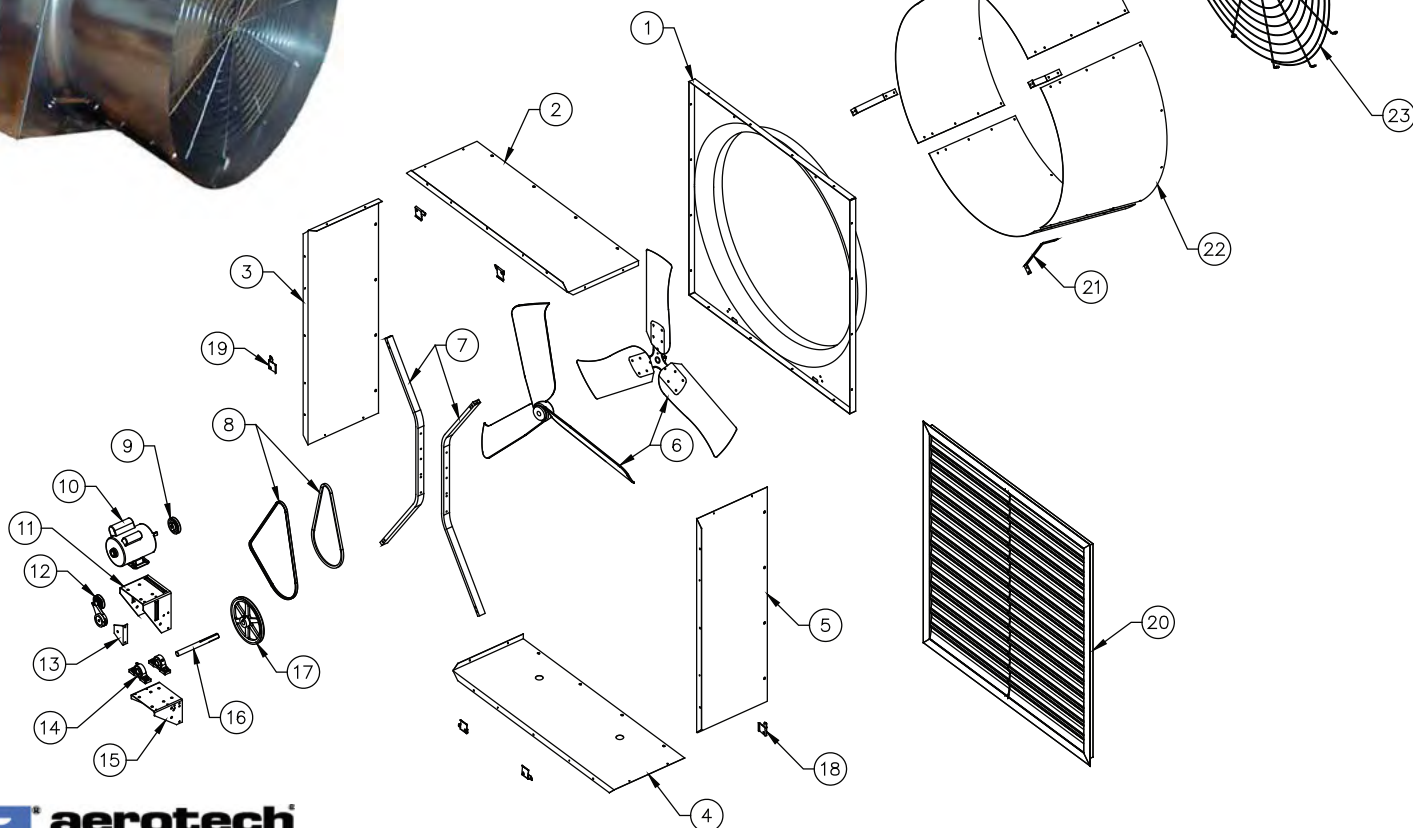
C) Coolair NBRB52 Fan Parts List

Key	Description	CANBRB52	Key	Description	CANBRB52
1	Fan Panel	CA14-169-181-1	12	Motor Bracket	CA14-161-15-6
2	Blade Assembly	CA14-235-164-4	13	Belt	CA1247.3-65
3	Blades	CA14-113-86-1	14	Disc Assembly	CA14-229-11-5
4	Disc	CA14-132-31-1	15	Uprights	CA14-193-86-1
6	Bearings	CA12-31-3-2	16	Bearing Protector	CA12-174-62-2
7	Spacer	CA14-183-4-5	17	Shim	CA14-160-103-1
8	Shaft	CA14-180-20-1	18	Tensioner Bracket	CA14-158-68-1
9	Locknut	CA1202.7-5/8E	19	Tensioner	CA1258.12-2
10	Shaft Assembly	CA14-208-5-1	20	Bearing Protector	CA14-126-79-1
11	X-Braces	CA14-115-6-5			



Aerotech Dragonfly

- | | | | |
|--------------|--|--------------|---|
| 1) #AFH1951 | Orifice panel, galvanized | #AFH2419 | Tensioner arm only, aluminum |
| 2) #AFH4061 | Top housing panel, galvanized | 22) #AFH2138 | Motor Sheave AK 35 x 5/8" bore w/ keyseat, CI |
| 3) #AFH4062 | Left/Right side housing panel, galvanized | 23) #AFH2130 | Cone support bracket, GC type, galvanized |
| 4) #AFH4060 | Bottom housing panel, galvanized | 24) #AFH4349 | Discharge cone (Top/Bottom section), galvanized |
| 5) #AFH4062 | Left/Right side panel of housing, galvanized | #AFH4450 | Discharge cone (Left/Right section), galvanized |
| 6) #AFP2549 | Prop assembly, 3-blade, galvanized | 25) #AFH2654 | Guard, Flat side cone, 1/2 circle, PVC coated |
| 7) #AFH2429 | Support Bracket for motor mounting plate, galvanized | 26) #AFH1750 | Inlet guard, 56" S.Q., 2" x 2", Galvanized |
| 8) #AFH2846 | Mounting Plate for NEMA 56 motor | 27) #ADG1050 | Assembly, Dragonfly, 50" fan |
| 9) #AFH2428 | Center support brace for Strut, galvanized | 28) #AKX1459 | Spring, Constant force, 1" W, 1.15LB |
| 10) #HS9000 | Motor, 1 Hp, 1725 RPM, 56Fr., 1ph, 120/240 | 29) #AAC2072 | Spring reel spool, 2.75" O.D., 1.25"W. |
| 11) #AFH1302 | Reinforced Brackets for Strut, galvanized | 30) #AFA2712 | Tube, Hinge, 26.2"L |
| 12) #AKN1860 | Hex nut, M25x10mm, zinc plated | 31) #AFA2722 | 50" Dragonfly door flat |
| 13) #AKX1208 | Cover plastic | #AFA2724 | 50" Dragonfly door, offset |
| 14) #AFH1930 | Strut, galvanized | 32) #AFA1732 | Short wing support bracket |
| 15) #AFH1932 | Spacer plate, plastic | 33) #AKX1043 | 5/16" Push-in fastener, nylon |
| 16) #AFH1505 | V-belt, 87" A-section (A85), aramid fiber | 34) #AFA1733 | Dragonfly door wing |
| 17) #AKX1130 | Bushing, aluminum | 35) #AFA1730 | Tall wing support bracket |
| 18) #AFH2137 | Propeller sheave, aluminum | 36) #AFH1965 | Universal shutter clip, galvanized |
| 19) #AFP2060 | Hub w/ bearing and shaft | 37) #AKX1015 | Draw latches |
| 20) #AFH2504 | Mounting bracket for belt tensioner | 38) #AFH1278 | Guard support clips |
| 21) #VH3004 | Belt tensioner assembly w/ 3" idler pulley | 39) #AKX1470 | Retainer Spring |
| #AFH2406 | 3" idler pulley only, with bolt | | |



Grower Fans with Galvanized Cones

Key	Description	GB36VxCP	GB365VxCP	GB481VxCP	QTY
1	Orifice Panel, galvanized	AFH3136	AFH1248	AFH1252	1
2	Top Housing Panel, galvanized	AFH2201	AFH2201	AFH2221	1
3	Right Housing Panel, galvanized	AFH2201	AFH2201	AFH2221	1
4	Bottom Housing Panel, galvanized	AFH2204	AFH2204	AFH2224	1
5	Left Housing Panel, galvanized	AFH2201	AFH2201	AFH2221	1
6	Propeller, galvanized	AFP1041	AFP1041	AFP1042	1
7	Strut, galvanized	AFH2094	AFH2436	AFH2448	2
8	Link Belt	-	AFH2083	AFH2053	1
9	Aramid Fiber Belt	-	AFH1503	AFH1518	1
10	Motor Sheave	-	AFH2003	AFH2029	1
11	Motor, 1 Hp, 1725 RPM, 56Fr., 1 ph, 208-230/115 V	HS9005*	HS9015	HS9000	1
12	Motor Support	-	AFH2815	AFH2818	1
13	Belt Tensioner Assembly with 3" idler pulley	-	AFH2402	AFH2402	1
14	3" idler pulley only, w/ bolt	-	AFH2406	AFH2406	1
15	Tensioner Arm only, aluminum	-	AFH2419	AFH2419	1
16	Mounting Bracket for Belt Tensioner	-	AFH2504	AFH2504	1
17	Bearing, 1" bore x 1.44"CL, CI Holder	-	16G	16G	2
18	Bracket, bearing mount, galvanized	-	AFH2815	AFH2815	1
19	Shaft, 1" dia., steel	-	AFH2086	AFH2101	1
20	Propeller Sheave	-	AFH2091	PAK1041	1
21	Shutter clip, left, galvanized	AFH2110	AFH2110	AFH2110	VARIABLES
22	Shutter clip, right, galvanized	AFH2111	AFH2111	AFH2111	VARIABLES
23	Shutter, all plastic	101203-1-8	101203-1-8	101209-1-8	1
24	Cone Support Bracket, GC type, galvanized	AFH2130	AFH2130	AFH2130	4
25	Discharge cone, galvanized, (1) Section	AFH4236	AFH4236	AFH4248	4
26	Guard Kit, 48FC/48GC cone, PVC CTD, w/Hardware	AFH1336	AFH1336	AFH2648	1

Cumberland Butterfly Fans

36" Fan

• 1/2-HP motor • 9,984 CFM

50" Fan

• 1-HP motor • 22,400 CFM

#G50SCL16GA.....Galv. slant wall w/cone

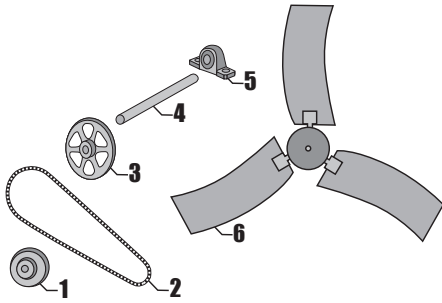
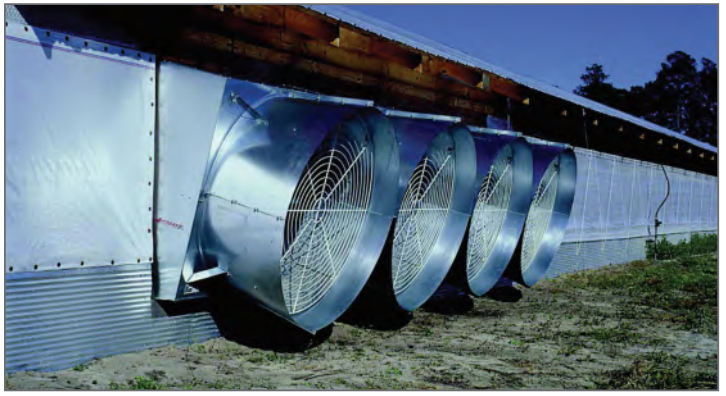
#101210.....54" black shutter

#GCGSB36.....36" 1/2 slant wall belt drive w/o shutter

#101202.....39" black shutter

Cumberland Butterfly Fan Performance

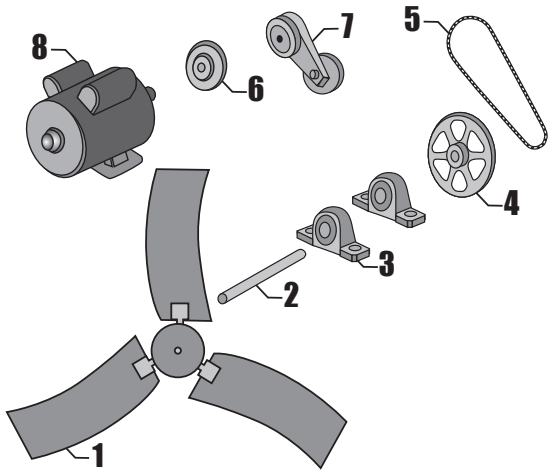
Model	RPM	HP	VOLTAGE	.05-SP	CFM/WATT	.10-SP	GFM/WATT
G50CBF16GAHF	638	1.5	115/230	25,427	21.5	23,603	18.9
G54CBF16GAHF	594	1.5	115/230	30,500	20.5	29,500	19.8



Cumberland Butterfly Fan Replacement Parts

• Parts shown for 1-phase, 60Hz application. Call for others.

- (1) #PAK3958 Pulley (motor) for 50" fan
- (1) #PAK3458 Pulley (motor) for 36" & 54" fans
- (2) #HSA38 Fan Belt 36"
- (2) #HSA58 Fan Belt 60" (for 50" & 54" fans)
- #HS9015 Motor for 36" Belt drive
- #HS9010 Motor for 50" Belt drive
- (3) #G16-0014 Pulley (prop) for 36" fan
- (3) #PAL1041 Pulley (prop) for 50" & 54" fan
- (4) #G16-0045 Shaft 36"
- (4) #SHAFT1-1150 Shaft 50"
- (5) #16G Bearing 36" & 50"
- (6) #G13-0100 Prop Blade for 36" fan
- (6) #G13-0103 Prop Blade for 50" fan
- (6) #G13-0227 Prop Blade for 54" fan



Replacement Parts for Hired Hand Mega Flow Fans

- 1) #H6403-9202 Steel, 36"
- 1) #H6403-5010 Steel, 3 Blade, 48"
- 1) #H6403-5021 Steel, 3 Blade, 52"
- 1) #H6403-5020 Steel, 3 Blade, 54"
- 2) #SHAFT1-1563 1" x 16" shaft
- 3) #16G Pillow blocking bearing
- 4) #H1011-5002 prop pulley - 36"
- 4) #PAFD104100 prop pulley - 48" & 52"
- 5) #HSAX44 V-belt - 36"
- 5) #HSAX49 V-belt - 48" & 52"
- 6) #PAK3458 Motor pulley - 36"
- 6) #PAK3458 Motor pulley - 48"
- 6) #PAK3958 Motor pulley - 52"
- 7) #FS0605ZF 3.5" Idler arm assembly
- 7A) #VX4004 Pulley only
- 8) #HS9015 Motor 1/2 Hp 1725 rpm 115/230 - 36"
- 8) #HS9000 Motor 1 Hp 1725 rpm 240V for 48" & 52" Fans

Hired Hand Replacement Props for Hired Hand Funnel Flow Fans



Item#	Description	Fan
#HSFP-003	Prop, Aluminum, 4 Blade	FF-18
#H6403-0121	Prop, Stainless Steel, 4 Blade	FF-24
#H6403-6112	Prop, Composite, 3 Blade	FF-36 BD
#H6403-6118	Prop, Composite, 3 Blade	FF-36 DD
#H6403-6111	Prop, Composite, 3 Blade	FF-48 HF
#H6403-6111	Prop, Composite, 3 Blade	FF-48 STANDARD
#HSFP-009	Prop, Stainless Steel, 3 Blade	FF-48 HE
#H6403-6113	Prop, Composite, 3 Blade	FF-52

Replacement Motors



Item#	Description	Fan
#H3017-5028	1/6 Hp, 240v, 1 ph, 3400 rpm	FF-10
#H3017-5024	1/4 Hp, 240v, 1 ph, 1725 rpm	FF-14
#H3017-5024	1/4 Hp, 240v, 1 ph, 1725 rpm	FF-18
#H3017-5018	1/3 Hp, 240v, 1 ph, 1100 rpm	FF-24
#H3017-0136	1/2 Hp, 240v, 1 ph, 1725 rpm	FF-36 BD
#H3017-5036	1/2 Hp, 240v, 1 ph, 850 rpm	FF-36 DD
#H3017-3099	1 Hp, 240v, 1 ph, 1725 rpm	FF-48 HF

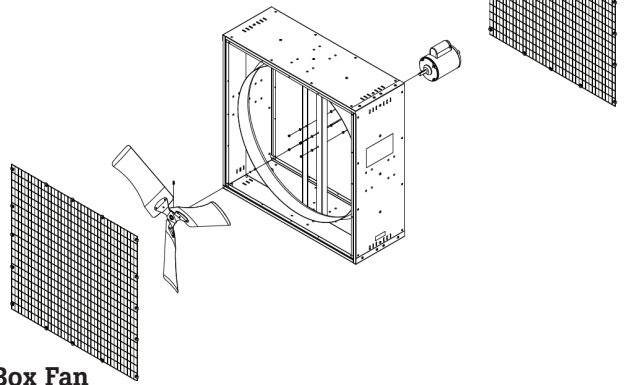


GrowerSELECT
WINDSTORM Box Fans

Windstorm™ box fans provide outstanding performance at an affordable price. They feature heavy galvanized steel housings with a secure wire guard which is easily removed for service.

Item#	Hp	RPM	Thrust (cfm)	cfm/W
WS-36BDD	1/2	850	9,950	21.7
WS-48BDD	1	850	16,900	19.0

GrowerSELECT
WINDSTORM
Box Fan Replacement Parts List



36" Box Fan

- #HS9005A Motor, 1/2 Hp 850 RPM 115/230V 60Hz
- #HS900-36D Prop 36" Galvanized 3 Blade 0.625" Shaft OD
- #HSCS-002 Cord SJ 14/3 9' 220 V
- #WS-36A-5 Wire Mesh Guard, 36"

48" Box Fan

- #N9028 Motor, 1 Hp 850 RPM 230V 60Hz
- #HS900-48 Prop 48" Galvanized 3 Blade 0.625" Shaft OD
- #HSCS-002 Cord SJ 14/3 9' 220 V
- #WS-48403 Wire Mesh Guard, 48"

*For OSHA compliant guards, contact your local Hog Slat representative.

GrowerSELECT
Replacement
ACME BDR48
Fan Housings

Constructed of 20 ga. Galvanized G90 steel, these replacement housings works for multiple ACME BDR48 Shallow Housing applications.



#HSBDR48-RK

- #HSBDR48-RK Shallow Housing Kit
- #WS-F48SW Deep Housing Kit



Bearing

• For Coolair and Acme products

- #STD6203 fits 21/36" shaft
- #STD6205 fits 1" shaft

Retrofit existing ACME® fan housings and save with GrowerSELECT® Housing Kits.

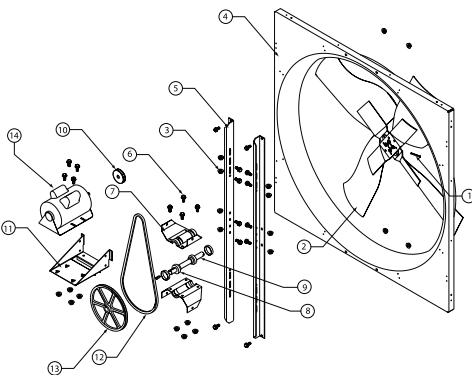


Before



After with Deep Housing Kit

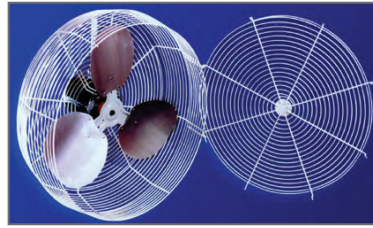
Acme Fan Replacement Parts



- 1) #EE941365 Roll Pin
- 2) #EE125330 36" Fan Blade Propeller
- 2) #HS900-48B 48" Fan Blade Propeller
- 4) #EE121321B Orifice Frame for 48" Fan
- 4) #EE125244 Orifice Frame for 36" Fan
- 6) #605082 Bolt 5/16" x 3/4" length
- 7) #EE121316 Bearing Base for 36" Fan
- 7) #EE121317 Bearing Base for 48" Fan
- 8) #EE129056 Bearing & Shaft Assy. 36" fan
- 8) #HS129058 Bearing & Shaft Assy. 48" fan
- 9) #EE121185 Shaft For 36" Acme Fan Old Style
- 9) #EE121193 Shaft For 48" Acme Fan Old Style
- 10) #PAK2358 Motor Pulley 36" Fan
- 10) #PAK3058 Motor Pulley 48" Fan
- 11) #EE121481 Motor Base 36" Fan
- 11) #EE121484 Motor Base 48" Fan
- 12) #HSAX38 Fan Belt 36" Fan Motor on Top
- 12) #HSAX28 Fan Belt 36" Fan Motor on Bottom
- 12) #HSA58 Fan Belt 48" Fan Motor on Top
- 12) #HSA46 Fan Belt 48" Fan Motor on Bottom
- 13) #EE129057 Fan Pulley for 36" Fan
- 13) #PAL11425MM Fan Pulley for 48" Fan
- 14) #HS9015A 1/2 Hp Motor Standard Duty for 36"
- 14) #HS9010 1 Hp Motor Standard Duty for 48"
- 14) #HS9000 1 Hp Motor Heavy Duty for 48"
- NS) #HSBDR48-RK Shallow Housing Panel Kit
- NS) #WS-F48SW Deep Housing Panel Kit



GrowerSELECT HOGSLAT WINDSTORM Stir Fans



- 115/230 Volts
- Durable, epoxy-coated guard
- Unique hinged front, simply unhook and swing open for fan maintenance!
- Comes with adjustable tilt bracket

Item#	Description	AMPS	FPM*	Thrust (lbf)	Thrust Eff Ratio**	kW	RPM	Thrust CFM	Thrust CFM/Watt
VB12	12", Variable	1	525	0.76	7	0.109	1,705	970	8.9
VB20	20", Variable	4	1,135	3.69	11	0.336	1,706	3,580	10.7
VB24	24", Variable	4.8	1,195	5.62	12.2	0.459	1,716	5,300	11.5
VBS36A	36" Single Sp	7	940	8.5	15.5	0.55	823	9,880	18

* FPM (Feet Per Minute) - Velocity measured center line at distance 5 time the prop diameter ** Thrust Efficiency Ratio is calculated by dividing the Thrust (lbf) by the kW

Stir Fan Motors

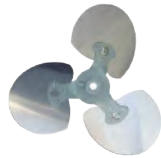
- Replacement motors for Schaeffer, Windstorm
- Single phase commercial duty
- Yoke/Pedestal fan motors
- TEAO (totally enclosed air over)



STIR FAN:

- 1-phase
- 60 Hz
- TEAO enclosure
- 115/230 volts

Item#	HP	Size	RPM	Frame
#VR110	1/10	12" fan	1725	48Y
#HS9076	1/3	20" fan	1725	48Y
#5330016	1/2	24" fan	1725	48Y
#VR12A	1/2	36" fan	825	48Y



Replacement Blades

- For Schaeffer and Windstorm stir fans

Item#	Size	Bore Size
#VRB12A	12"	1/2"
#VRB20A	20"	1/2"
#VRB24A	24"	5/8"
#VRB36D3	36"	5/8"



GrowerSELECT HOGSLAT WINDSTORM 18" Circulation Fan

- Wide guard spacing reduces buildup and allows for easier cleaning
- Versatile mounting bracket allows for easy tilt and swivel of fan
- 1/8 HP motor covered by 2-year warranty
- Complete with pre-wired cord HANG IT UP-PLUG IT IN
- 3-Speed
- 115V
- 2500 CFM
- .88 AMPS
- Aluminum Blade

#WS-18C3.....Windstorm 18" circ fan

Item #WS-18C3, 115V, 3-Speed, Aluminum Blade, 3-Speed control included:

AMPS	Speed	FPM*	Thrust (LBF)	kW	Thrust Eff Ratio**	RPM	Thrust CFM	Thrust CFM/Watt
.9	1	640	1.11	.100	11.1	1,623	1,770	17.7
	2	400	0.74	.066	11.3	1,203	1,450	22.0
	3	370	0.49	.052	9.5	988	1,180	17.7

* FPM (Feet Per Minute) - Velocity measured center line at distance 5 time the prop diameter ** Thrust Efficiency Ratio is calculated by dividing the Thrust (lbf) by the kW

60" Updraft Paddle Fan

- 43,500 CFM
- .71 AMPS
- 10" Stem
- 120 Volt



#NE190A-7R.....Updraft paddle fan, 60"

#NE105F.....Control 5 Fan Infinite Speed 120 Volt

#NE150F.....Control 8 Fan Infinite Speed 120 Volt

#NE200F.....Control 12 Fan Infinite Speed 120 Volt

18" Black Circulation Fan

- 18" Stir Fan, with all black powder-coated components
- Open Style grill is ideally suited for efficiency (OSHA grill available also)
- UL certified for outdoor use
- One of the best CFM ratings in the industry.



#SWFAN18STIR.....1725 RPM 1/10 Hp 115 V

18" Circulation Fan

- Complete with OSHA guard and swivel / tilt mounting bracket. Comes prewired with 8' 115v cord and 3sp pull chain.



#POW18.....18" circ fan, 3sp

Direct Aire Circulation Fan

- 1/5 Hp sealed motor with 2-year warranty. Wideguard spacing reduces buildup and easier to clean. Swivel/tilt mounting bracket. 2-Speed with off switch & 6 ft. pre-wired cord. UL approved. 120 volt/60 Hz.



#IS90618...18" low / 3,500 cfm high / 4,000 cfm

#IS90614...20" low / 4,350 cfm high / 5,250 cfm

Cumberland 20" Circulation Fan

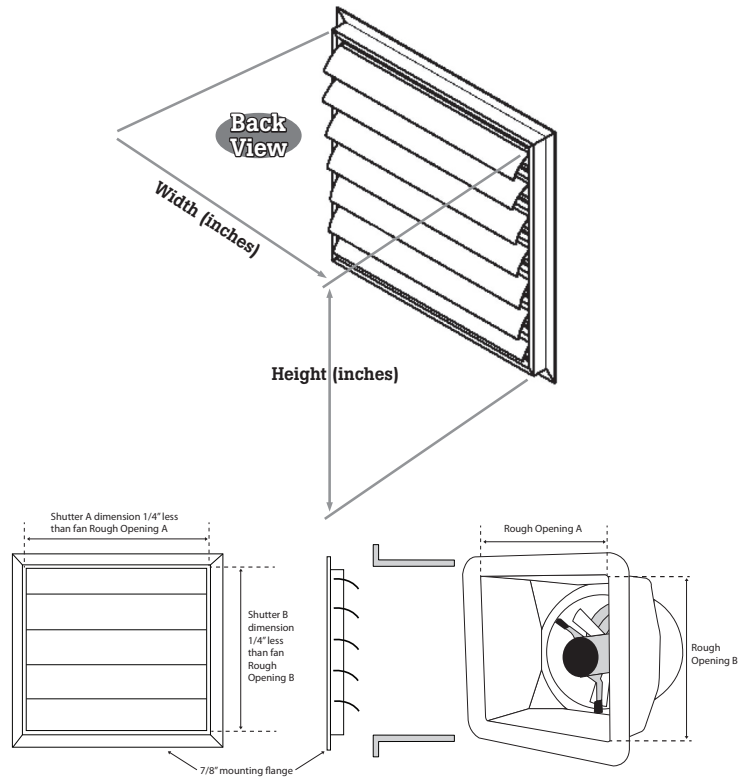
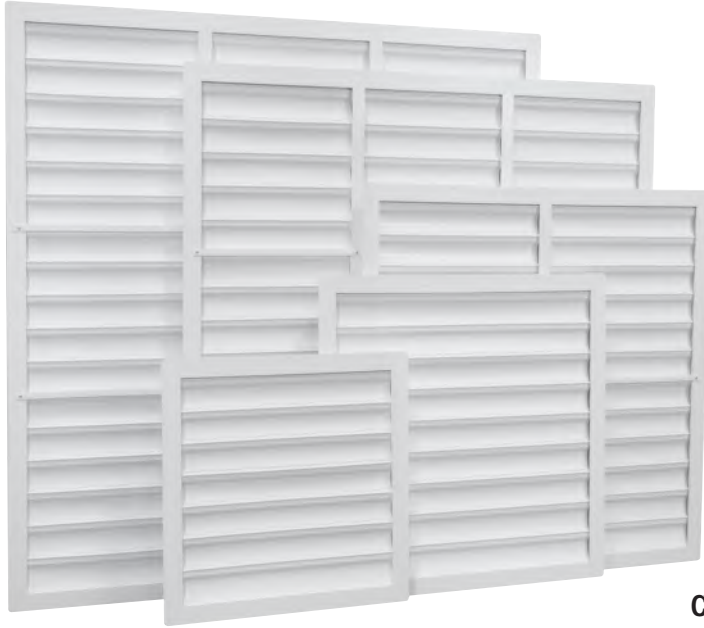
- PVC Coated Guards
- TEAO 1/10 Hp motor
- 1725 RPM
- 60 Hz; 115 Volt Single Phase



#GCCF20.....20" circulation fan

PVC Fan Shutters

- Low maintenance
- PVC vanes with true airfoil design
- Heavy PVC frame with reinforced corners
- 1" flange
- Many sizes available
- Spring steel galvanized rods extended entire length of the shutter with unique lock down ends



We build custom sizes!

Call us at 800-949-4647 with a fan rough opening size.

Item#	Color	Size (A x B)
10105	White	14" x 14"
10106	White	15" x 15"
10106-1	White	15-1/8" x 15-1/8"
10107	White	16" x 16"
10107-5	White	16-1/2" x 16-1/2"
10108	White	17" x 17"
101081	White	17-1/2" x 17-1/2"
10109	White	18" x 18"
10109-1	White	18-1/8" x 18-1/8"
10109-3	White	18-3/8" x 18-3/8"
10110A	White	19" x 19"
10111	White	20" x 20"
10112	White	21" x 21"
10112-3	White	21-3/8" x 21-3/8"
10112-5	White	21-1/2" x 21-1/2"
10112-6	White	21-5/8" x 21-5/8"
10113	White	22" x 22"
10113-5	White	22-1/2" x 22-1/2"
10115	White	24" x 24"
10115-3	White	24-3/8" x 24-3/8"
10115-5	White	24-1/2" x 24-1/2"
10116	White	25" x 25"
10116-8	White	25-7/8" x 25-7/8"
10117	White	26" x 26"
10118	White	27" x 27"
10118-3	White	27-3/8" x 27-3/8"
10118-5	White	27-1/2" x 27-1/2"
10118-6	White	27-5/8" x 27-5/8"
10118-75	White	27-3/4" x 27-3/4"
10119	White	28" x 28"
101192	White	30" x 30"
101195	White	33" x 33"
101195-5	White	33-1/2" x 33-1/2"
101196	White	34" x 34"
101196-5	White	34-1/2" x 34-1/2"
101198	White	36" x 36"
101198-3	White	36-3/8" x 36-3/8"

Item#	Color	Size (A x B)
101199	White	37" x 37"
101202	White	39" x 39"
101202-5	White	39-1/2" x 39-1/2"
101203-1	White	41" x 41"
101203-1-6	White	41-5/8" x 41-5/8"
101203-1-8	White	41-7/8" x 41-7/8"
101204	White	42" x 42"
101204-5	White	42-1/2" x 42-1/2"
101205	White	44" x 44"
101207	White	48" x 48"
101208-1-0	White	51" x 51"
101208-1-1	White	51-1/8" x 51-1/8"
101209-1-8	White	53-7/8" x 53-7/8"
101210-4	White	54" x 54"
101210-1	White	54-1/8" x 54-1/8"
101210	Black	54-1/8" x 54-1/8"
10211-1	White	55" x 56-1/2"
10211-2	White	55-1/8" x 56-3/4"
101212	White	58" x 58"

Insulated Shutter Covers

- AIC36 41-7/8" X 41-7/8" cover For 36" Fan
- AIC48 53-7/8" X 53-7/8" cover For 48" Fan



Clip Retainer Shutter

- HSH020 Clip Retainer Shutter



24" Transition Hood with FasLock

The FasLock slide kit mounts to the poly transition and securely attaches the fan to the face of the hood.

- Constructed of UV resistant polypropylene.
- Bottom opening 31" x 33"
- Face opening 39" x 39"



Stainless Steel Slide Bar holds top flange securely in place.



Remove the slide bar and tip fan forward for maintenance or cleaning.

#628062PA 24" Poly Transition
 #HSFLT-24A FasLock Mounting Kit



Hog Fan Guards

Item#	Guard (Part)	Painted Guard	Galvanized Guard
AS-24EDDLP	N/A	8100410100	8100410200
AS-36EDDLP	N/A	8100110100	8100110200
AS-54EBDLP	Panel	8100280100	8100280200
	(2) Wall Brackets	2020760100	2020760200
	(2) Gate Rods	2020100100	2020100200
AS-57EBDBP	Panel	8100470100	8100470200
	(2) Wall Brackets	2020760100	2020760200
	(2) Gate Rods	2020100100	2020100200

Stainless Steel Pit Transition

Pit transition for 24" fan mounts on pit sidewall over suggested concrete opening of 43" x 19". Reduces trash buildup in fan housing and allows use of discharge cone to increase fan delivery. Ships assembled.



#7990240500 Stainless Steel Pit Transition



Pit Pump-out Cover

- Phenolic plastic impregnated 3/4" Finland birch plywood
- Superior product
- Non-warping



#84400 5' x 6' pit cover



Fiberglass Transition

#628062 30" x 38" x 39"

Wind Diverter

Wind diverter mounts on fan discharge to prevent strong winds from reducing CFM output. Fiberglass construction with stainless steel mounting arms. Fits most fans.



#HSWD-14 14"
 #HSWD-18 18"
 #HSWD-24 24"
 #HSWD-36 36"



Fan Cover

Constructed of durable, 6 oz. poly curtain material. The Fan Cover seals ventilation fans to reduce energy loss. White exterior with black exterior to limit light transmission. Secures around fan cone with adjustable shock cord and azimuth nut. Available in sizes 23" through 72"

#FANCVR62BWX 62" Round
 #FANCVR64BWX 64" Round
 #FANCVR66BWX 66" Round
 #FANCVR68BWX 68" Round



Fan Cap

Manufactured from a durable, lightweight ripstop material. The Fan Cap seals ventilation fans to limit energy losses. An elastic strap holds the cap securely in place. When the fan powers up, the cap blows off to prevent damage. Stores easily in a small container when not in use.

#ISFC48 36" - 52"
 #ISFC54 54" and larger



Replacement Fan Motors for GrowerSELECT Air Storm and Airstream Performer Fans

- Removable plastic motor cap protects internal capacitor and provides access to wiring terminals.
- Water slinger protects moisture from being forced past the double bearings while fan is operating.
- Full 56 Frame motors with 5/8" interior shaft and double sealed ball bearings.
- You don't have to sacrifice performance to save money!

Item#	Hp	RPM	Voltage	*AP OEM Part #	Fan Size
#HS9028KIT†	1/6	3300	115/230	15-0145	8" & 10"
#HS9007	1/4	1725	115/230	15-0109	14"
#HS9008	1/3	1725	115/230	15-0110	18"
#HS9006A	1/3	1075	115/230	15-0105	24"
#HS9009A	1/2	850	115/230	15-0116	36"

†Single Speed • *Use of Original Equipment Manufacturer part numbers is for reference only.



Replacement Motors for Munters / Aerotech Fans

Item#	Hp	RPM	Voltage	*Aerotech OEM #	Fan Size
#HS9031†	1/6	3250	120/240	FM1038	9"
#HS9003	1/8	1625	120/240	FM1010	14"
#HS9002	1/3	1625	120/240	FM1009	18"
#HS9001	1/3	1075	120/240	FM1008	24"

†Single Speed • *Use of Original Equipment Manufacturer part numbers is for reference only.



Single Speed Fan Motors

- TEAO motors
- Permanently lubricated ball bearing
- Dual start/run capacitors • 5/8" Shaft
- Auto Overload

Item#	RPM	Hp	Frame	Voltage	Amps	Use
#HS9005A	850	1/2	48	115/230	6.6/3.3	Direct Drive, 36"
#HS9015A	1725	1/2	56	115/208-230	5.3/2.6-2.6	Belt Drive, 36"
#HS9010	1725	1	56	115/208-230	11.2/6.0-5.6	Belt Drive, 48"-50"
#HS9000	1725	1	56	115/208-230	8.6/4.9/4.3	Belt Drive, 48"-50" (High S.F. 1.4 Motor**)
#HS9019	1725	1-1/2	56	208-230	6.7-6.2	Belt Drive, 52"-54"
#HS9014C	1725	1-1/2	56	115/208-230	10.8/5.4	Belt Drive, 52"-54" (High S.F. 1.5 Motor**)

**SF = Service Factor.

GroBelt

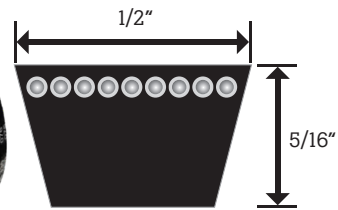
DRIVE BELTS HOGSLAT

- Built of WEAR RESISTANT high modulus compression rubber.
- Embedded with LOW STRETCH polyester fiber cable cords.
- Neoprene outer ply to PREVENT SLIPPAGE.



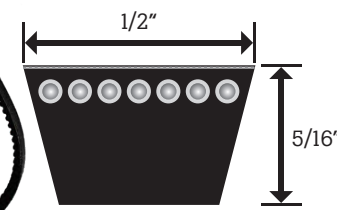
Type A Belt

Length inside plus 2" = outside
Ex. HSA40- 40" inside, 42" outside



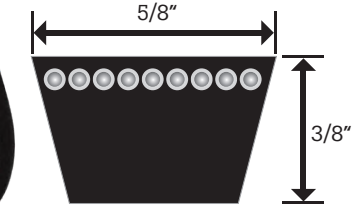
Type AX Cogged Belt

Length inside plus 2" = outside
Ex. HSX40- 40" inside, 42" outside



Type B Belt

Length inside plus 3" = outside
Ex. HSB40- 40" inside, 43" outside



Type A Belt

#HSA20	1/2" x 22" Standard
#HSA21	1/2" x 23" Standard
#HSA23	1/2" x 25" Standard
#HSA24	1/2" x 26" Standard
#HSA26	1/2" x 26" Standard
#HSA28	1/2" x 30" Standard
#HSA29	1/2" x 31" Standard
#HSA30	1/2" x 32" Standard
#HSA31	1/2" x 33" Standard
#HSA32	1/2" x 34" Standard
#HSA33	1/2" x 35" Standard
#HSA34	1/2" x 36" Standard
#HSA35	1/2" x 37" Standard
#HSA36	1/2" x 38" Standard
#HSA37	1/2" x 39" Standard
#HSA38	1/2" x 40" Standard
#HSA39	1/2" x 41" Standard
#HSA41	1/2" x 43" Standard
#HSA42	1/2" x 44" Standard

Type A Belt

#HSA43	1/2" x 45" Standard
#HSA44	1/2" x 46" Standard
#HSA45	1/2" x 47" Standard
#HSA46	1/2" x 48" Standard
#HSA47K	1/2" x 49" Kevlar
#HSA48	1/2" x 50" Standard
#HSA49	1/2" x 51" Standard
#HSA51	1/2" x 53" Standard
#HSA53	1/2" x 55" Standard
#HSA54K	1/2" x 56" Kevlar
#HSA55	1/2" x 57" Standard
#HSA56	1/2" x 58" Standard
#HSA57	1/2" x 59" Standard
#HSA58	1/2" x 60" Standard
#HSA59	1/2" x 61" Standard
#HSA61	1/2" x 63" Standard
#HSA65	1/2" x 67" Standard
#HSA71	1/2" x 73" Standard
#HSA73	1/2" x 75" Standard

Type A Belt

#HSA75	1/2" x 77" Standard
#HSA88	1/2" x 90" Standard

Type Ax cogged Belt

#HSAX31	1/2" x 33" Cogged
#HSAX38	1/2" x 40" Cogged
#HSAX39	1/2" x 41" Cogged
#HSAX43	1/2" x 45" Cogged
#HSAX46	1/2" x 48" Cogged
#HSAX56	1/2" x 58" Cogged
#HSAX59	1/2" x 61" Cogged
#HSAX60	1/2" x 62" Cogged
#HSAX64	1/2" x 66" Cogged

Type B Belt

#HSB35	5/8" x 38" Standard
#HSB38	5/8" x 41" Standard



POWERWIST® Drive V-Belts

You'll always have the right size replacement belt on hand with the POWERWIST V-Belts. Simply remove a link and adjust the size to fit. Constructed of polyurethane elastomers reinforced with polyester fabric. POWERWIST belts will out perform conventional rubber belts in harsh conditions.

#AFH2053	1/2" belt, ft.
#AFH2053-5	5' length
#AFH2053-25	25' length



Accu-Link® Adjustable Link V-Belts

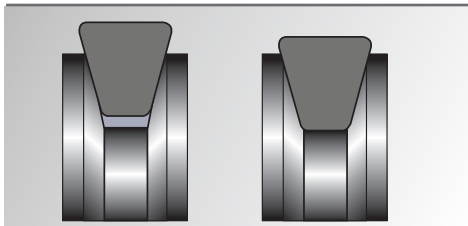
Accu_Link® snap-twist-assembly, requiring no tools, means quick replacement of any existing fan belt. Accu-Link belts are constructed from strong polyester fabric with a durable urethane coating.

#52682	1/2" belt, ft.
#52682-5	5' length
#52682-25	25' length



Worn fan belts can decrease air delivery by as much as 20%

Fans belts don't stretch, they wear. Belts become thinner as their sides rub against the fan pulleys. As they get thinner the belts ride lower in the pulley grooves causing the fan blades to rotate slower. The slower the blade rotates, the less air it moves. It is not uncommon for slippage caused by worn fan belts to decrease air delivery by as much as



Worn v-belts ride lower in the pulley grooves causing the fan blades to rotate slower.

20%. CFM delivery is directly proportional to the fan speed. Spin a fan 20% slower, and it moves 20% less air.

Think of what this reduction means in a

house with 12 fans rated at 324,000 cfm with a designed airspeed of 600 fpm. Worn belts could reduce cfm by 20% or down to 259,200 cfm. This turn would lower the airspeed to only 480 fpm; severely decreasing the amount of wind chill felt by the animals or birds during hot weather.

Plan to replace fan belts every year. Keep in mind although automatic belt tensioners reduce the amount of slippage causing the belts to wear slower, they do not eliminate the need for annual replacement. Same for link style belts; the biggest benefit of link belts is how easy it is to have the right size belt on hand. Link belts still wear over time and should be replaced annually just like conventional belts.

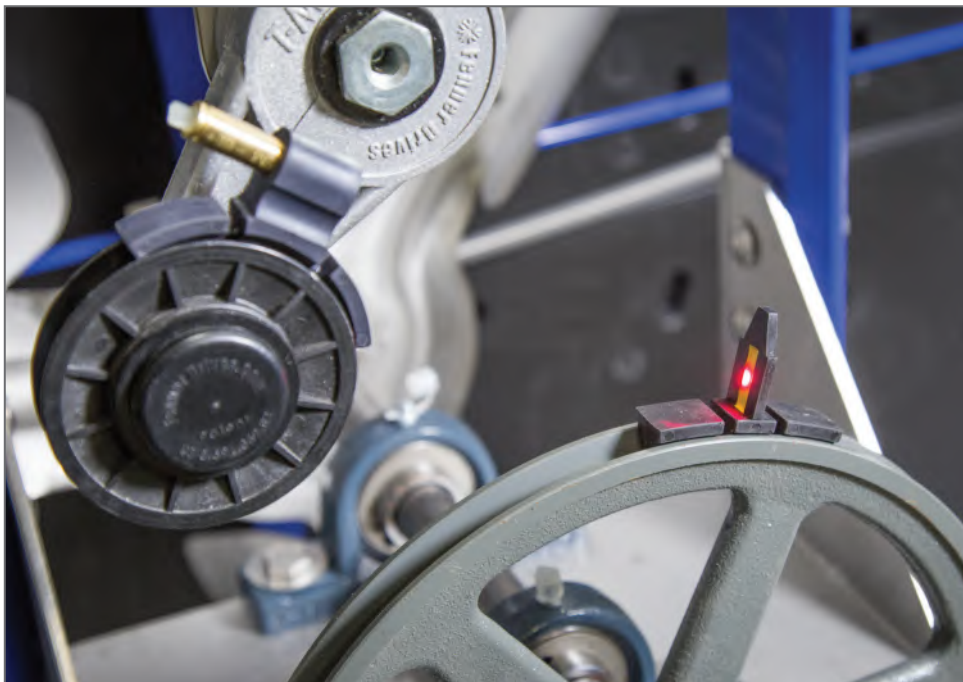
The second item in the fan drive system requiring attention is the pulleys themselves. Over time pulleys also wear changing from a V shape to a rounded profile. This wear is easily checked when installing a new belt. If the new belt does not ride high on the



Worn pulleys have U-shaped grooves instead of a sharp V shape.

pulley but instead slips down into the pulley groove then is time to replace the pulley. Pulleys typically need replacing about every four years.

One of the best tools available when changing or even just checking pulley alignment is a new product called the Laser Fan Pulley Alignment Kit. This inexpensive device uses a laser pointer to ensure fan pulleys are in perfect alignment. It's easy to use, just place the laser pointer in one of the pulley grooves and adjust the target pulley on the shaft until it lines up. Not only can the kit be used when installing new pulleys, but also when changing fan belts to be sure the pulleys have not shifted over time.



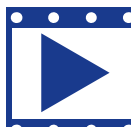
The Laser Kit is easy to use, just place the laser pointer in one of the pulley grooves and adjust the target pulley on the shaft until it lines up.



Laser Fan Pulley Alignment Kit

Two-piece kit packaged in plastic storage case. Target piece also contains a pulley groove gauge to quickly check pulley wear

#HS783..... Laser Fan Pulley Alignment Kit



Watch the demo video

Go to YouTube
Search: Hog Slat – Pulley Laser